



Legend

-  Picnic Shelter
-  Play Equipment
-  Pathway
-  Open Shelter
-  Nature Trail
-  Signage

Benton Hill Park
615 W. Benton St.

Acquired 1977–1999; 3.5 acres

Item	Type	Qty	Cond.	Note	ADA?
Play Equipment	Recreation	1	Good	2005	NA no accessible route
Nature Trail	Recreation	1		2005	
Pathway	Destination	1	Good	2005	NA slope varies 12% to 19% without handrails
Picnic Shelter	Destination	1	Fair	2005; 18'x18'; needs new stain coat	
Open Shelter	Destination	1	Good	2005	overlooks barn foundations
Sign		1		2005; installed by Iowa City Public Art (\$31k)	

Notes

Playground

Maintenance: Remove and replace existing engineered wood fiber. Provide rubberized surface at points of structure access.

PARK INVENTORY: BENTON HILL PARK



Play equipment – lacks accessible route (due to pathway)



Play equipment – lacks safety surface



Nature trail



Pathway – steep slope and lacks handrails



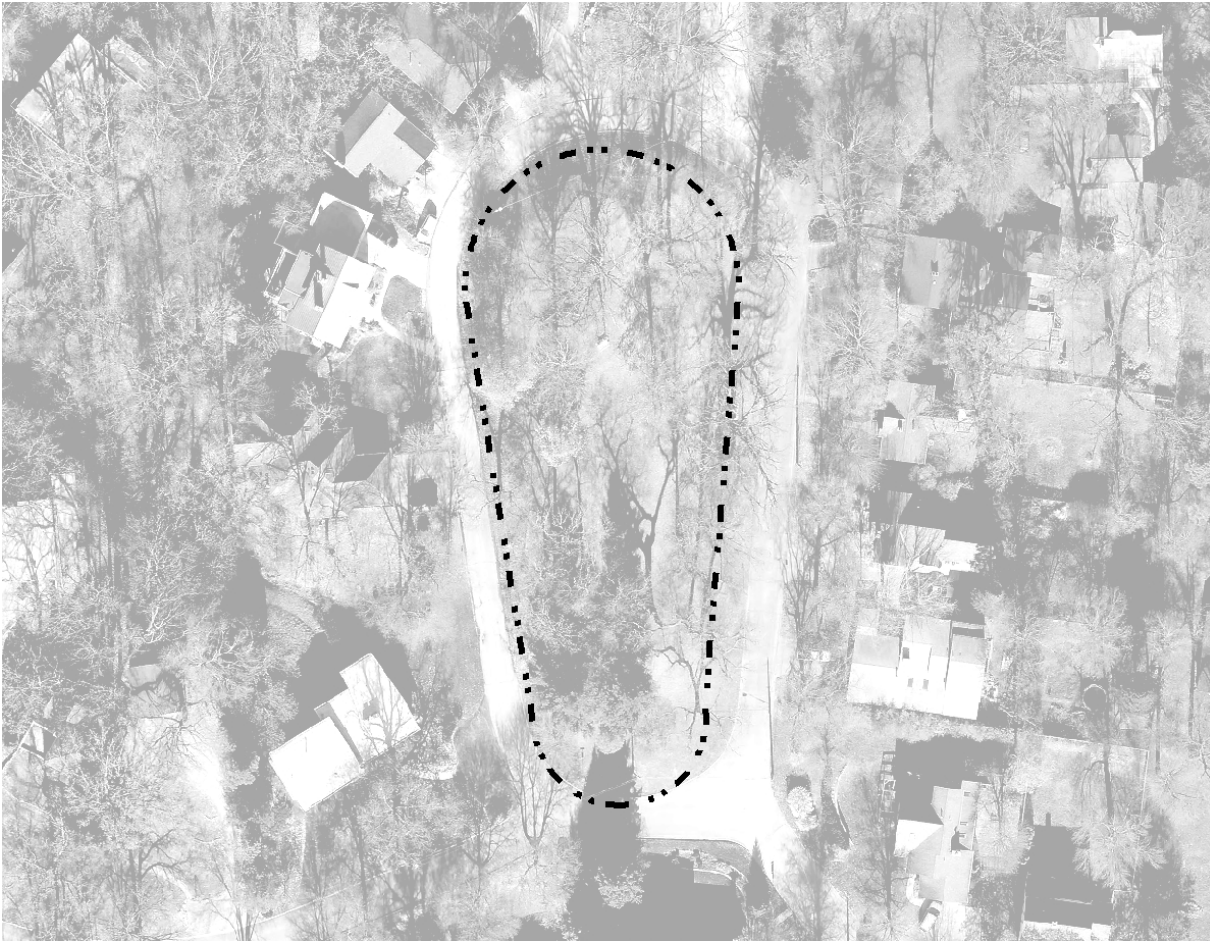
Picnic shelter – needs new stain coat



Open shelter



Legend



Black Springs Circle Park
1100 Dill St.

Acquired 1909; 0.9 acres

Notes:

Curb Access at Street

Development: Coordinate with Iowa City Curb Access Program (no truncated domes)

PARK INVENTORY: BLACK SPRINGS CIRCLE PARK



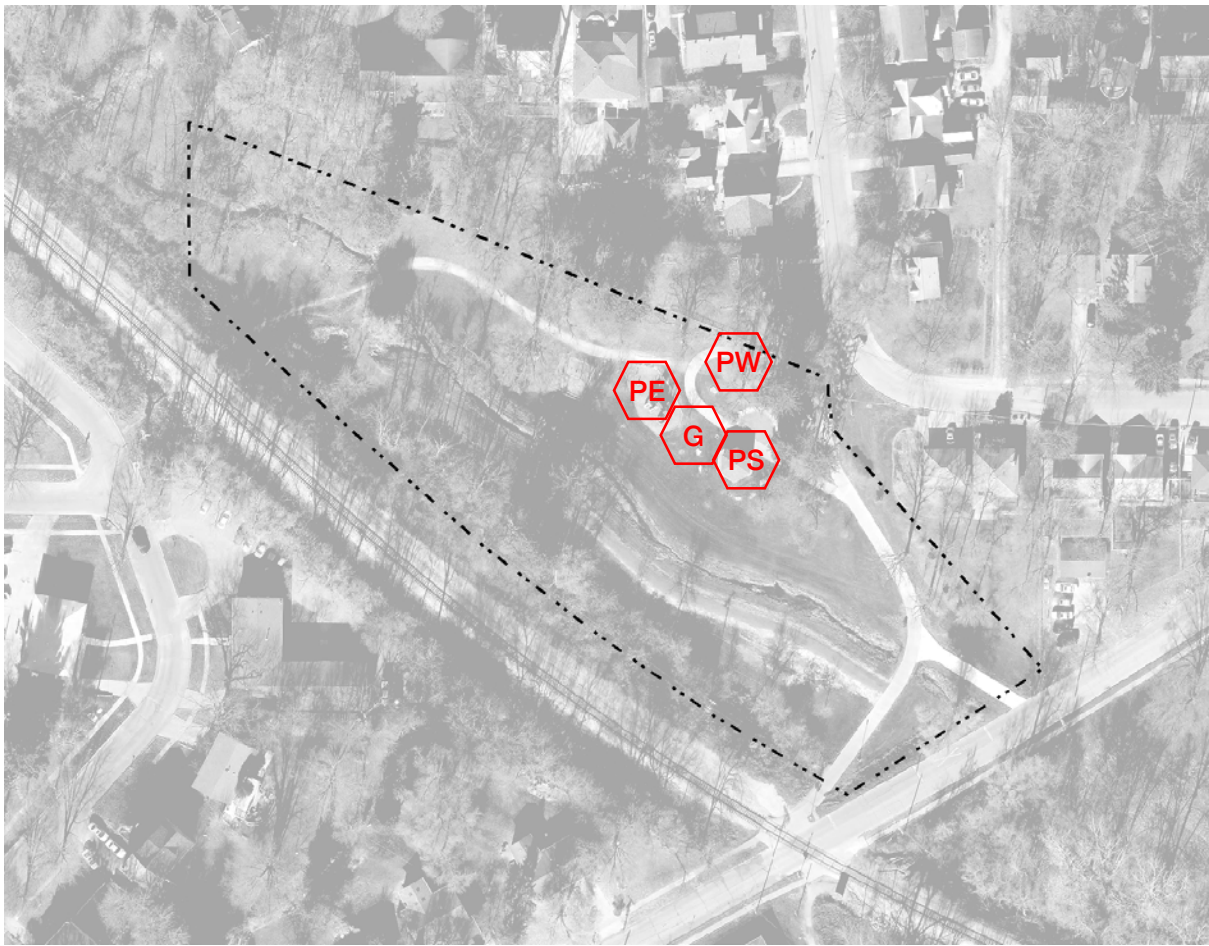
No accessible route



No accessible route



No accessible routes to benches & picnic table



Legend

- Picnic Shelter
- Play Equipment
- Pathway
- Grill

Brookland Park
550 Greenwood Dr.

Acquired 1924; 3.8 acres

Item	Type	Qty	Cond.	Note	ADA?
Play Equipment	Recreation	1	Good	2006	NA no accessible route & condition of resilient surfacing
Pathway	Recreation	3	Good	2006	NA slope varies 14% to 19% without handrails
Picnic Shelter	Destination	1	Good	2006; 20'x24'	NA no accessible route
Grill	Destination	1	Fair		NA no accessible route

Notes

Playground

Maintenance: Remove and replace existing engineered wood fiber. Provide rubberized surface at points of structure access.

PARK INVENTORY: BROOKLAND PARK



Play equipment – lacks accessible route



Play equipment – condition of safety surface



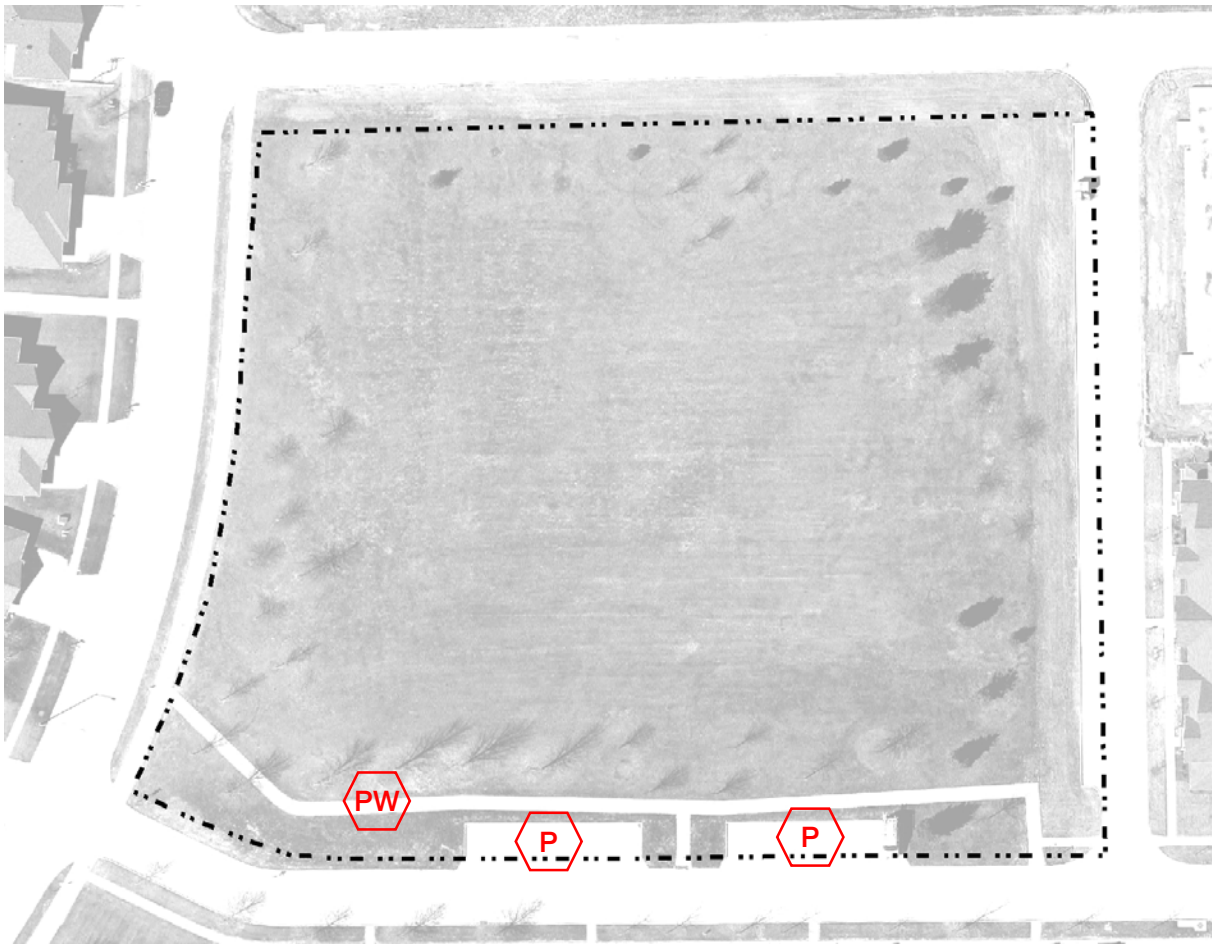
Pathway – steep slope and lacks handrails



Pathway – steep slope



Picnic shelter – lacks accessible route



-  Parking Lot
-  Pathway

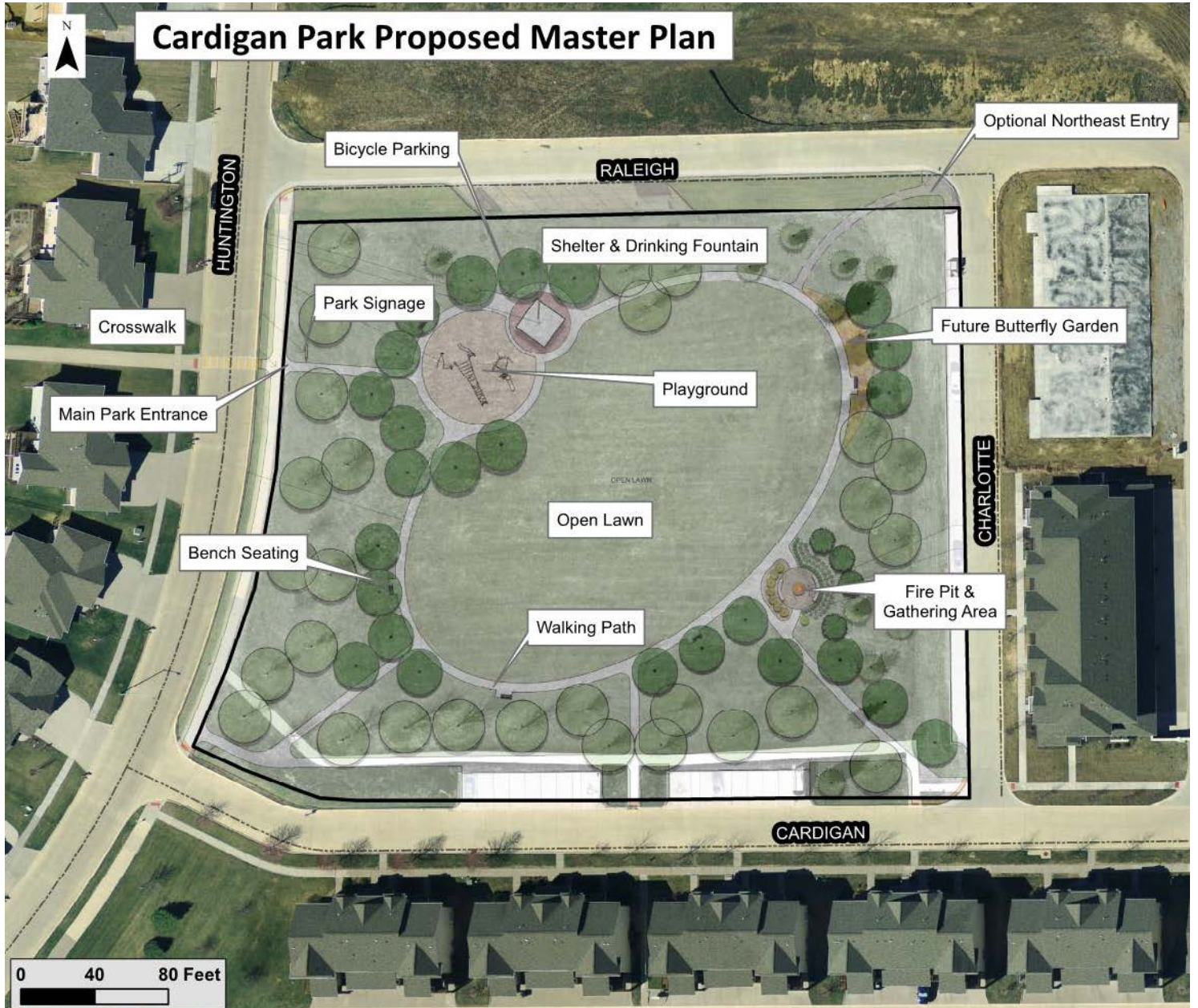
Cardigan Park
500 Huntington Drive

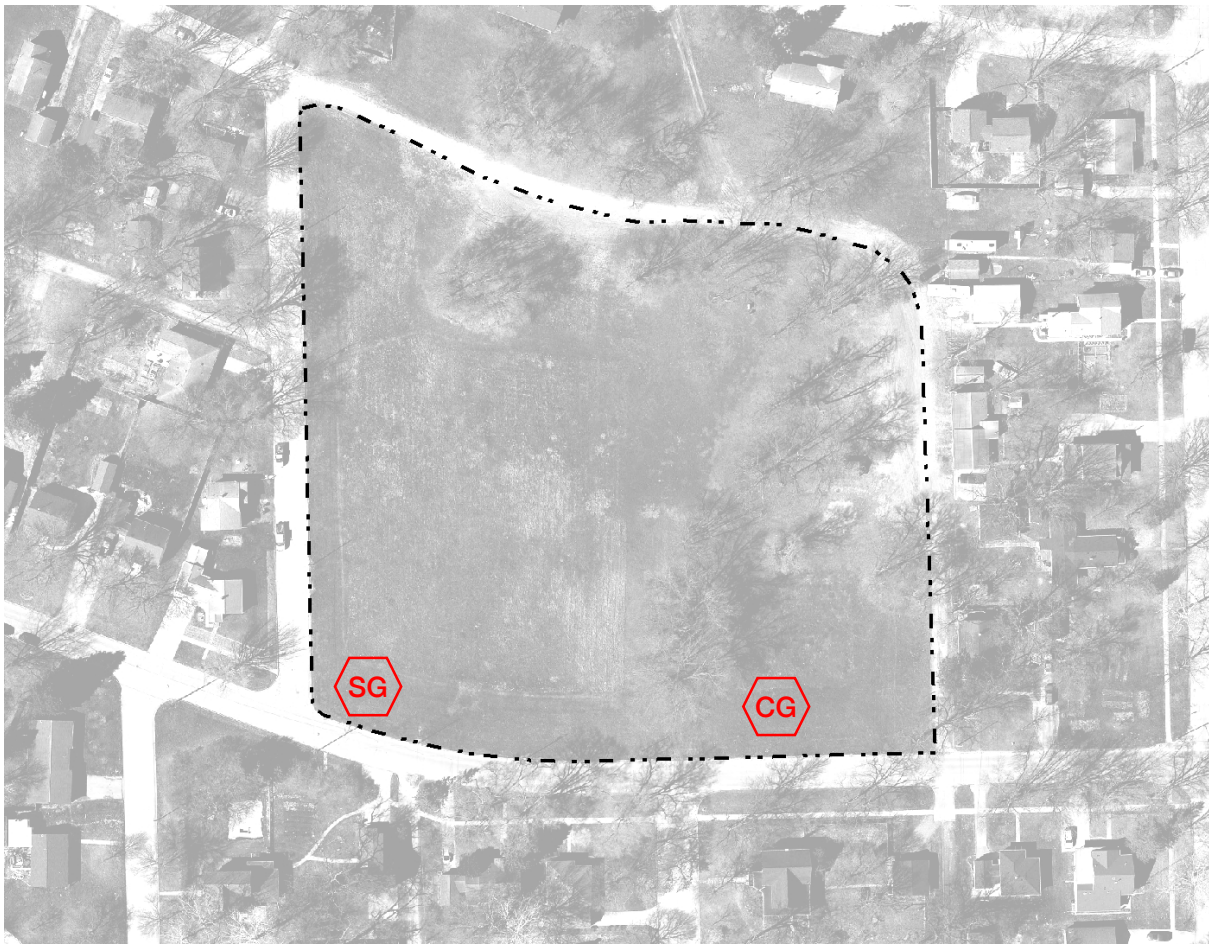
Acquired 2015; ~3.0 acres

Additional Facilities History:

- 2017 Playground developed
- 2018 Trails and shelter anticipated

PARK INVENTORY: CARDIGAN PARK





Signage



Community Garden

Chadec Green Park
1920 Friendship St.

Acquired 2014

Item	Type	Qty	Cond.	Note	ADA?
Community Garden Plots		1	Cond.		NA no accessible route
Modern Signage		1	Good		

Notes:

Curb Access at Street

Development: Coordinate with Iowa City Curb Access Program (no truncated domes)

PARK INVENTORY: CHADEK GREEN PARK



No accessible routes to open lawn



No accessible routes from street



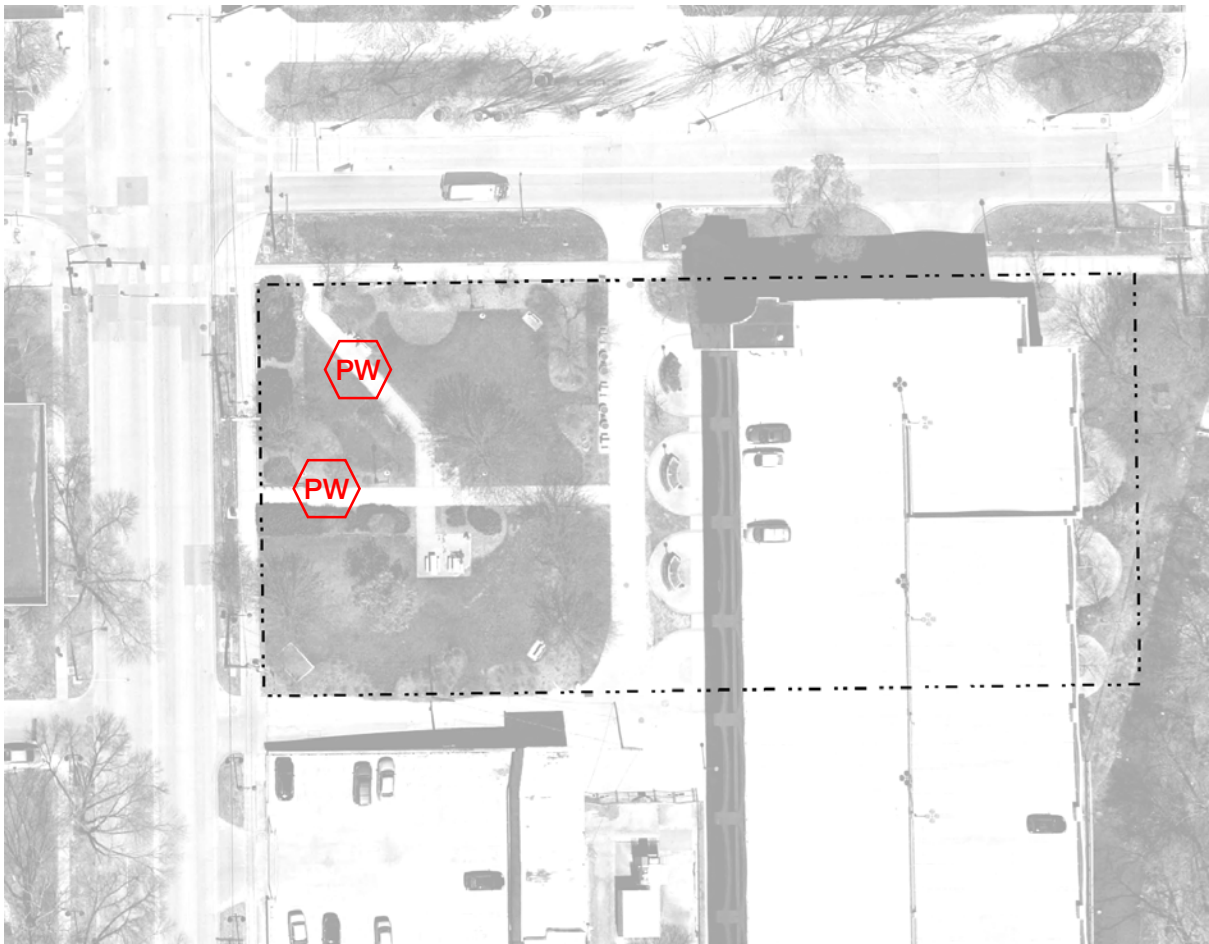
No accessible routes to open lawn



No accessible routes to open lawn



Legend



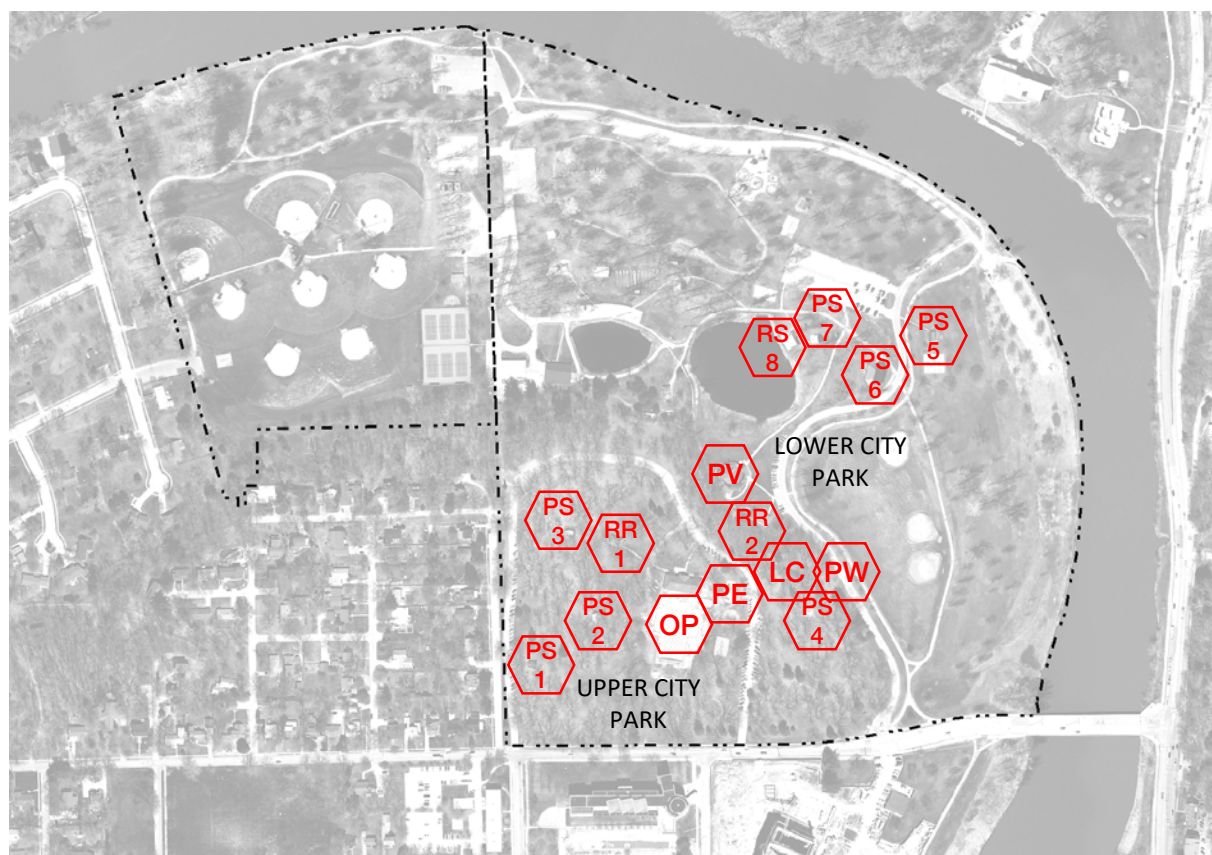
Chauncey Swan Park*
405 E. Washington St.

Acquired 1994; 0.4 acres

Item	Type	Qty	Cond.	Note	ADA?
Pathway	Recreation	1	Good		YES Accessible Route to Benches

Additional Facilities History:

2017–2018 Park redeveloped



Legend

- PS Picnic Shelter
- PW Pathway
- RR Restroom
- RS Reserved Shelter
- OP Outdoor Pool
- LC Learning Center
- PV Pavillion (100+ capacity)
- PE Play Equipment

City Park* 200 E. Park Rd.

Acquired 1906, 1942, 1959; 107.3. acres

Item	Type	Qty	Cond.	Note	ADA?	
Outdoor Pool	Recreation	1	Good	1930s pool + 1948 bath house + 1990s remodel	NA	Not reviewed (covered in a separate ADA assessment)
Pathway	Recreation	1	Poor	Stairs—upper to lower park	NA	too steep; lacks 2nd handrail
Picnic Shelter	Destination	1	Fair	Shelter #1	NA	lacks handicapped picnic tables
Picnic Shelter	Destination	1	Fair	Shelter #2	NA	lacks handicapped picnic tables; concrete pad in poor shape; asphalt ramp too steep
Picnic Shelter	Destination	1	Fair	Shelter #3	NA	lacks handicapped picnic tables; uneven surface adjacent to concrete pad
Picnic Shelter	Destination	1	Fair	Shelter #4	NA	no accessible route; steps in concrete; drinking fountain not accessible
Picnic Shelter	Destination	1	Fair	Shelter #5	NA	lacks accessible picnic tables
Picnic Shelter	Destination	1	Good	Shelter #6 built 2013		
Picnic Shelter	Destination	1	Fair	Shelter #7	NA	lacks accessible picnic tables
Reserved Shelter	Destination	1	Fair	Shelter #8 built 2010		
Pavilion	Destination	1	Fair	Shakespeare theater	NA	lacks accessible restrooms inside, lacks compliant grab bars
Restroom	Destination	1	Fair	#1, 1985; needs painting		
Restroom	Destination	1	Good	#2, 1992		
Learning Center	Destination	2	Poor	1913–18 replica log cabins		Note: repairs and restorations scheduled for 2017–2018
Play Equipment	Recreation	3	Fair/ Poor	(See note below)	NA	no accessible route & condition of safety surface

Play Equipment: three independent play areas (swing and two structures)

Development: Provide accessible route from adjacent sidewalks

Correct height differential with wooden curb barrier by removing and replacing or shaving flush.

Maintenance: Remove and replace existing surface with engineered wood fiber. At points of structure access, place rubberized surface

Additional Facilities History:

1998 Lower City Park playground
 1993, 2004 Baseball fields rebuilt
 1995 Basketball court
 2005 Lower City Park paving

1999 Carousel, airplane, train
 2002 Ferris wheel and whale ride
 2000 Field 2 fence
 2007 Shakespeare pavilion
 2000 Riverside theater

2002 Riverside theater seating
 2001 Gazebo
 1967 Maintenance building built
 2011 Maintenance building renovated
 2003, 2013 Shelter

PARK INVENTORY: CITY PARK



Outdoor pool – not reviewed



Pathway – stairs are too steep and lack handrail, poor cond.



Picnic shelter – lacks ADA seating



Picnic shelter – concrete in poor shape



Picnic shelter – uneven surface



Picnic shelter – drinking fountain is not accessible

PARK INVENTORY: CITY PARK



Picnic shelter – reserved shelter



Pavilion – lacks accessible restrooms



Restroom – needs painting



Restroom



Learning center – replica log cabins in poor shape



Play Equipment (1/3)

PARK INVENTORY: CITY PARK



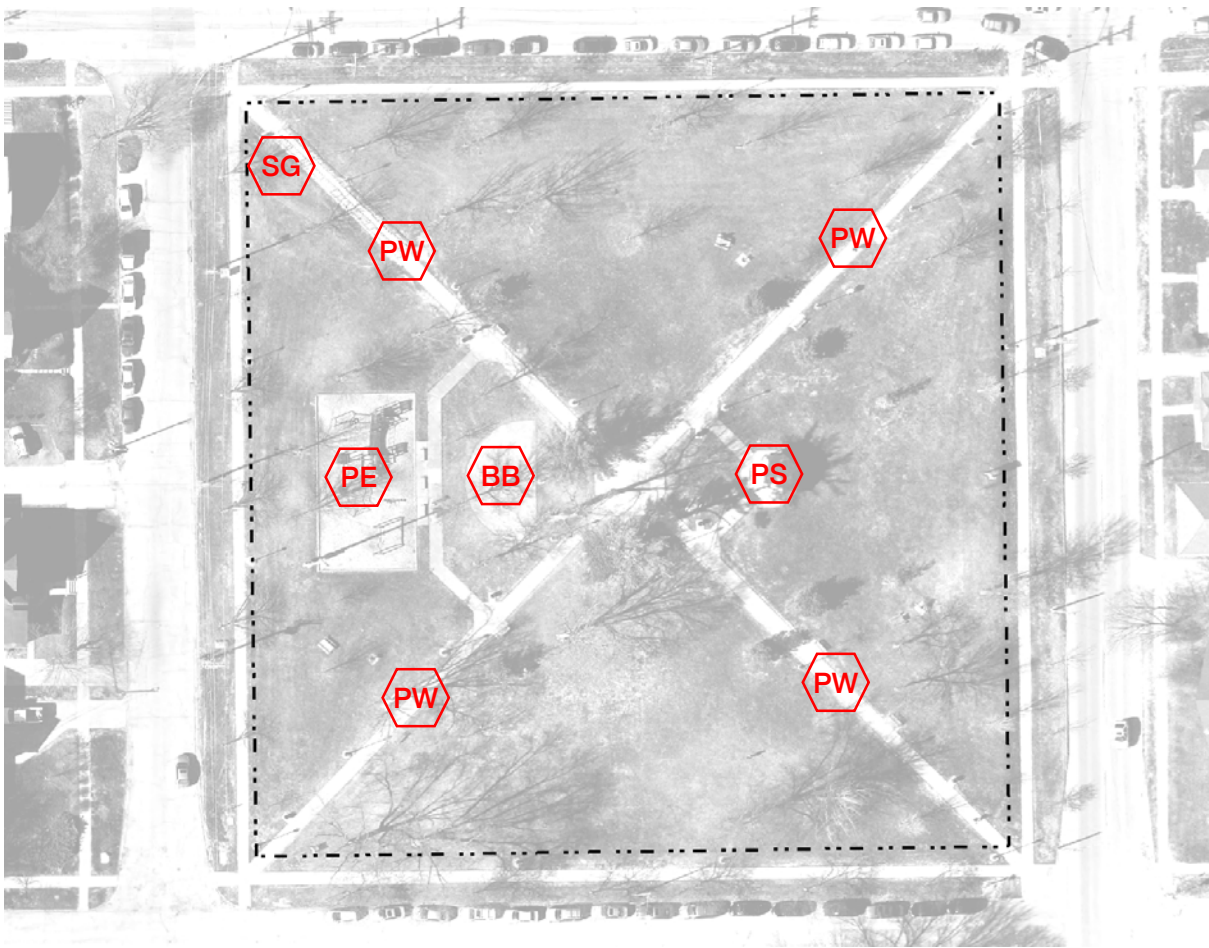
Play Equipment (2/3)



Play Equipment (3/3)



Play Equipment (all 3)



Legend

- Pathway
- Picnic Shelter
- Play Equipment
- Basketball Court
- Signage

College Green Park
600 College St.

Acquired 1839; 2.4 acres

Item	Type	Qty	Cond.	Note	ADA?
Play Equipment	Recreation	1	Good	1993; Edging and Surface Require Upgrade	NA access route impacted by wooden edge and condition of resilient surfacing
Stairs	Recreation		Fair	Rails need painting	
Pathway	Recreation		Good	Fair to mostly Good conditions	YES grass growing in joints
Picnic Shelter (Gazebo)	Destination	1	Fair	Shelter #1	YES lacks handicapped picnic tables
Basketball Court	Sports Facilities	1	Good	Fair to mostly Good conditions	NA no accessible route to it
Park Sign	Wayfinding	1	Fair	Wood Structure	Park – Undeveloped

Notes:

Playground

Development: Correct height differential with wooden curb barrier by removing and replacing or shaving flush.
 Maintenance: Remove and replace existing engineered wood fiber. At points of structure access, place rubberized surface

Basketball Court

Development: Provide paved pathway to basketball court

Curb Access at Street

Development: Coordinate with Iowa City Curb Access Program (no truncated domes)

2012 Lights installed

PARK INVENTORY: COLLEGE GREEN PARK



Accessible curb cut, no truncated domes



Accessible route at south end of park



Pathways – Sidewalks requires minimal maintenance



Playground – no accessible route – wood curb prohibits access



Playground – no accessible route – wood curb prohibits access



Playground – resilient surface – needs replaced

PARK INVENTORY: COLLEGE GREEN PARK



No accessible routes to basketball court



Accessible routes through park



Accessible routes to drinking fountain



Accessible routes to benches



Accessible routes – curb cuts – no truncated domes



Legend

- PS Picnic Shelter
- PE Play Equipment
- RR Restroom
- BB Basketball Court
- SF Softball Field

Court Hill Park
2825 Friendship St.

Acquired 1959, 1971; 8.6 acres

Item	Type	Qty	Cond.	Note	ADA?
Play Equipment	Recreation	1	Good	1994	no accessible route & condition of safety surface
Picnic Shelter	Destination	1	Poor		lacks handicapped-accessible tables
Picnic Shelter	Destination	1	Poor		lacks handicapped-accessible tables
Restroom	Destination	1	Good	2012	
Basketball Court	Sports Facilities	1	Poor		no accessible route to it
Softball Field	Sports Facilities	1	Fair		

Notes:

Playground

Maintenance: Remove and replace existing engineered wood fiber. Provide rubberized surface at points of structure access.

1993 Pedestrian bridge

2003, 2010 Trail

PARK INVENTORY: COURT HILL PARK



Play equipment – lacks accessible route



Play equipment – lacks safety surface



Picnic shelter – lacks accessible route



Picnic shelter – lacks accessible route



Restroom



Basketball court – lacks accessible route

PARK INVENTORY: COURT HILL PARK

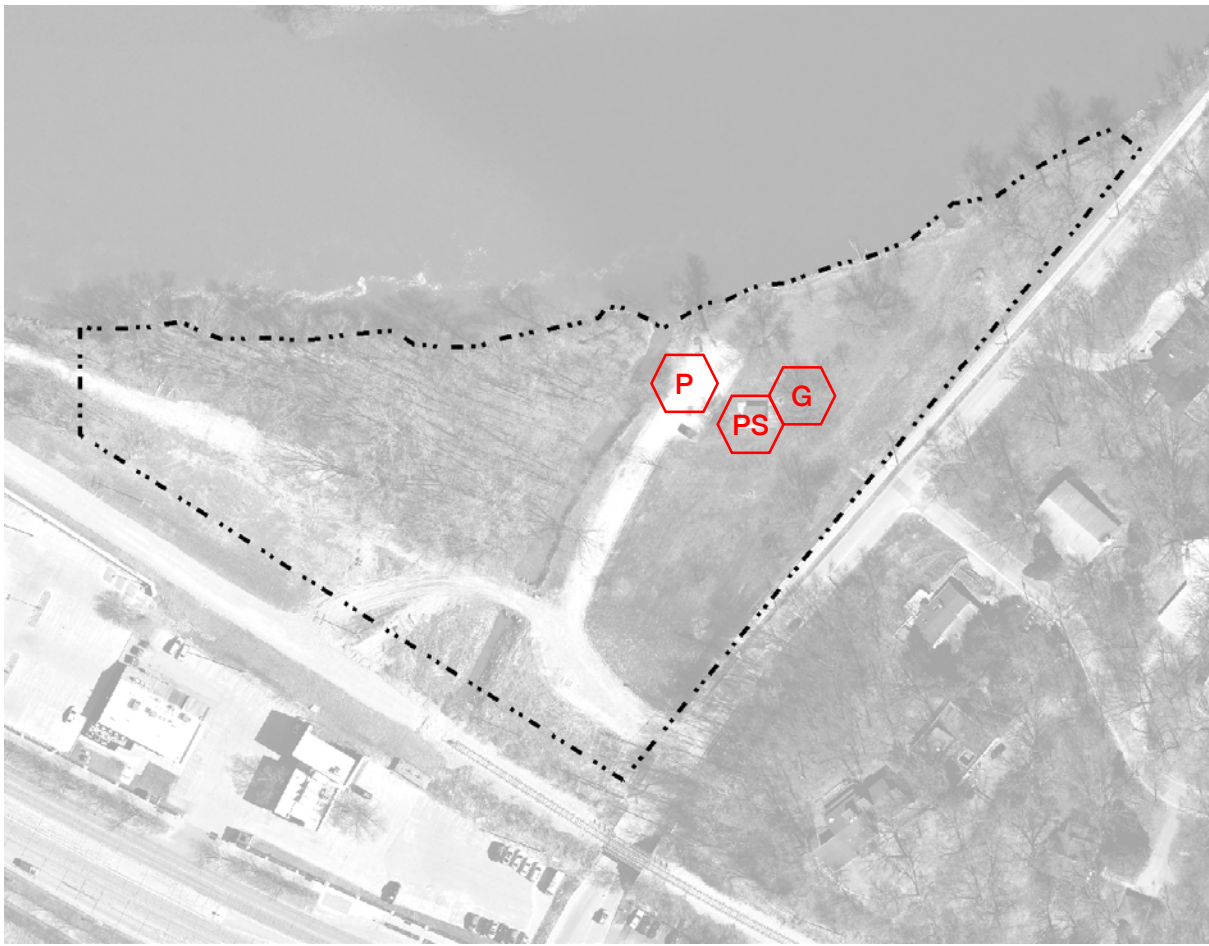


Softball field



Legend

-  Picnic Shelter
-  Parking
-  Grill



Crandic Park
51 Rocky Shore Dr.

Acquired 1967, 2015; 5.2 acres

Item	Type	Qty	Cond.	Note	ADA?
Picnic Shelter	Destination	1	Fair	12'x14'	NA no accessible route; lacks accessible tables
Parking	Utility	1	Fair		NA lacks van size passenger loading zone
Grill	Destination	1	Fair		NA accessible from shelter; not from parking

PARK INVENTORY: CRANDIC PARK



Picnic shelter– lacks accessible route



Picnic shelter – lacks accessible tables



Parking – lacks van size accessible loading zone



Legend

-  Pathway
-  Picnic Shelter
-  Play Equipment
-  Basketball Court
-  Baseball Field
-  Signage

Creekside Park
1858 7th Avenue Court

Acquired 1951, 2015; 2.3 acres

Item	Type	Qty	Cond.	Note	ADA?	
Picnic Shelter	Destination	1	Poor	20'x45' Scheduled to be removed	NA	Scheduled to be removed
Play Equipment	Recreation	1	Poor	Need for replacement	NA	no hard surface accessible route, edge treatment impacted by wooden edge and condition of resilient surfacing
Basketball Court	Sports Facilities	1	Poor	Scheduled to be removed	NA	Scheduled to be removed
Baseball Field	Sports Facilities	1	Fair	Backstop with no skinned infield		There is an adjacent trail
Trail Bridge	Recreation	1	Fair	1996 Scheduled to be removed		Scheduled to be removed (to be confirmed)
Park Sign	Wayfinding	1	Good	Modern Style		
Grills	Destination	2	Fair		NA	Replace with redevelopment

Notes:

Playground

Development: Park planned to be redeveloped in 2018 (see next page).

Curb Access at Street

Development: Coordinate with Iowa City Curb Access Program

PARK INVENTORY: MASTER PLAN - CREEKSIDE PARK



PARK INVENTORY: CREEKSIDE PARK



Shelter – scheduled to be replaced



Pathways – system will be impacted by park plan



Playground – entire playground should be scheduled for upgrade



Playground – entire playground should be scheduled for upgrade



Lawn – accessible by trail



Trail – provides good internal access

PARK INVENTORY: CREEKSIDE PARK



New Addition



Pathways – sidewalks provide good perimeter access



Bridge – currently being evaluated by City



Pathways – connection to trail system

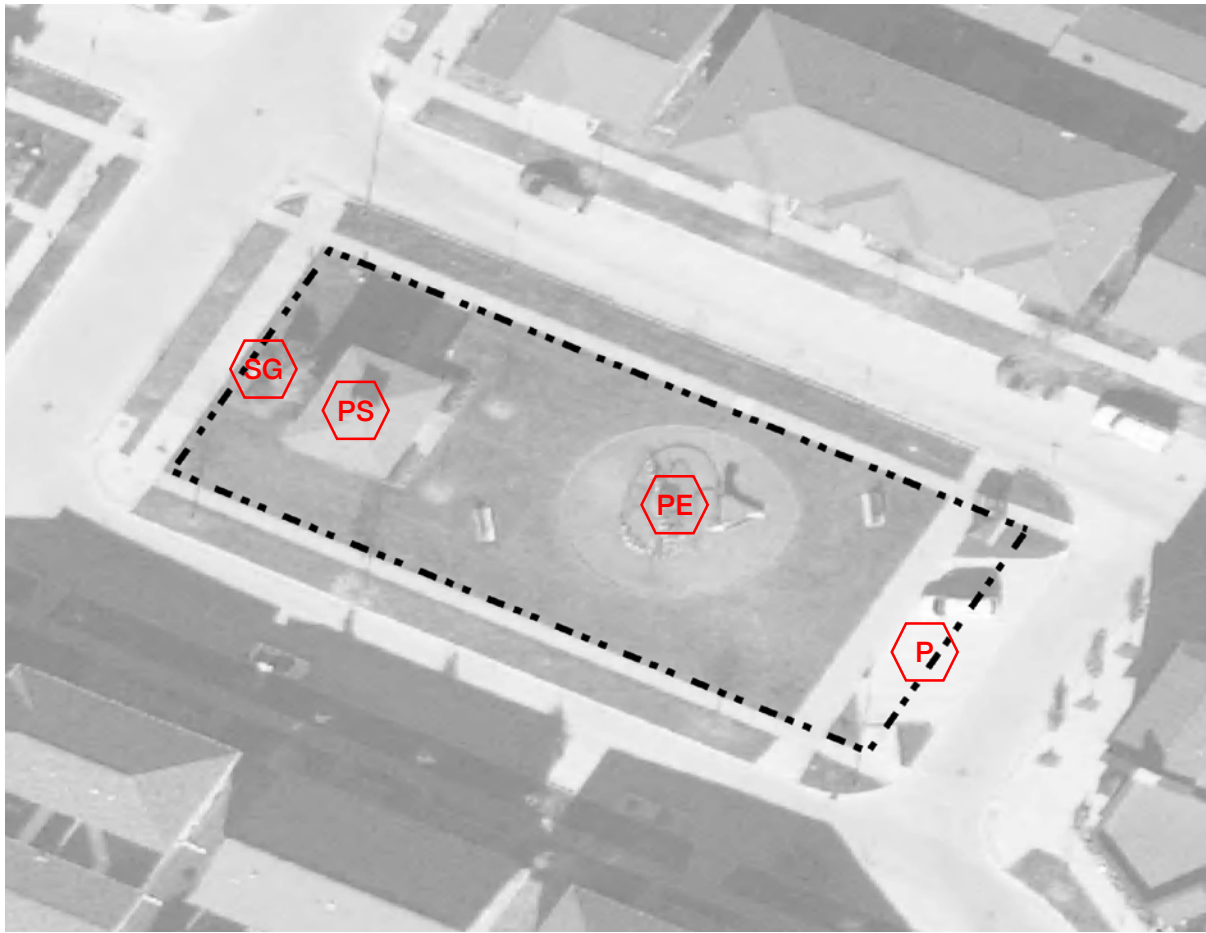


Creek Access – opportunity for creek access



Creek Access – opportunity for creek access

PARK INVENTORY: EMMA HARVAT SQUARE



-  Picnic Shelter
-  Play Equipment
-  Parking
-  Signage

Emma Harvat Square

Developed 2015

Item	Type	Qty	Cond.	Note	ADA?
Picnic Shelter	Destination	1	Good	stain	YES
Play Equipment	Recreation	1	Good	New	NA Provide access route
Signage	Recreation	1	Good	about 1 year old	YES

Parking	Utility	1	Good		Yes
Park Sign	Wayfinding	1	Fair	Wood structure with engraved text	

Notes:

Playground

Development: Provide hard surface access, to playground,

Curb Access at Street

Development: Coordinate with Iowa City Curb Access Program (no truncated domes)

PARK INVENTORY: EMMA HARVAT SQUARE



Curb Access – accessible to surrounding neighborhood



Pathways – sidewalks provide good perimeter access



Parking – not accessible



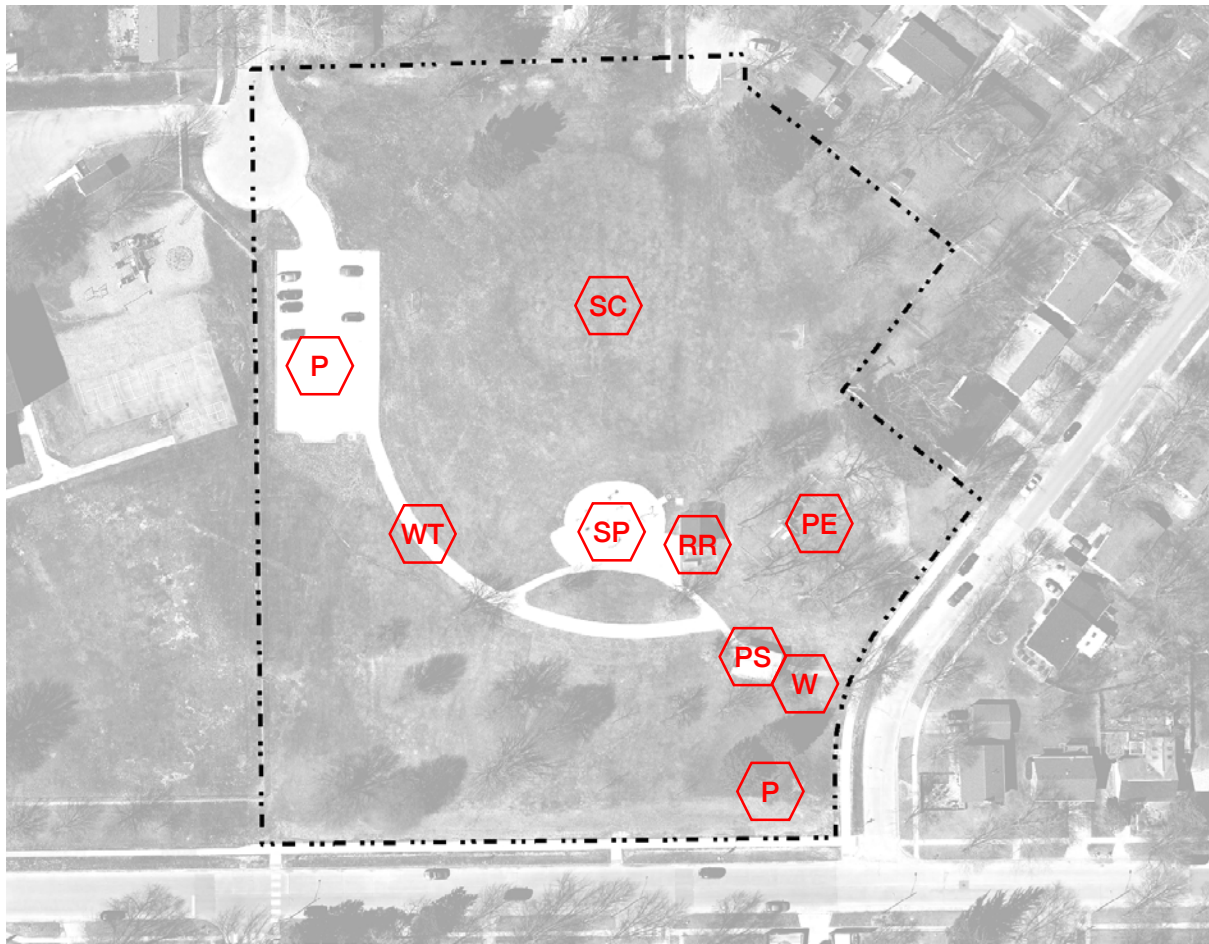
Signage – connection to trail system



Shelter – good access to adjacent areas



Playground – no pathways to playground



- Picnic Shelter
- Play Equipment
- Restroom
- Parking
- Walking Trail
- Splash Pad
- Soccer Field

Fairmeadows Park
2500 Miami Dr.

Acquired 1966, 1977; 4.9 acres

Item	Type	Qty	Cond.	Note	ADA?
Picnic Shelter	Destination	1	Good	2005, 20'x28' stain	YES
Play Equipment	Recreation	1	Fair / Poor	2005 Needs enhancement &/or replaced	NA should schedule for new playground
Splash Pad	Recreation	1	Good	2014 about 1 year old	YES
Mechanical Storage	Utility	1	Good	about 1 year old	YES
Restroom	Recreation	1	Good	2014 about 1 year old	YES
Soccer Field w/ Goals	Sports Facilities	1	Fair		YES adjacent trail provides accessible route
Drinking Fountain	Recreation	1	Fair	To Be Replaces	
Parking	Utility	1	Good		YES
Walking Trail	Recreation	1	Good		YES
Park Sign	Wayfinding	1	Fair	Wood structure with engraved text	
Grill	Destination	1			YES

Notes:

Playground

Development: Provide hard surface access, and replace playground, resilient surface and edging

Curb Access at Street

Development: Coordinate with Iowa City Curb Access Program (no truncated domes)

PARK INVENTORY: FAIRMEADOWS PARK



Park Identification Sign – schedule to upgrade



Pathways – good access



Shelter – good access to structure



Pathways – sidewalks provide good perimeter access



Playground – entire playground should be scheduled for upgrade



Playground – entire playground should be scheduled for upgrade

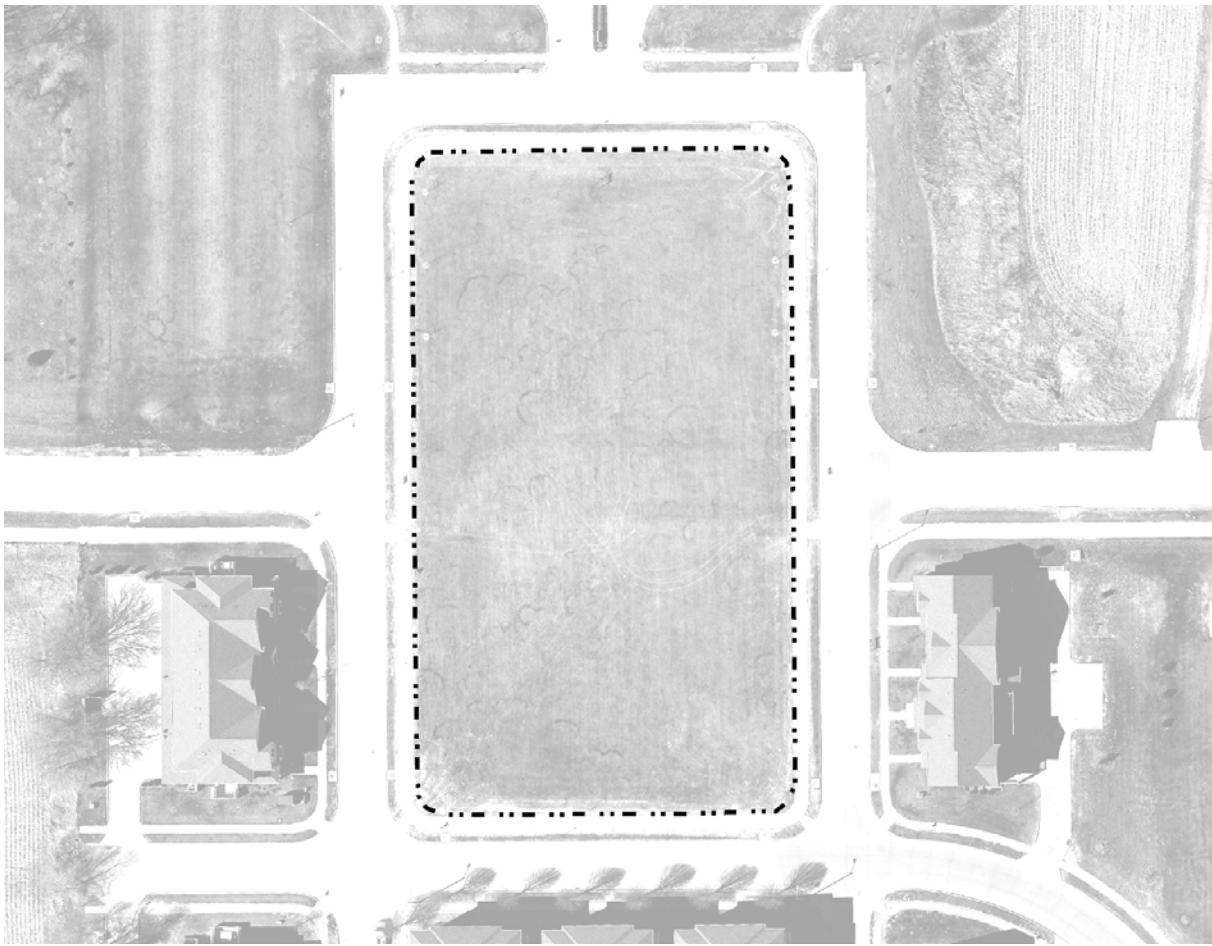
PARK INVENTORY: FAIRMEADOWS PARK



Splash Pad – good access



Legend



Frauenholtz-Miller Park*
4329 St. Patrick Dr.

Acquired 2007; 3.0 acres

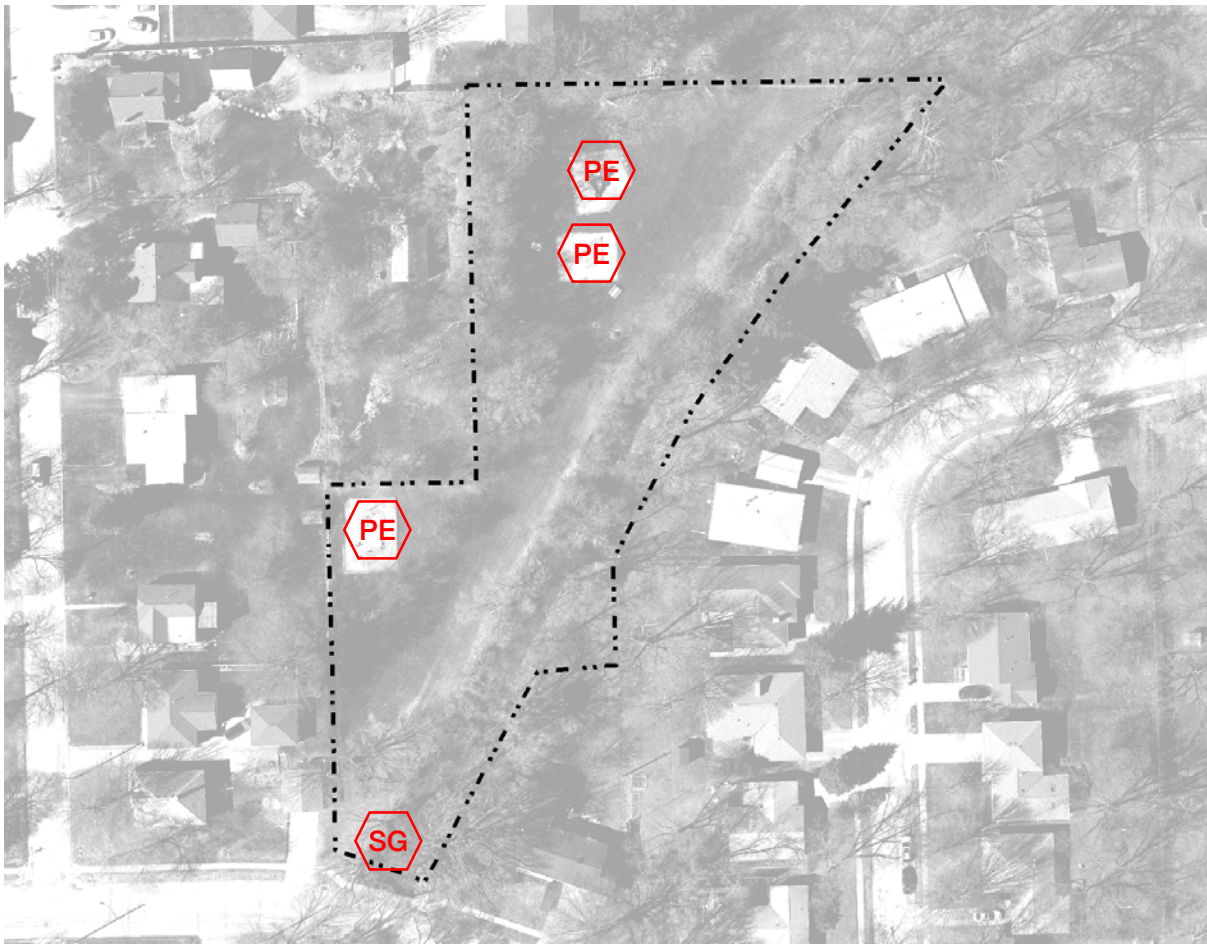


Notes

Development: Park under construction 2017.

PARK INVENTORY: FRAUENHOLTZ-MILLER PARK

NO IMAGES – TO BE REDEVELOPED



Legend

-  Play Equipment
-  Signage

Glendale Park
1250 E. Jefferson St.

Acquired 1966; 0.8 acres

Item	Type	Qty	Cond.	Note	ADA?
Play Equipment	Recreation	3	Fair	2008 Needs painting and enhancement	NA no accessible route & upgrade safety surface
Park Sign	Wayfinding	1	Poor	Wood structure with engraved text	

Notes:

Playground

Development: Provide hard surface access, and replace playground, resilient surface and edging

Curb Access at Street

Development: Coordinate with Iowa City Curb Access Program (no truncated domes)

PARK INVENTORY: GLENDALE PARK



Signage – Update



Pathway – No interior pathways



Pathway – No interior pathways



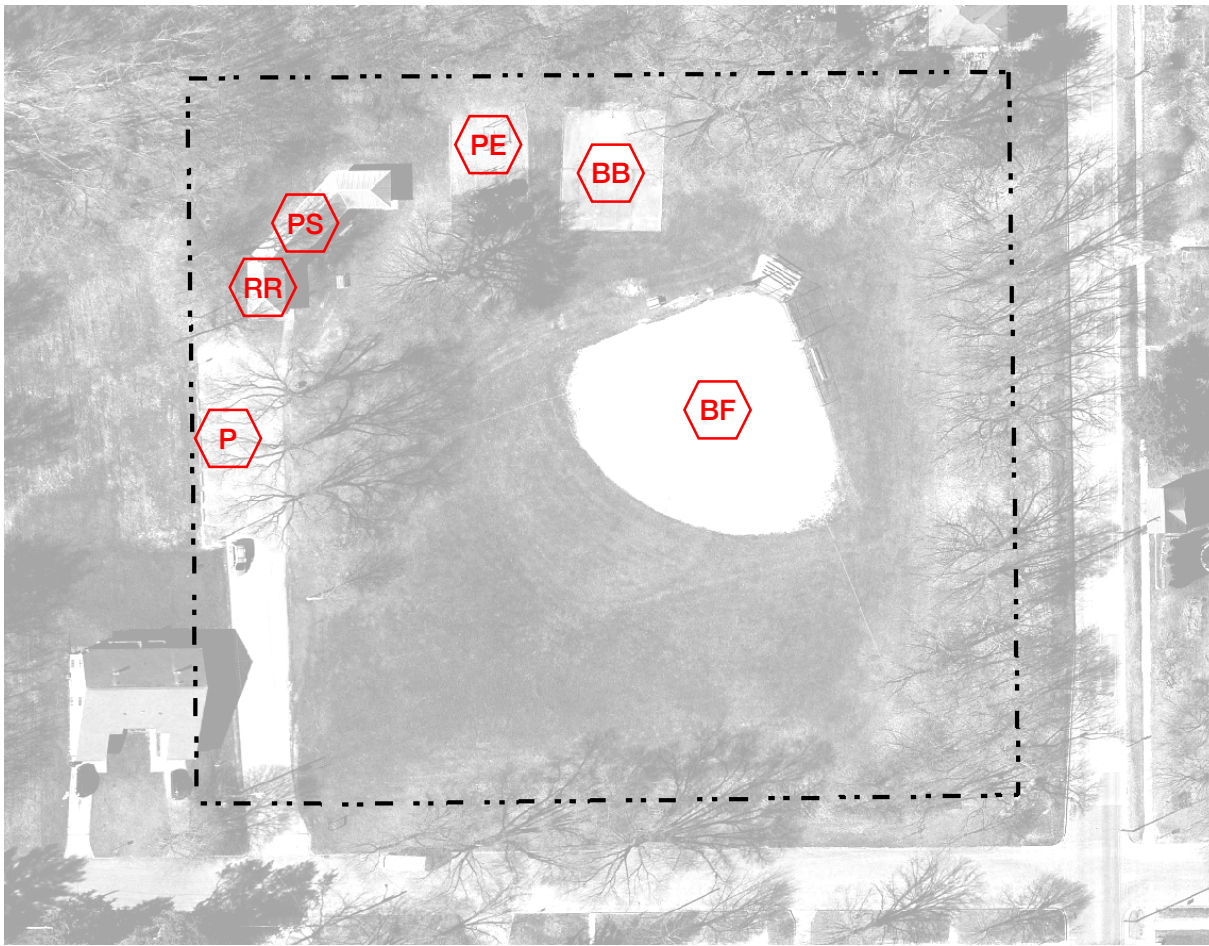
Pathway – No access to play structures



Street Visibility – Very limited



Creek – Limited access to creek



Legend

- Picnic Shelter
- Play Equipment
- Restroom
- Basketball Court
- Baseball Field
- Parking

Happy Hollow Park
800 Brown St.

Acquired 1945; 3.3 acres

Item	Type	Qty	Cond.	Note	ADA?	
Play Equipment	Recreation	1	Good	2005	NA	no accessible route & condition of safety surface
Picnic Shelter	Destination	1	Poor	1992, 20'x45' due for replacement	NA	lacks handicapped-accessible tables
Restroom	Destination	1	Poor	1992	NA	lacks handicapped-accessible fixtures
Basketball Court	Sports	1	Poor	1994 drain is plugged up	NA	no accessible route to it
	Facilities					
Baseball Field	Sports	1	Fair		NA	no accessible route to it
	Facilities					
Parking	Utility					
Grill	Destination	1			NA	Grill pad connected to shelter but inadequate width/alignment

Note: Picnic Shelter and Restrooms are scheduled to be renovated in 2018.

Playground

Maintenance: Remove and replace existing engineered wood fiber. Provide rubberized surface at points of structure access.



PARK INVENTORY: HAPPY HOLLOW PARK



Play equipment – lacks accessible route and safety surface



Picnic shelter – poor condition



Restrooms – lack accessible fixtures



Basketball courts – lacks accessible route; plugged drain



Baseball field – lacks accessible route

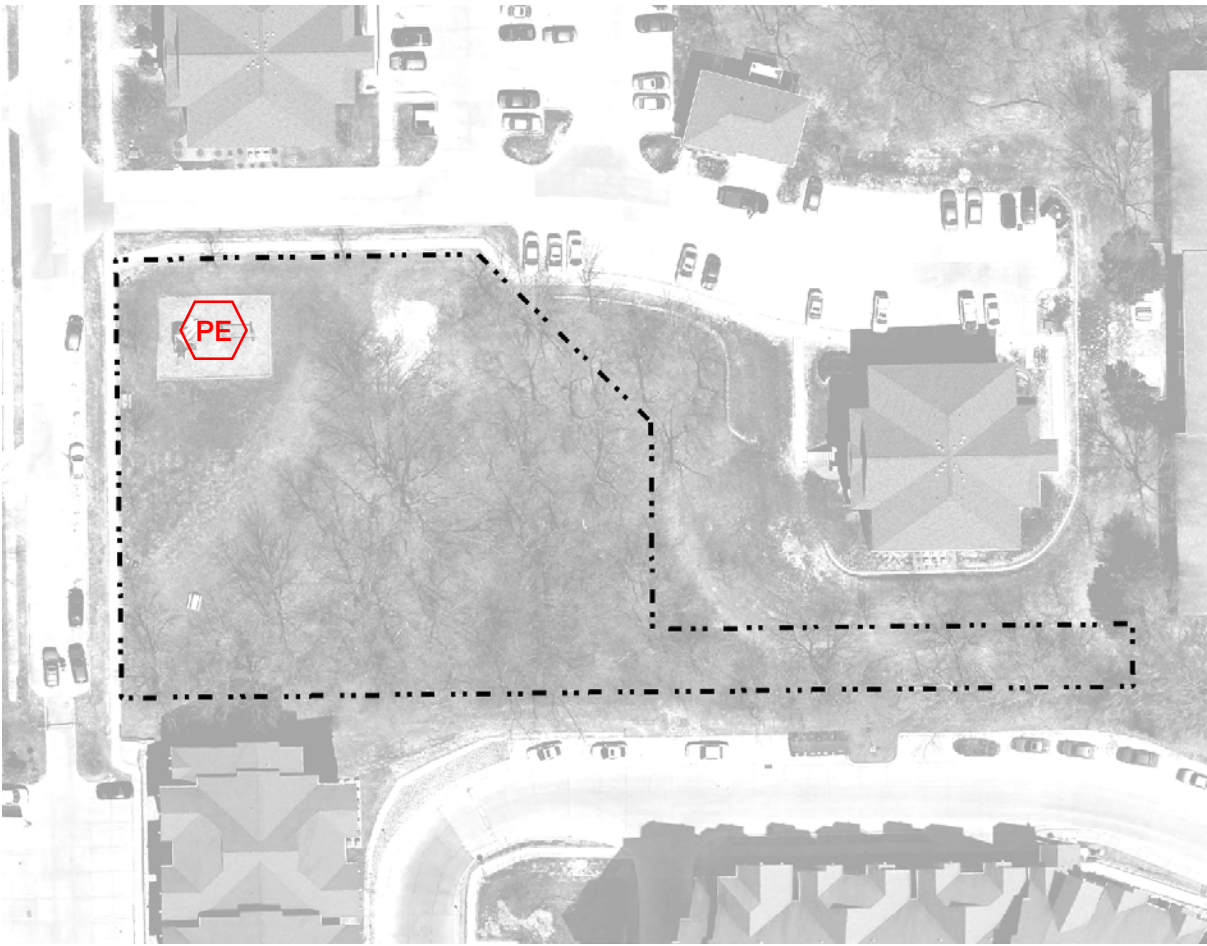


Parking



Legend

 Play Equipment



Harlocke Hill Park
940 Harlocke St.

Acquired 2004; 0.9 acres

Item	Type	Qty	Cond.	Note	ADA?	
Play Equipment	Recreation	1	Good	2005; not a lot of kids in neighborhood?	NA	no accessible route & condition of safety surface

Notes

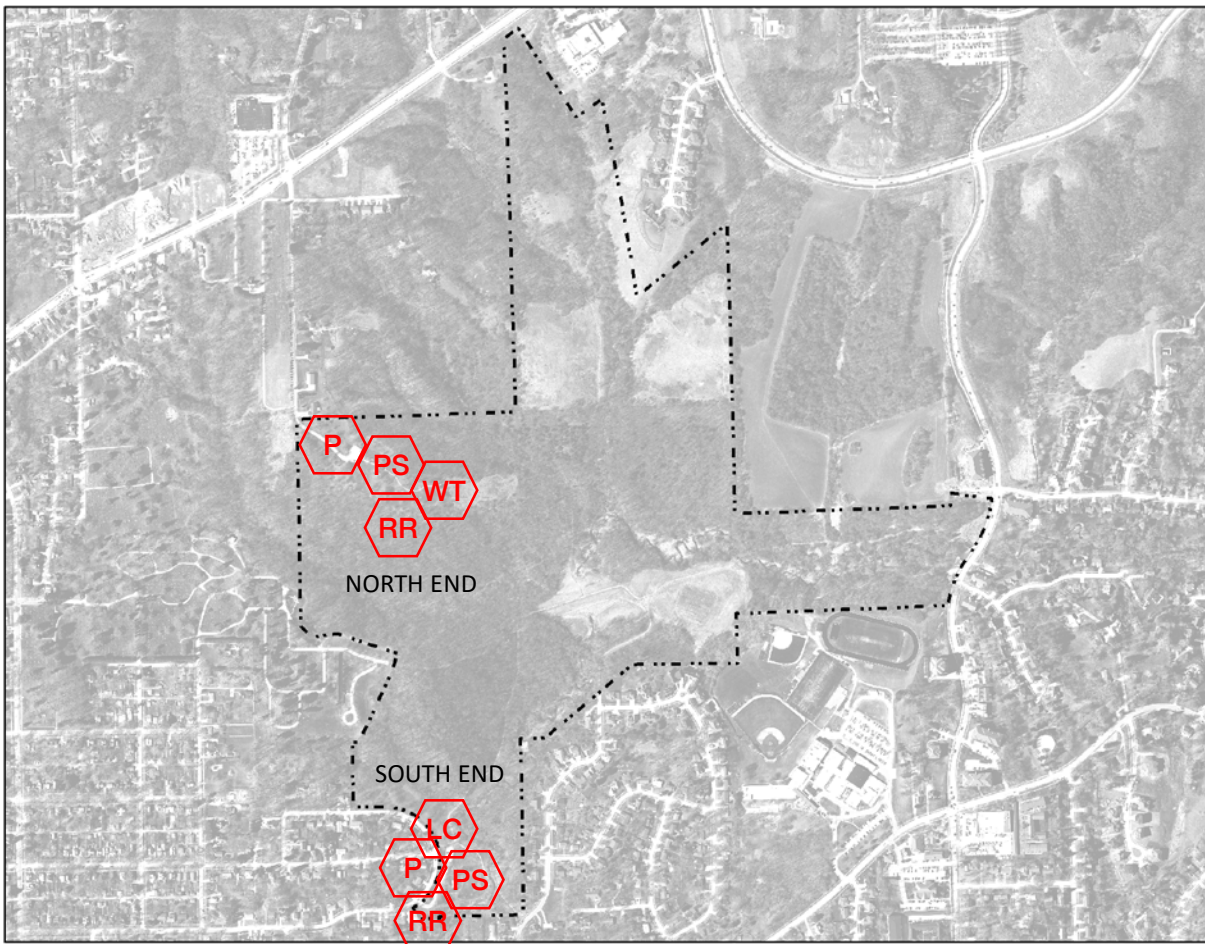
Playground

Maintenance: Remove and replace existing engineered wood fiber. Provide rubberized surface at points of structure access.

PARK INVENTORY: HARLOCK HILL PARK



Play equipment – lacks accessible route and safety surface



Legend

- Picnic Shelter
- Play Equipment
- Restroom
- Walking Trail
- Learning Center
- Parking

Hickory Hill Park* **Acquired 1951, 1966, 1992; 185 acres**
 East: 1st Ave.-Stuart Ct.; South: 1439 E. Bloomington St.; North: 800 Conklin St.

Item	Type	Qty	Cond.	Note	ADA?
North					
Walking Trail	Recreation	1	Good		NA no accessible route to park benches
Picnic Shelter	Destination	1	Fair		NA lacks handicapped-accessible tables; 40' Octagon
Restroom	Destination	1	Poor	at Picnic Shelter	NA lacks handicapped-accessible fixtures
Bench locations/seating	Destination	1	Good		
Parking	Utility		Good		
South					
Picnic Shelter	Destination	1	Fair		22' x 24'; Shelter 1982; \$22K in-house
Restroom	Destination	1	Good	2013; also is Tornado Safe Room	
Learning Center	Destination	1	Good	installed 2009	
Parking	Utility		Good		

Note: North Hickory Paving 2005. Accessibility in this park focuses on amenities near the North End (Conklin Lane) entrance and South End (East Bloomington / East Davenport / Cedar Streets) entrance. Nature trails throughout the park are left as primitive trails (non ADA accessible).

PARK INVENTORY: HICKORY HILL PARK



Waling trail north end – lacks accessible route to benches



Picnic shelter north end – lacks accessible tables



Restroom north end – lacks accessible fixtures



Bench location/seating north end



Picnic shelter south end



Restroom south end

PARK INVENTORY: HICKORY HILL PARK



Learning center south end



Parking north end



Parking south end



Legend

- PS Picnic Shelter
- PE Play Equipment

Hickory Trail Park
2831 Hickory Trail

Acquired ~2012

Item	Type	Qty	Cond.	Note	ADA?	
Picnic Shelter	Destination	1	Good	2014	NA	lacks handicapped-accessible tables
Play Equipment	Recreation	1	Good	2014; New	NA	no accessible route
Shade Structure	Destination	1	Good	2016	NA	

Notes:

Playground

Development: Hillside makes the addition of an ADA accessible trail difficult.

PARK INVENTORY: HICKORY TRAIL



Pathway – No interior pathways to creek



Pathway – No interior pathways to play structures



Pathway – No interior pathways



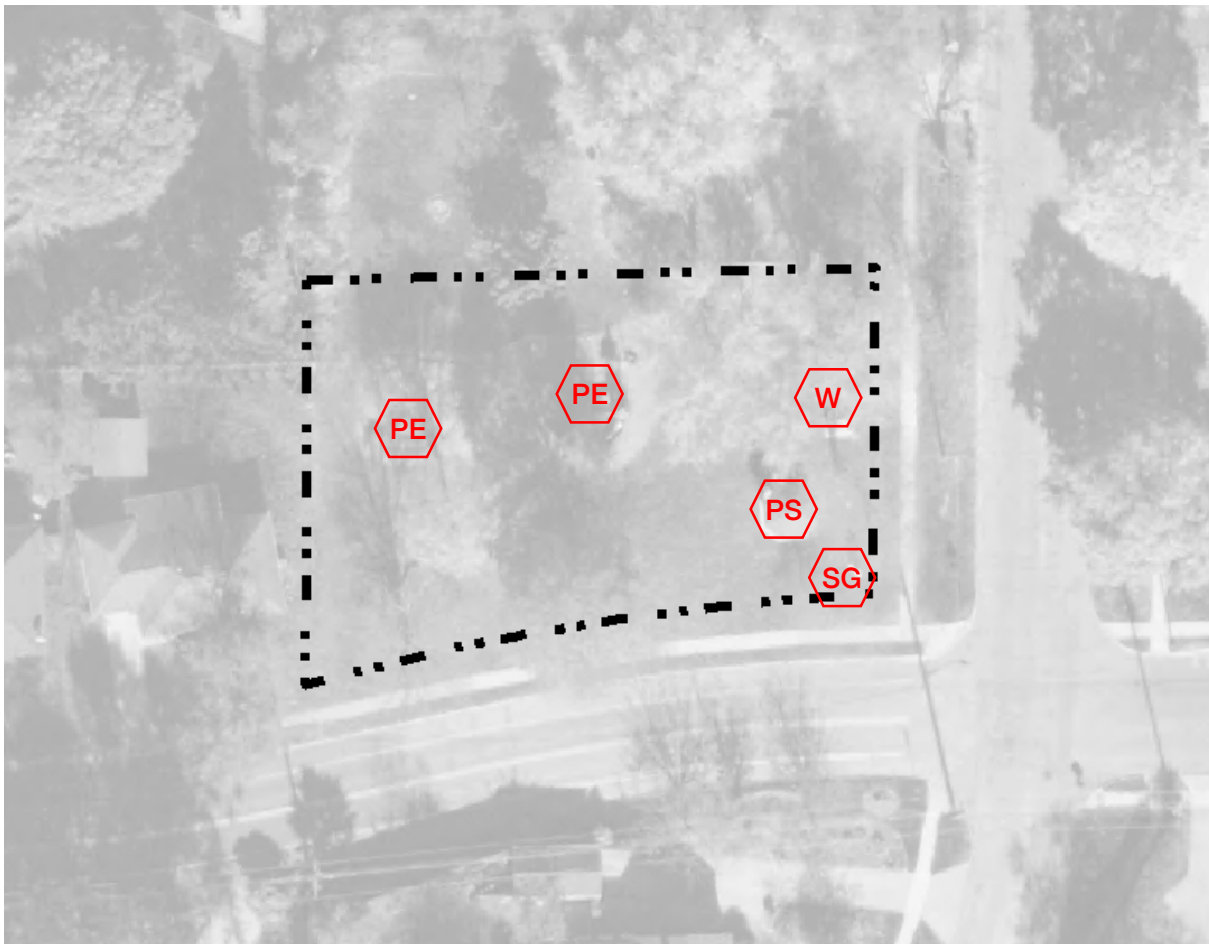
Shelter – No interior pathways to shelter



Pathway – Good perimeter access on north side of park



Pathway – Good access to benches on north side of park



Legend

-  Play Equipment
-  Picnic Shelter
-  Signage

Highland Park
750 Highland Ave.

Acquired 1972; 0.4 acres

Item	Type	Qty	Cond.	Note	ADA?
Play Equipment	Recreation	1	Good	2015; New	NA no accessible route
Picnic Shelter	Destination	1	Good	2016; New	NA no accessible route
Park Sign	Wayfinding	1	Good	2016; Modern Style	

Notes:

Playground

Development: Provide hard surface access

Curb Access at Street

Development: Coordinate with Iowa City Curb Access Program (no truncated domes)

PARK INVENTORY: HIGHLAND PARK



Shelter– No interior pathways



Drinking Fountain – No interior pathways



Pathway – No interior pathways



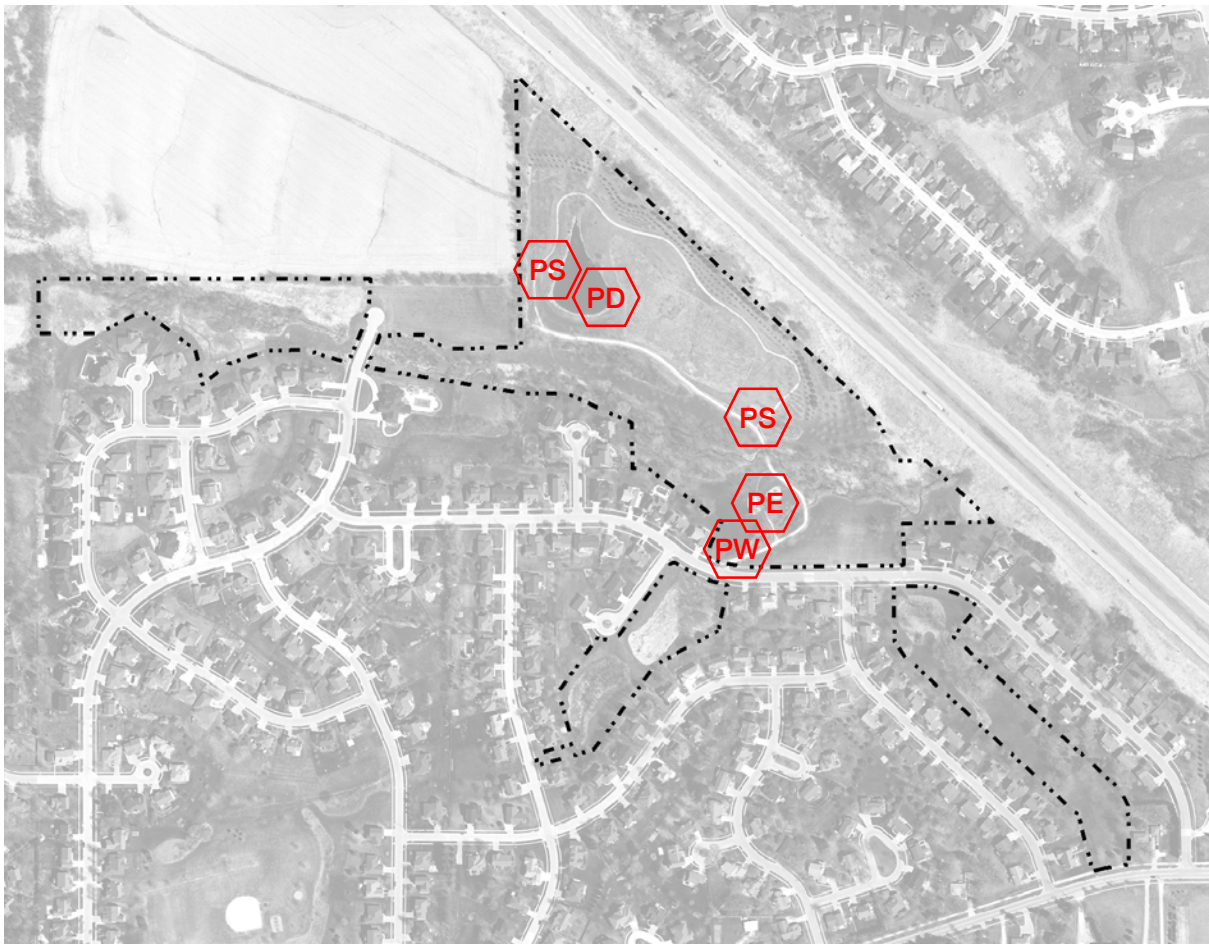
Pathway – No interior pathways



Playground– No interior pathways



Playground – No interior pathways



Legend

-  Picnic Shelter
-  Play Equipment
-  Pathway
-  Pond

Hunters Run Park
1050 Duck Creek Dr.

Acquired 1985; 26.6 acres

Item	Type	Qty	Cond.	Note	ADA?
Play Equipment	Recreation	1	Good	2002	NA no accessible route & condition of safety surface
Pathway	Recreation	1	Fair	2002	NA slope exceeds 5%
Picnic Shelter	Destination	1	Fair	2001, 20'x28'	NA no accessible route to it
Picnic Shelter	Destination	1	Fair	2002, 20'x20'	NA no accessible route to it
Pond	Environment	1	Good		

Notes

Playground

Maintenance: Remove and replace existing engineered wood fiber. Provide rubberized surface at points of structure access.

Bridge

Constructed 2002

Trail

2002

PARK INVENTORY: HUNTERS RUN PARK



Play equipment – lacks accessible route



Play equipment – lacks safety surface



Pathway – slope exceeds 5%



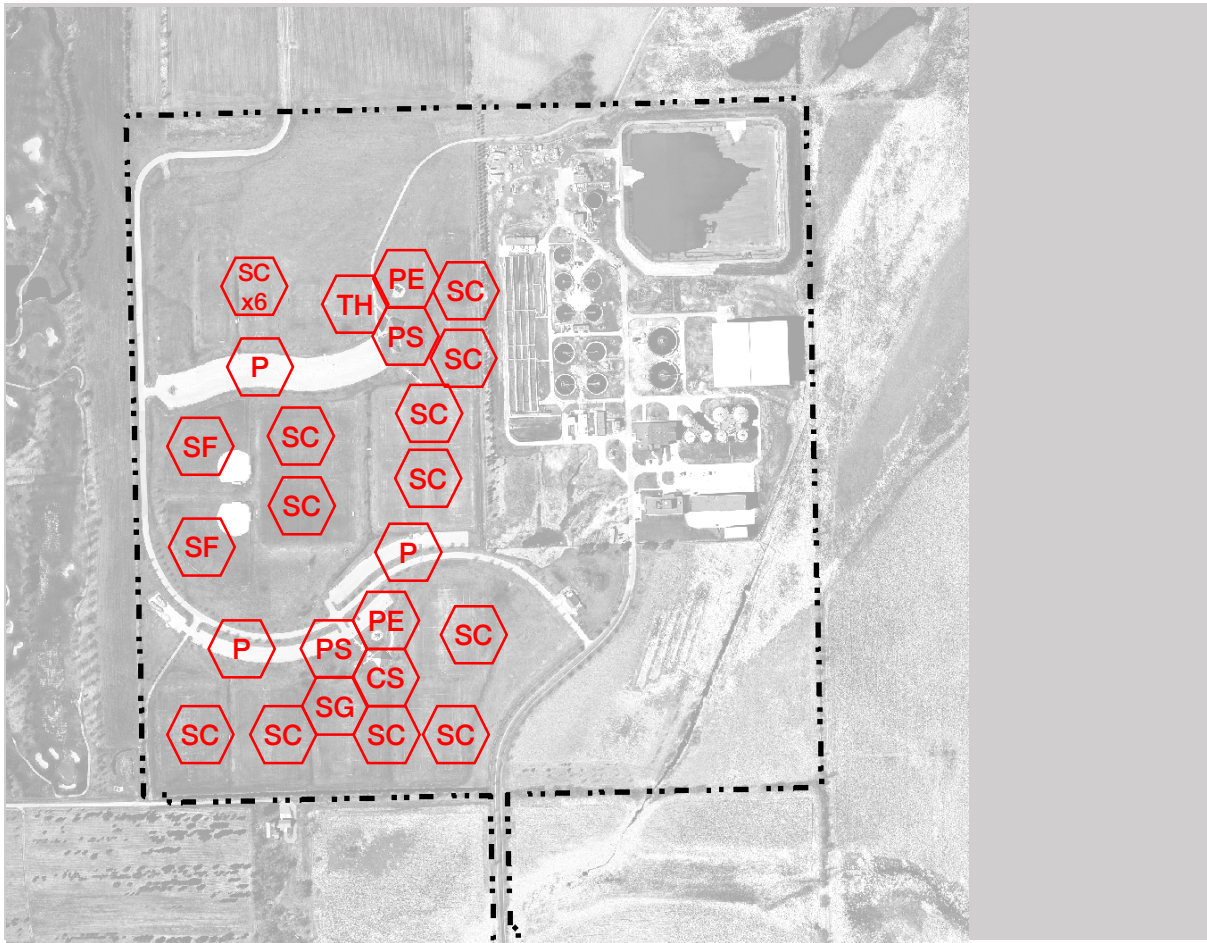
Pathway – slope exceeds 5%



Picnic shelter – lacks accessible route



Picnic shelter – lacks accessible route



Legend

- Picnic Shelter
- Play Equipment
- Restroom
- Parking
- Soccer Field
- Softball Field
- Trailhead
- Concession Stand

Iowa City Kickers Soccer Park
4400 Soccer Park Rd.

Acquired 1985; 108 acres

Item	Type	Qty	Cond.	Note	ADA?
Picnic Shelter	Destination	2	Good	2000	YES
Parking	Utility	694	Good	2000	YES
Restroom	Destination	2	Good	2000	YES
Open Play Field	Recreation		Good	2000	
Soccer Fields	Recreation	17	Good	2000	
Soccer Fields	Recreation	4	Good	2006	
Softball Fields	Recreation	2	Good	2000	
Concession Stands	Destination	2	Good	2000	
Play Equipment	Recreation	2	Good	2000, 2013	NA no accessible route
Trailhead	Destination	1	Good	2000	
Signage (Kiosk)	Utility		Good	2000	YES

Notes:

Playground

Development: Provide hard surface access

Curb Access at Street

Development: Coordinate with Iowa City Curb Access Program (no truncated domes)

Additional Facilities History:

- 2000 Maintenance building
- 2002 Maintenance building
- 2009 Pedestrian bridge
- 1997 Exterior fence
- 1998 I-5 drainage
- 1999 I-5 irrigation
- 2000, 2001 Parking lot

PARK INVENTORY: IOWA CITY KICKERS SOCCER PARK



Parking – Update



Access – Good interior access to main structures



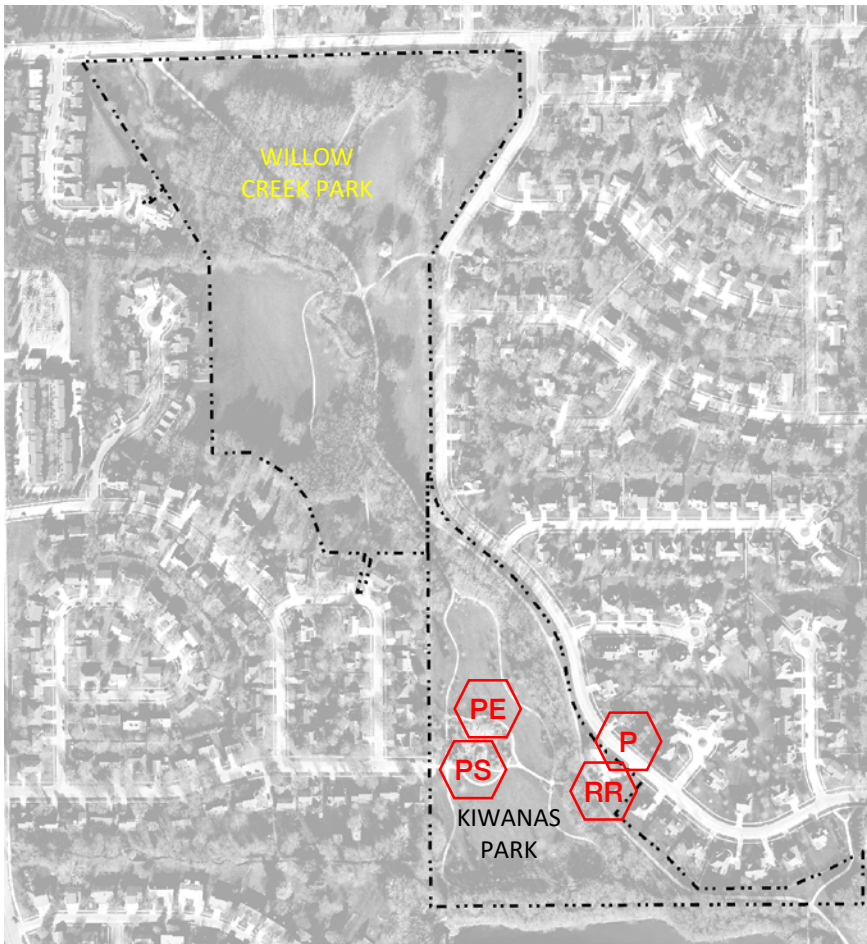
Access – limited interior access to shade structures



Signage – Unique park signage to specific facility



Access – limited interior access to play structures



Legend

- Picnic Shelter
- Play Equipment
- Restroom
- Parking

Kiwanis Park
1519 Teg Dr.

Acquired 1993*; 14 acres

Item	Type	Qty	Cond.	Note	ADA?	
Play Equipment	Recreation	1	Fair	1999	NA	no accessible route & condition of safety surface
Restroom	Destination	1	Good	2016		
Picnic Shelter	Destination	1	Fair	1999, 24'x24'	NA	lacks accessible table
Parking	Utility	1	Good		NA	lacks designated accessible parking

Notes

Playground

Maintenance: Remove and replace existing engineered wood fiber. Provide rubberized surface at points of structure access.

* \$100,000

PARK INVENTORY: KIWANAS PARK



Play equipment – lacks accessible route and safety surface



Parking – lacks accessible and designated parking



Restroom



Picnic shelter – lacks accessible table



Legend

-  Picnic Shelter
-  Walking Trail



Longfellow Nature Trail

Acquired ~2012; 2.4 acres

Item	Type	Qty	Cond.	Note	ADA?
Shelter	Destination	1	Good	Shelter #1	YES
Walking Trail	Tunnel	1	Good	2002	YES

Notes

PARK INVENTORY: LONGFELLOW PARK TRAIL



Access – Good access to adjacencies



Pathway – Path is a crushed stone and is in fair to good condition



Pathway – Pedestrian pathway only



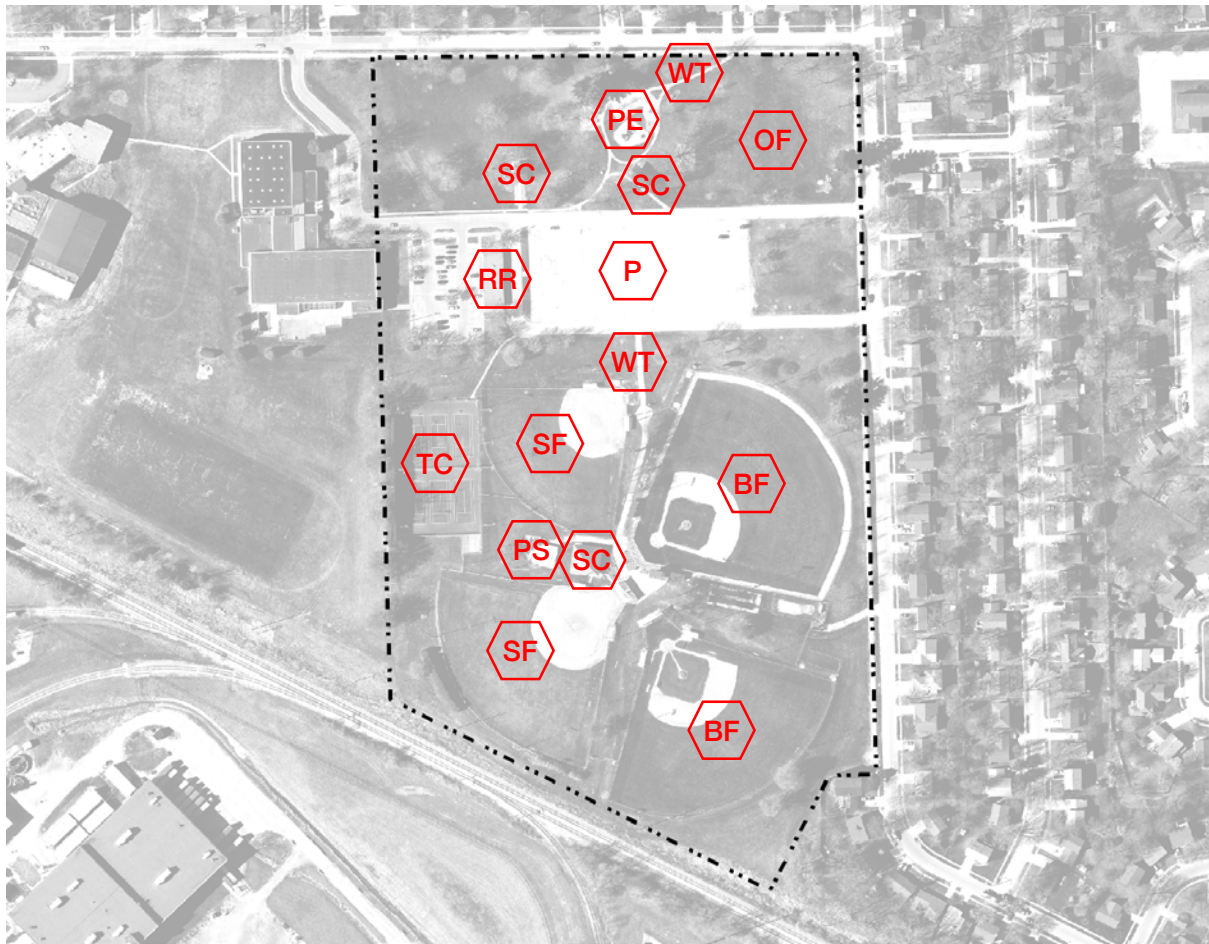
Pathway – Transition from crushed aggregate to asphalt



Trail – Underpass



Trail – Asphalt



Legend

-  Picnic Shelter
-  Play Equipment
-  Restroom
-  Parking
-  Soccer Field
-  Softball Field
-  Baseball Field
-  Tennis Court
-  Open Field
-  Walking Trail

Mercer Park
1317 Dover St.

Acquired 1966; 30.5 acres

Item	Type	Qty	Cond.	Note	ADA?
Play Equipment	Recreation	1	Good	2015; New	YES
Picnic Shelter	Destination	1	Good	Shelter #1	YES
Picnic Shelter	Destination	1	Fair	Shelter #2	YES 30' x 30'
Water	Utility	2	Fair		
Restroom	Destination	1	Fair	#1; needs painting	YES
Open Play Field	Recreation	1	Good		
Baseball Field	Sports Facilities	2	Good		YES access to one of the two fields
Softball Field	Sports Facilities	2	Good		YES access to one of the two fields
Pickleball / Tennis Courts	Recreation	6	Good		YES pathway to courts

Notes:

Playground

- Development: Provide access to swings
- Maintenance: At points of structure access, place rubberized surface

Additional Facilities History:

Storage Building – 1982
 Parking Resurfacing – 2006
 Scoreboards – 2011
 Pickleball/Tennis Courts (?) – Originally built

1975; renovated + lights 1991; new lights 2003; renovated 2000; renovated 2017
 Mercer Field 1 & 2 Fence 1985
 Mercer field 1 backstop, fence & lights 1999
 Parking lot 1991

Mercer Field 3 backstop and fence 2000; fence 2004; shade 2005
 Restroom/concession 2001
 Mercer Field 1 lighting & irrigation 2004
 Mercer Field 2 irrigation 2016

PARK INVENTORY: MERCER PARK



Access – Good access along streets and to interior facilities



Access – Good access to shelters



Access – Good access to play structure and adjacent facilities



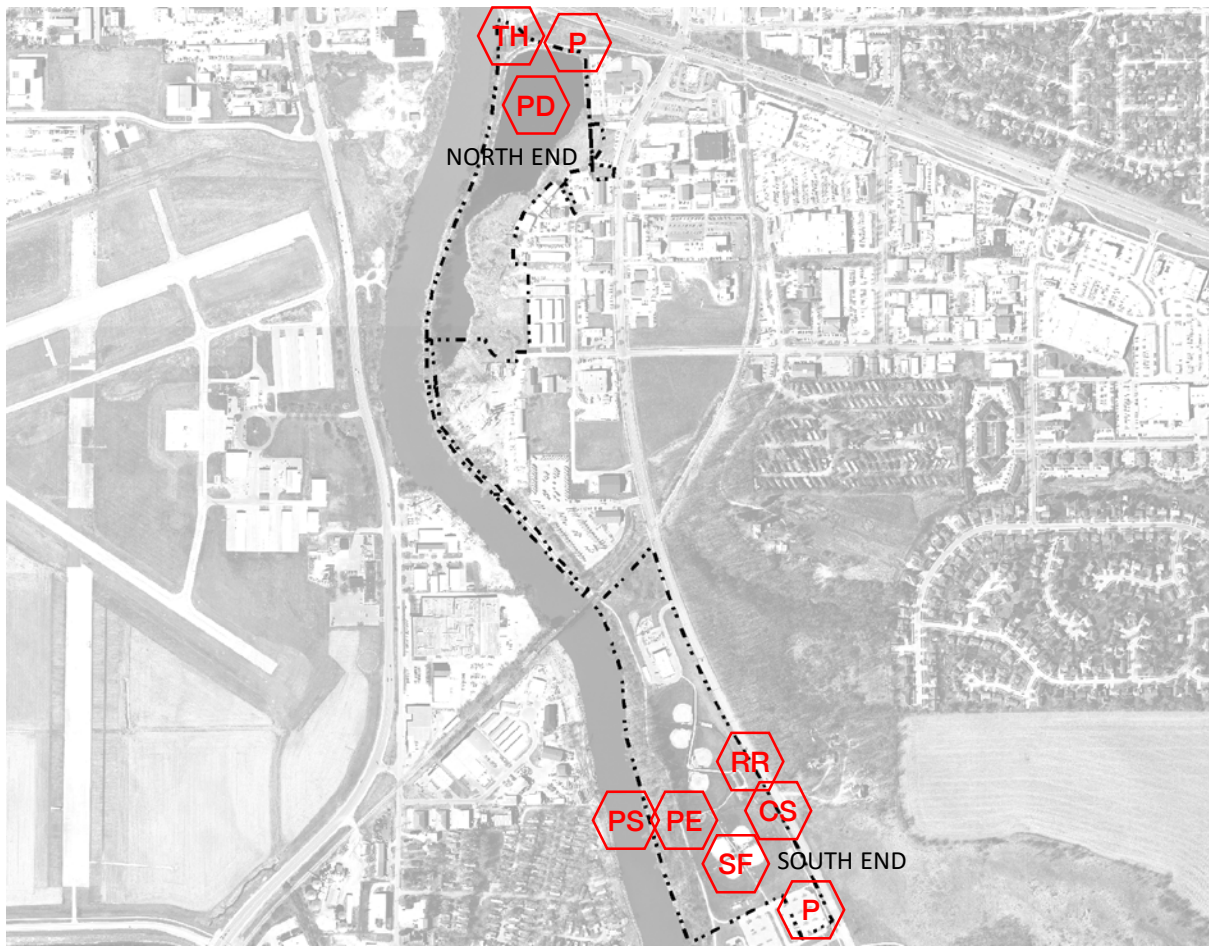
Access – Good access to shelters



Access – Good access to play structure and adjacent facilities



Access – limited access to swings



Legend

- PS Picnic Shelter
- PE Play Equipment
- RR Restroom
- SF Softball Field
- CS Concession Stand
- TH Trailhead
- PD Pond
- P Parking

Napoleon Park
2501 S. Gilbert St.

Acquired 1978; 28.8 acres

Item	Type	Qty	Cond.	Note	ADA?
North					
Trailhead	Destination	1	Fair	gravel parking lot	
Pond	Environment	1	Good	former sand pit	
Parking	Utility				
South					
Play Equipment	Recreation	1	Good		NA no accessible route & lacks safety surface
Picnic Shelter	Destination	1	Fair		
Restroom	Destination	1	Poor	secondary use, includes Picnic Shelter	NA lacks handicapped-accessible fixtures
Concession Stand	Destination	1	Good	includes new accessible restrooms	
Softball Field	Sports Facilities	8	Good		NA some fields lack accessible route to bleachers
Parking	Utility				NA lacks signage, not van-accessible

Notes

Playground

Maintenance: Remove and replace existing engineered wood fiber. Provide rubberized surface at points of structure access.

Additional Facilities History:

Fields 1–4 renovated 2012
Softball fence 1998

Lighting 1997 & 2005
Irrigation system 1997
Parking lot 1998
Shelter 1999

Plant room & storage 2001
Shade structures 2011

* 2000: \$273,340

PARK INVENTORY: NAPOLEON PARK



North trailhead – gravel parking lot



North pond



South play equip. – lacks accessible route and safety surface



South picnic shelter



South restroom – lacks accessible fixtures



South concession stand

PARK INVENTORY: NAPOLEON PARK

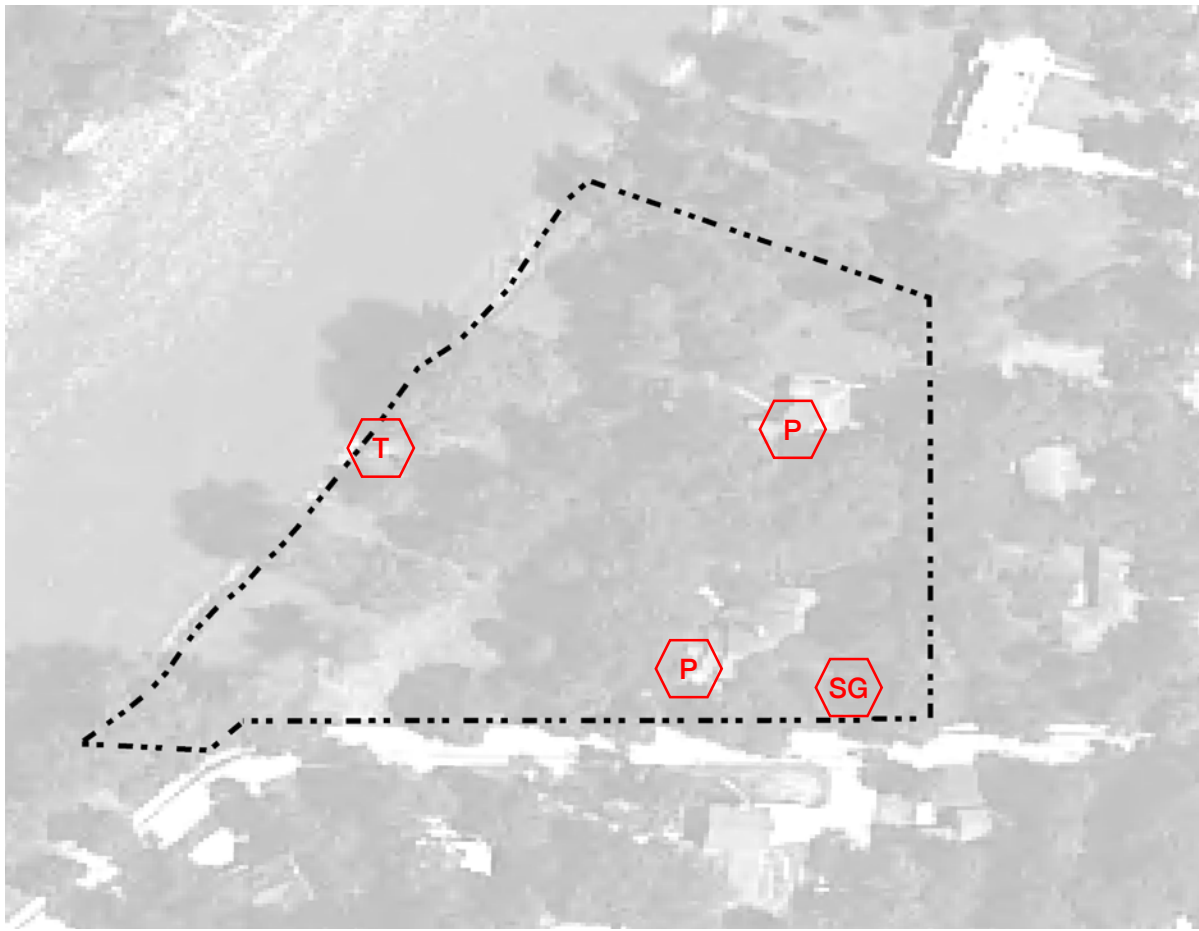


South softball field – some bleachers lack accessible route



South parking

PARK INVENTORY: NED ASHTON HOUSE



- Pavillion
- Trail
- Parking
- Signage

Ned Ashton House
Benton St. and Iowa River

Acquired 2008

Item	Type	Qty	Cond.	Note	ADA?
Trail	Recreation	1	Good	2016, riverfront	YES
Park Sign	Wayfinding	1	Good	stone structure	YES
Ned Ashton House	Destination	1	Good	historic structure	YES Did not evaluate the interior
Park Sign	Wayfinding	1	Good	Stone Structure	

Notes:

PARK INVENTORY: NED ASHTON HOUSE



Ashton House – back lawn



Pathways – sidewalks provide good access to house



Back property under construction



Signage – unique sign



Pathway & Ramp to House – good access to adjacent areas



Parking – accessible



Legend



Ned Ashton Park
2 W. Benton St.

Acquired 1990; 0.6 acres

Item	Type	Qty	Cond.	Note	ADA?
Trailhead	Destination	1	Good		NA lacks accessible and designated parking

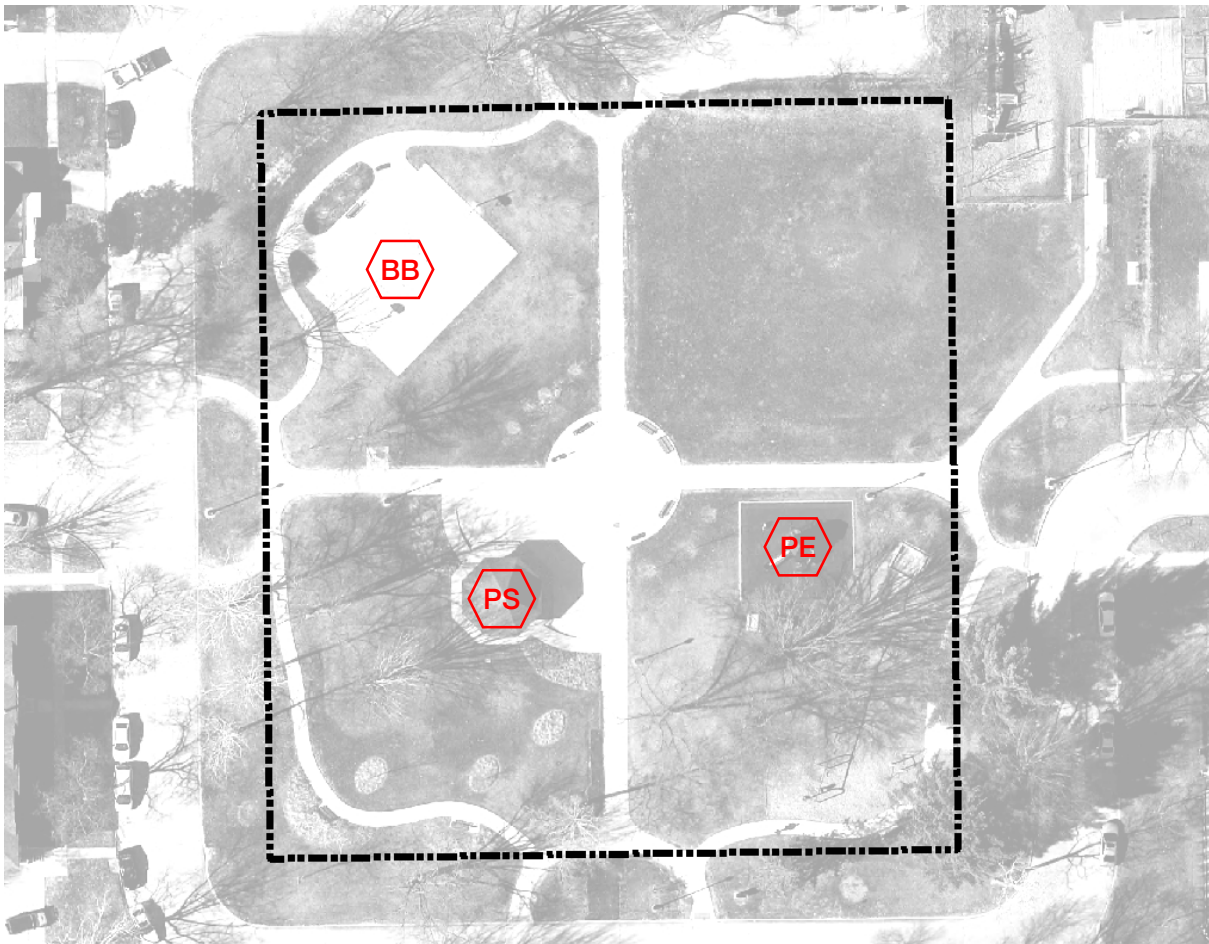
PARK INVENTORY: NED ASHTON PARK



Trailhead – lacks accessible and designated parking



Parking



Legend

- Picnic Shelter
- Play Equipment
- Basketball Court

North Market Square Park
600 Fairchild St.

Acquired 1839; 1.5 acres

Item	Type	Qty	Cond.	Note	ADA?
Play Equipment	Recreation	1	Good	2012	YES/NO Accessible surface; route requires additional mulch or expanded paving
Picnic Shelter	Destination	1	Good	2012, 20'x24'	YES
Basketball Court	Sports Facilities	1	Good	2012	YES

Notes:

On-street parking
Curb-cuts for access

PARK INVENTORY: NORTH MARKET PARK



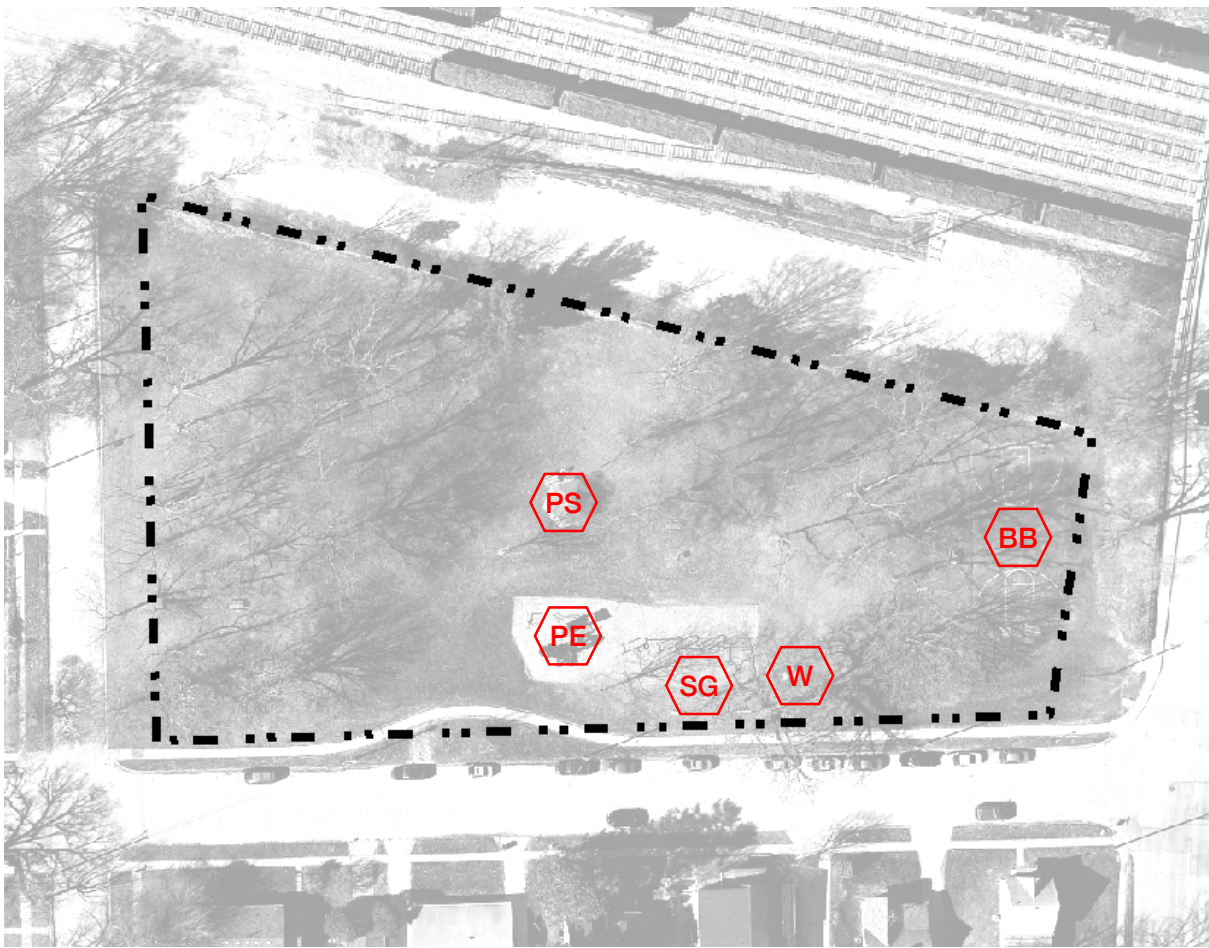
Play equipment



Picnic shelter



Basketball court



Legend

-  Picnic Shelter
-  Play Equipment
-  Basketball Court
-  Signage
-  Water

Oak Grove Park
700 Page St.

Acquired 1973; 1.6 acres

Item	Type	Qty	Cond.	Note	ADA?
Picnic Shelter	Destination	1	Fair	16'x16'	NA lacks accessible route
Play Equipment	Recreation	1	Good	2006	NA no accessible route
Water	Utility	2	Fair		NA no accessible route
Basketball Court	Destination	1	Fair	Resurfacing required	NA lacks accessible route

Notes:

Playground

- Development: Provide access to swings
- Maintenance: At points of structure access, place rubberized surface

Interior Pathways

- Development: Plan and construct pathways to park destinations including playground, shelter and basketball court.

PARK INVENTORY: OAK GROVE PARK



Access – Perimeter access at the street is continuous



Access – Interior access to playground structures is limited



Access – Interior access to shelter is limited



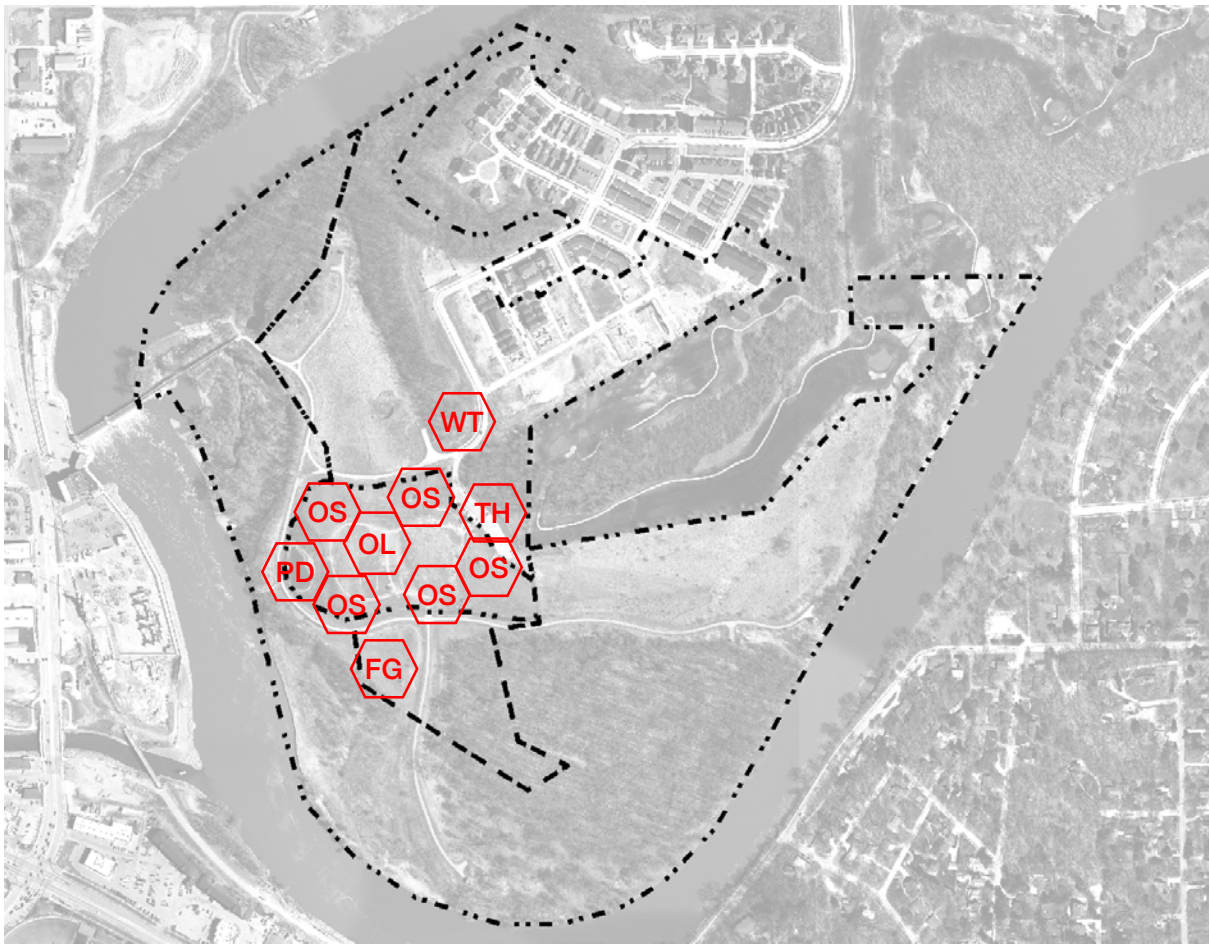
Park Identification Sign – Upgrade to new park sign package



Access – Interior access to basketball court is limited



Access – Interior access to drinking fountain is limited



Legend

- Walking Trail
- Off-Leash Area
- Frisbee Golf
- Open Shelter
- Pond
- Trailhead

Peninsula Park / Thornberry Off-Leash Dog Park
1790 Canton Street

Acquired 2005; 143.5 acres

Item	Type	Qty	Cond.	Note	ADA?
Walking Trail	Recreation	1	Good	New	YES
Off-leash area	Recreation	13	Good		YES
18-hole disc golf course	Recreation	1	Good	2008	NA no accessible route
Trailhead	Destination	1	Good		YES

Iowa City Thornberry Off-Leash Dog Park
11 Total Acres



Notes

2008 Shelter

Green line = chain-link fence

PARK INVENTORY: PENINSULA PARK THORNBERRY OFF-LEASH DOG PARK



Park Identification Sign –



Access – Accessible parking directly in front of entrance



Access – Gate access



Shelters – Limited access to shade structures



Access – Limited access to information board



Access – Interior access to pond and pier.



Legend

-  Picnic Shelter
-  Bench/ Seating
-  Signage
-  Art

Pheasant Hill Park
2649 Concord Circle

Acquired 1975; 3.3 acres

Item	Type	Qty	Cond.	Note	ADA?
Picnic Shelter	Destination	1	Good	Shelter #1	NA no accessible route
Bench (Art)	Destination	1	Good	2015; Tile mosaic bench	NA no accessible route
Art	Destination	9	Good	Tile mosaic columbs	NA no accessible route
Park Sign	Wayfinding	1	Poor	Wood structure with engraved text	

Notes:

Playground

Development: That playground being replaced in 2017.

Interior Pathways

Development: Plan and construct pathways to park destinations including playground and shelter more accessible. Topography of this park – steep slopes – may make the addition of an ADA accessible trail difficult.

PARK INVENTORY: PHEASANT HILL PARK



Access – Sidewalk access at Green Mountain Drive



Access – Limited sidewalk access off of Concord Circle

PARK INVENTORY: PHEASANT HILL PARK



Access – Limited park interior access



Access – Limited access to art elements



Access – Limited access to art elements



Access – Limited access to benches



Access – Limited access to play structures

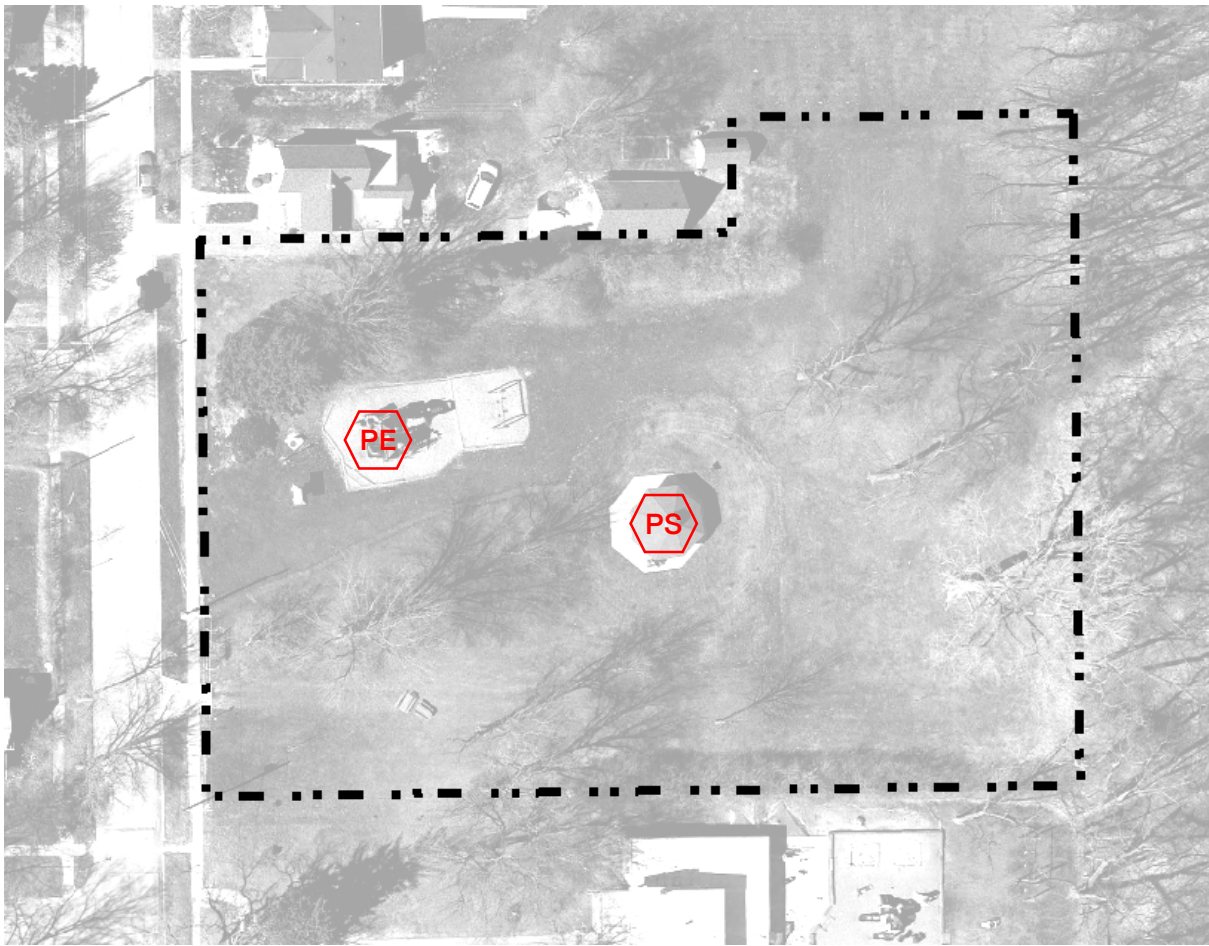


Access – Limited access to picnic shelters



Legend

- PS Picnic Shelter
- PE Play Equipment



Reno Street Park
516 Reno St.

Acquired 1967, 1994; 1.3 acres

Item	Type	Qty	Cond.	Note	ADA?	
Play Equipment	Recreation	1	Good	2004	NA	no accessible route & condition of safety surface
Picnic Shelter	Destination	1	Good	2014; the entire site is built on a hill	NA	no accessible route; 16' x 16'

Notes

Playground

Maintenance: Remove and replace existing engineered wood fiber. Provide rubberized surface at points of structure access.

PARK INVENTORY: RENO STREET NEIGHBORHOOD PARK



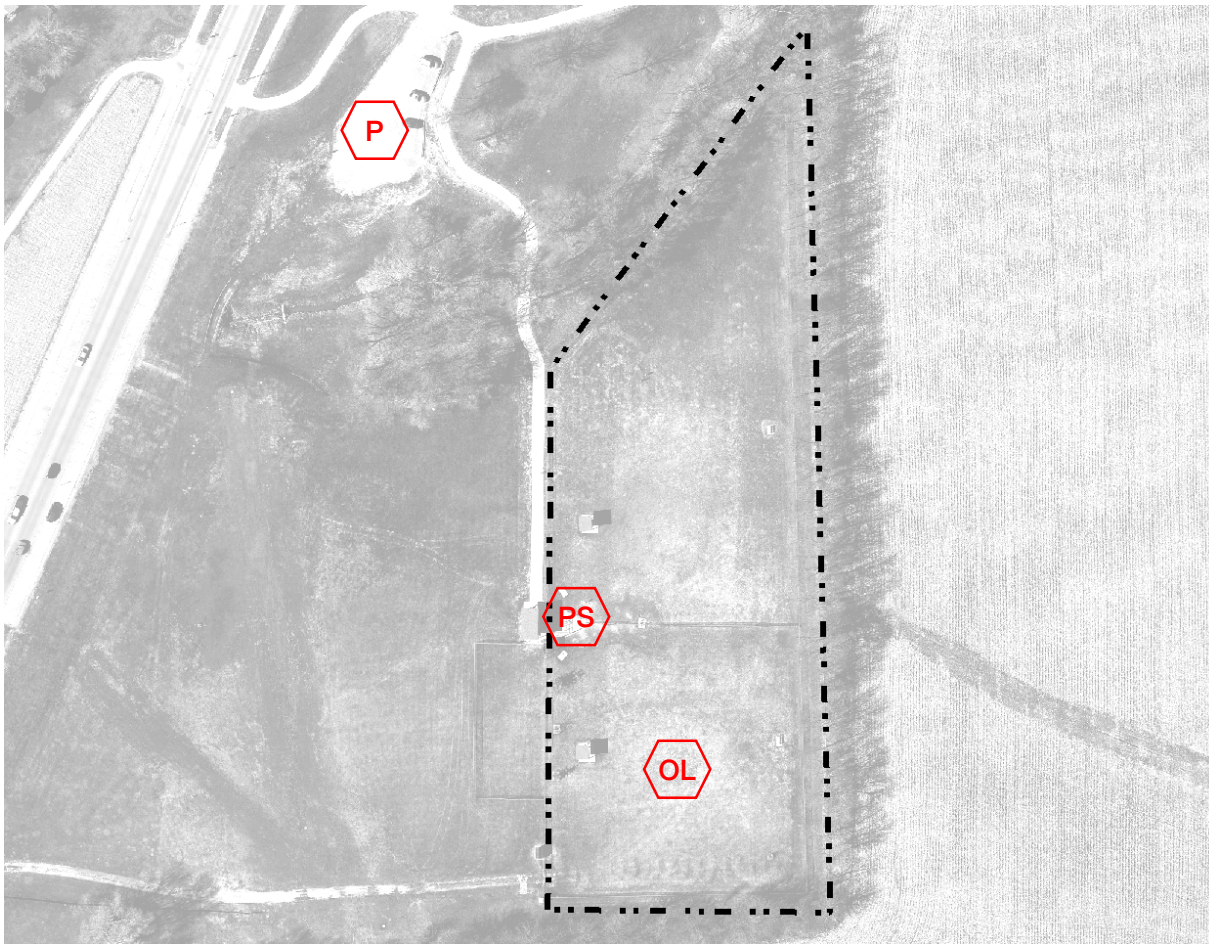
Play equipment – lacks accessible route



Play equipment – lacks safety surface



Picnic shelter – lacks accessible route



Legend

-  Picnic Shelter
-  Parking
-  Off-Leash Area

Rita's Ranch Dog Park
640 S. Scott Blvd.

Item	Type	Qty	Cond.	Note	ADA?
Off-leash area	Recreation	2	Good	2010	NA no accessible route to shelters within areas
Picnic Shelter	Destination	1	Good	2010	NA no accessible route
Parking	Utility	1	Good	gravel parking lot	NA lacks accessible and designated parking

PARK INVENTORY: RITA'S RANCH DOG PARK



Off-leash area – no accessible route to shelters



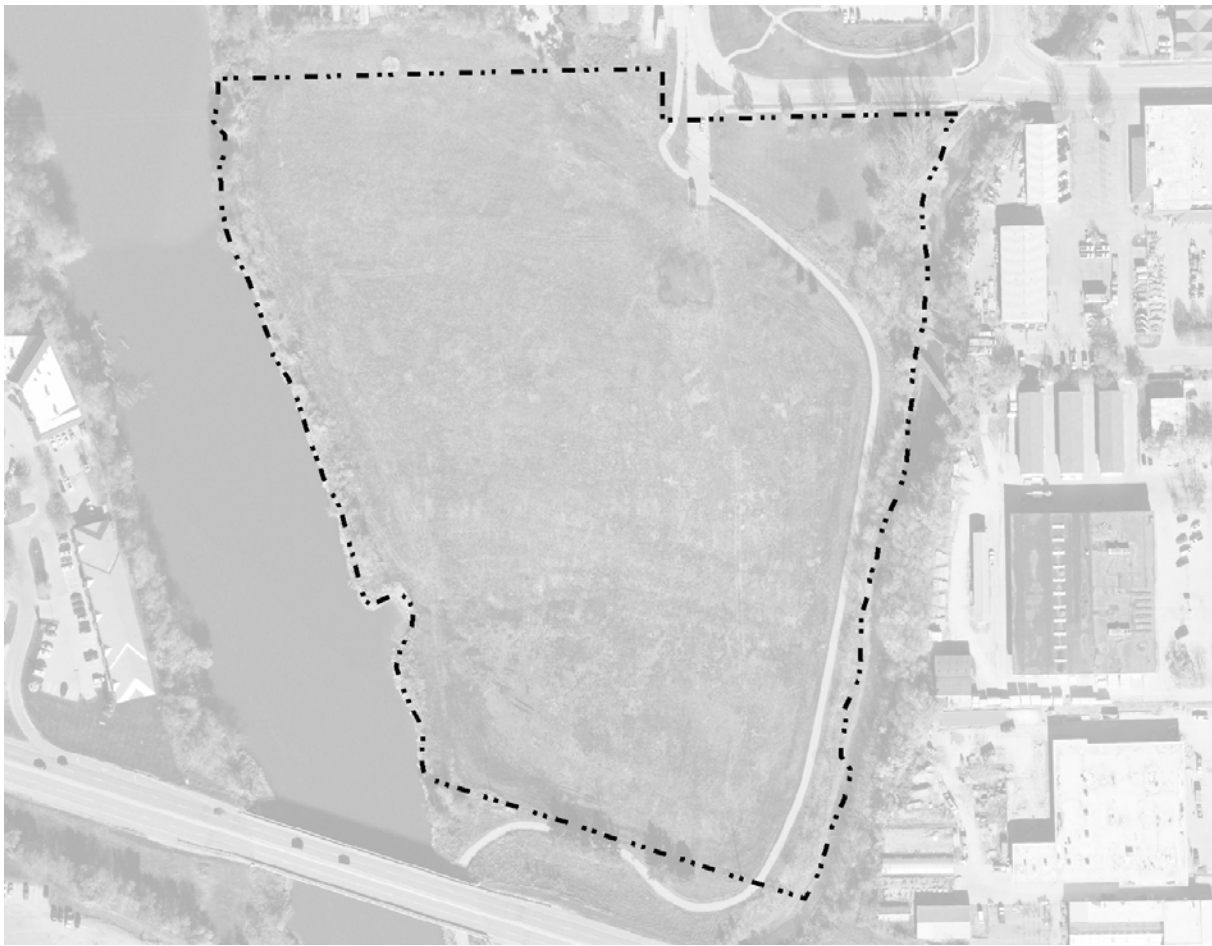
Picnic shelter



Parking – lacks accessible and designated parking



Legend



Riverfront Crossings Park
1001 Clinton Street

Developed 2017; 17.5 acres

Notes

Construction of trails, parking, wetlands and nature play underdevelopment in 2017-18.





Legend

- Picnic Shelter
- Trailhead
- Parking

Ryerson's Woods Park
4399 Oak Crest Hill Road

Acquired 1985; 49.2 acres

Item	Type	Qty	Cond.	Note	ADA?	
Picnic Shelter	Destination	1	Fair	16'x20'	NA	no accessible table, path and parking lot needs striping/signage
Trailhead	Destination	1	Good		NA	path and parking lot needs striping/signage
Parking	Utility	1	Good	gravel parking lot	NA	lacks accessible level parking

Note: Accessibility in this park focuses on amenities near the (Old Highway 218 / Oak Crest Hill Road SE) entrance. Nature trails throughout the park are left as primitive trails (non ADA accessible).

2016 State preserve status

PARK INVENTORY: RYERSON'S WOODS



Picnic shelter – lacks accessible table



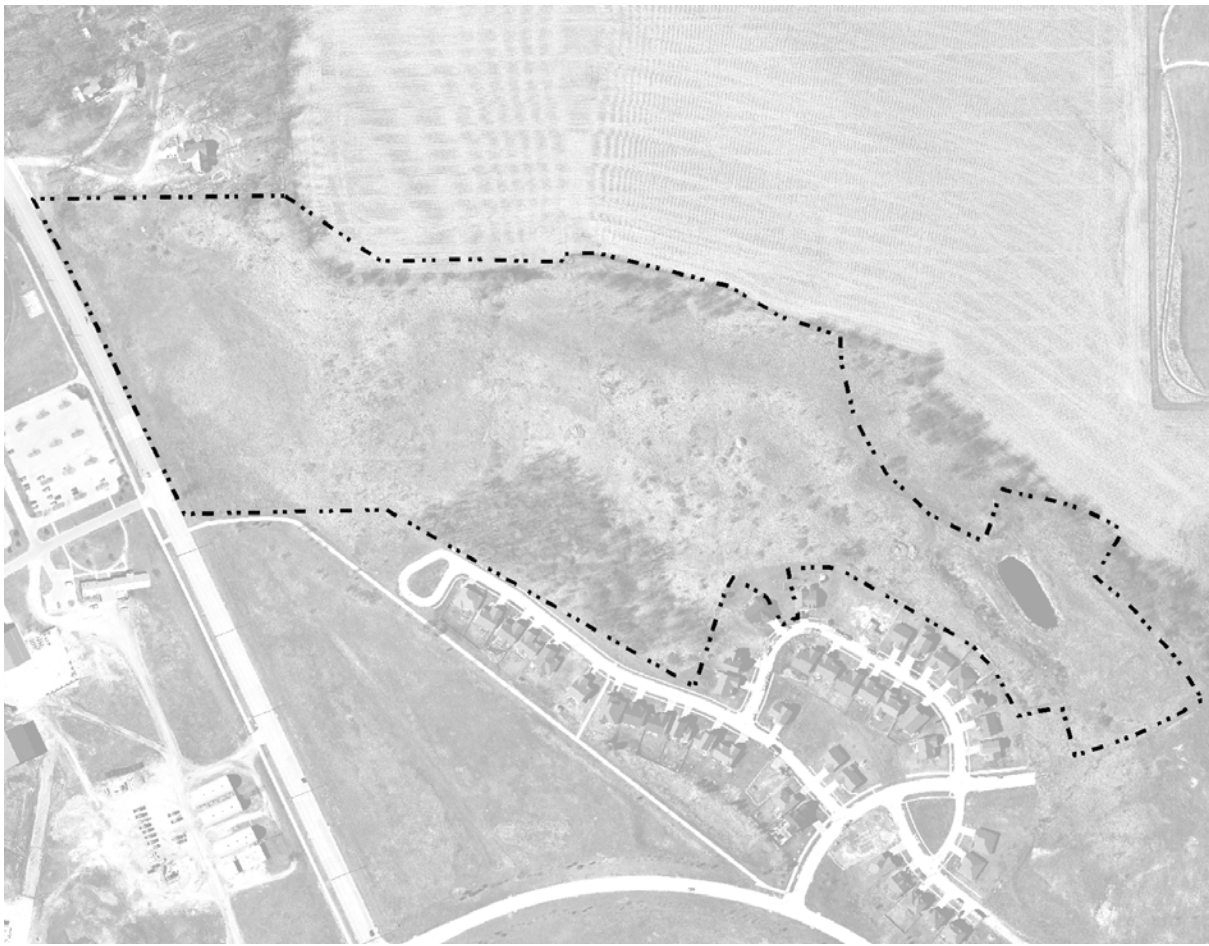
Trailhead



Parking – lacks accessible level parking



Legend

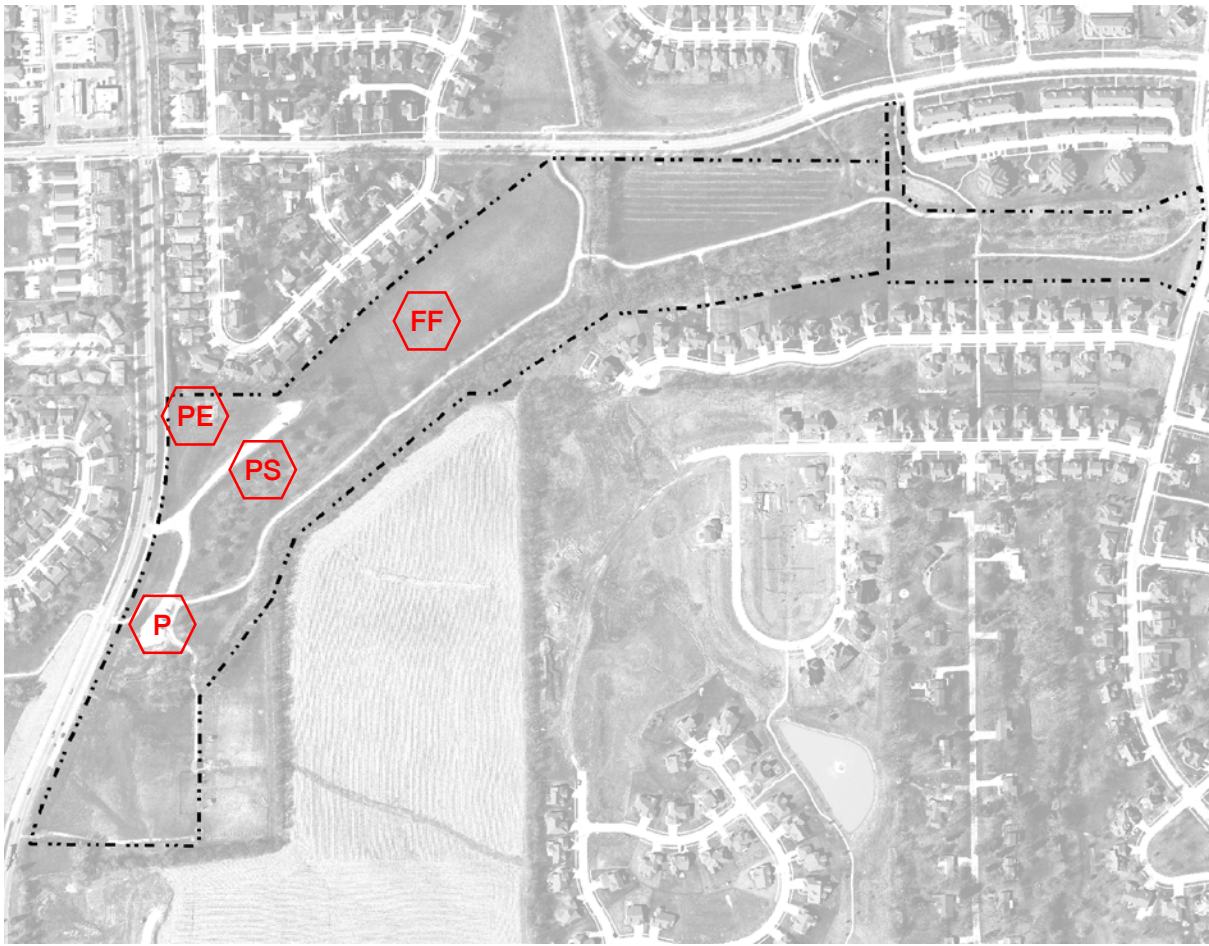


Sand Prairie

Acquired 2004; 40 acres

Notes

Not Developed



Legend

- Picnic Shelter
- Play Equipment
- Football Field
- Parking

Scott Park
640 S. Scott Blvd.

Acquired 1983; 43 acres

Item	Type	Qty	Cond.	Note	ADA?	
Play Equipment	Recreation	1	Good	1989	NA	no accessible route & condition of safety surface
Picnic Shelter	Destination	1	Good	1996	NA	no accessible table; 16' x 20'
Football Field	Sports Facilities	3	Good	1995; flag football & rugby		
Parking	Utility	1	Good	2006; gravel parking lot	NA	lacks accessible level parking

Notes

Playground

Maintenance: Remove and replace existing engineered wood fiber. Provide rubberized surface at points of structure access.

PARK INVENTORY: SCOTT PARK



Play equipment – lacks accessible route



Play equipment – lacks safety surface



Picnic shelter – lacks accessible route to accessible table



Football field

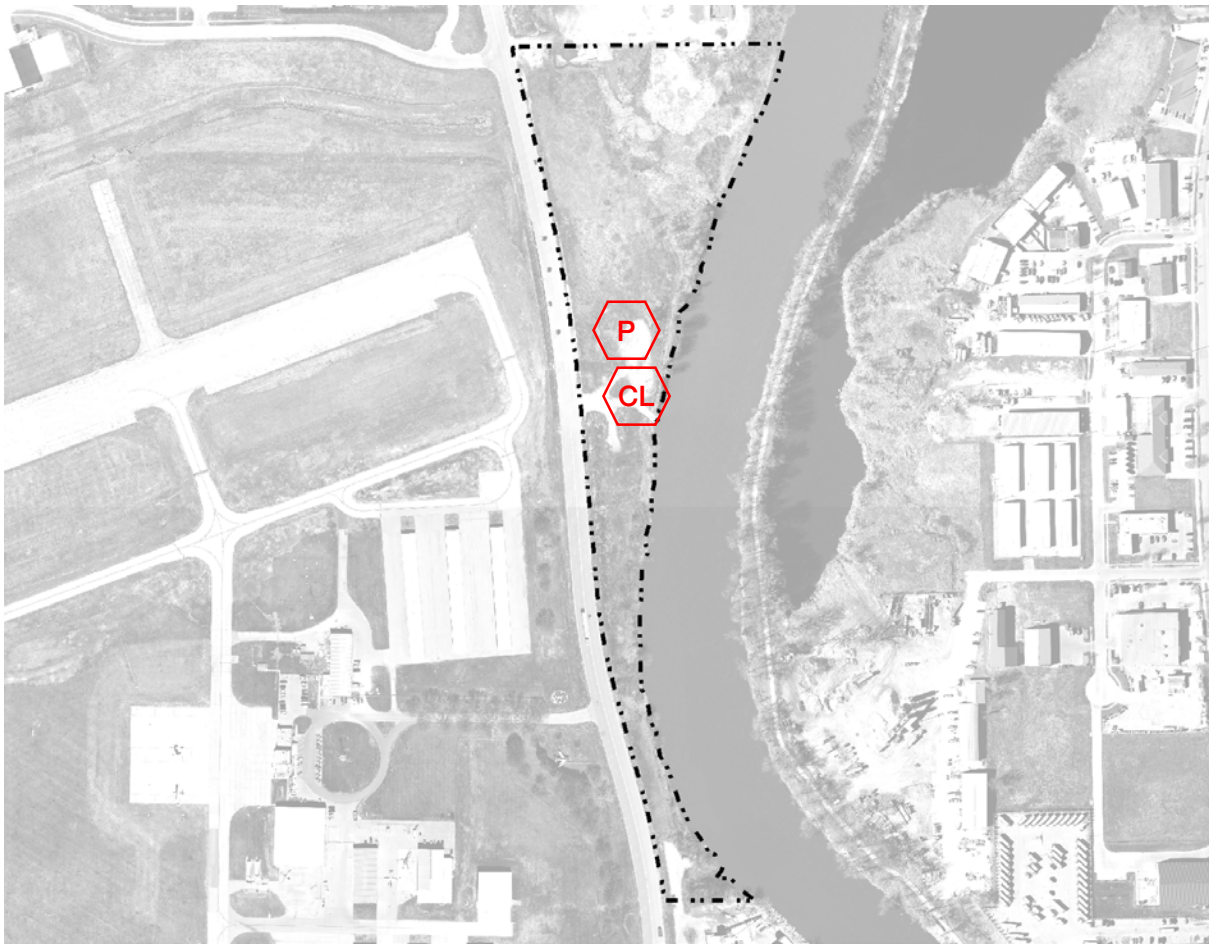


Parking – lacks accessible level parking



Legend

-  Parking
-  Canoe Launch



Sturgis Ferry Park
1700 S. Riverside Drive

Acquired 1972; 37.9 acres

Item	Type	Qty	Cond.	Note	ADA?
Canoe Launch	Environment	1	Good	1982	NA no features to support physical accessibility
Parking	Utility	1	Good	gravel parking lot	NA lacks accessible level parking

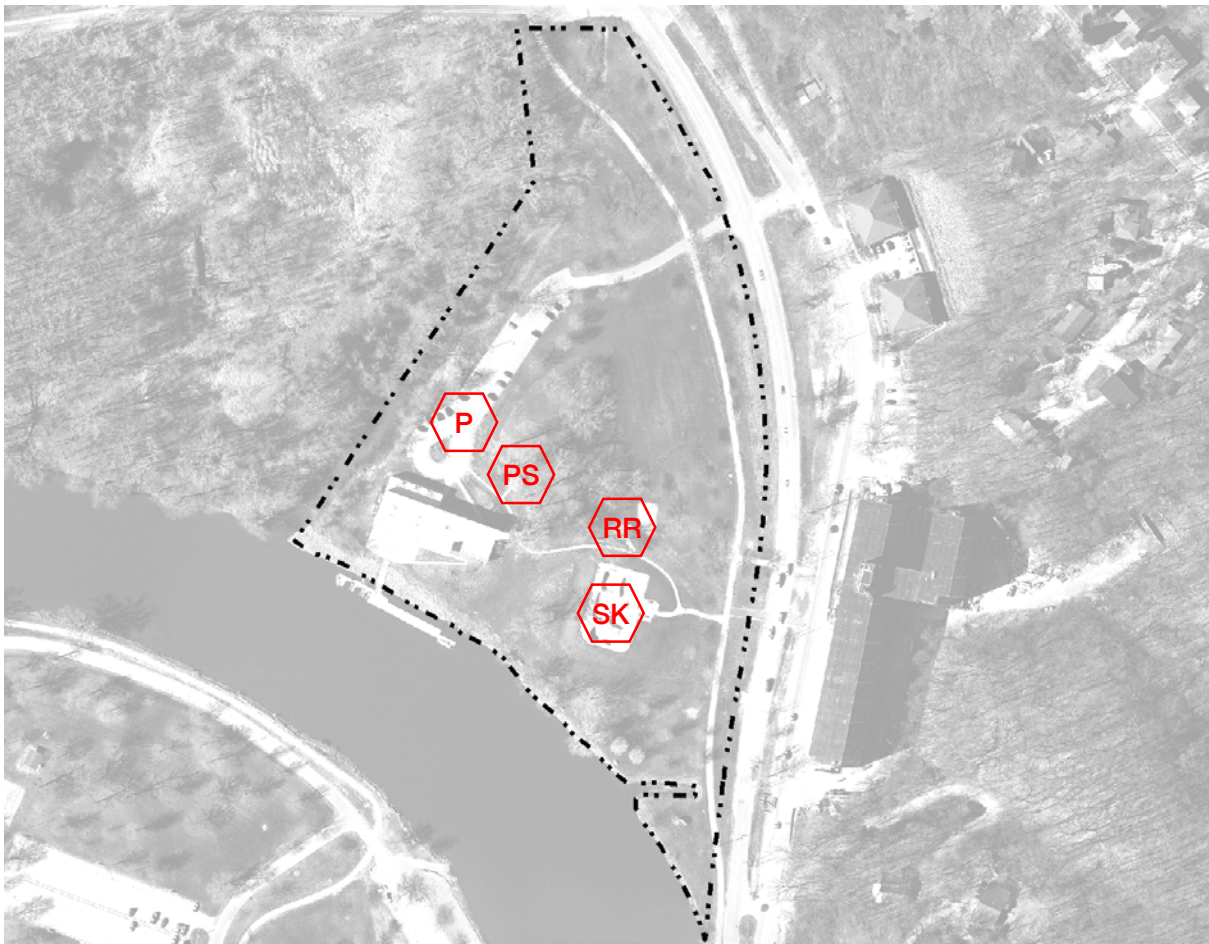
PARK INVENTORY: STURGIS FERRY PARK



Canoe launch



Parking



Legend

-  Picnic Shelter
-  Restroom
-  Skate Park
-  Parking

Terrell Mill Park–Skateboard Park
1201 N. Dubuque St.

Acquired 1966; 17.6 acres

Item	Type	Qty	Cond.	Note	ADA?	
Skate Park	Recreation	1	Good	2008	NA	accessible route to skate park perimeter from parking
Picnic Shelter	Destination	1	Good		NA	lacks accessible table; 24' hexagon
Restroom	Destination	1	Good	appears fairly new	YES	closed for season; exterior appears accessible
Parking	Utility		Good			

PARK INVENTORY: TERRELL MILL PARK



Skate Park



Skate Park



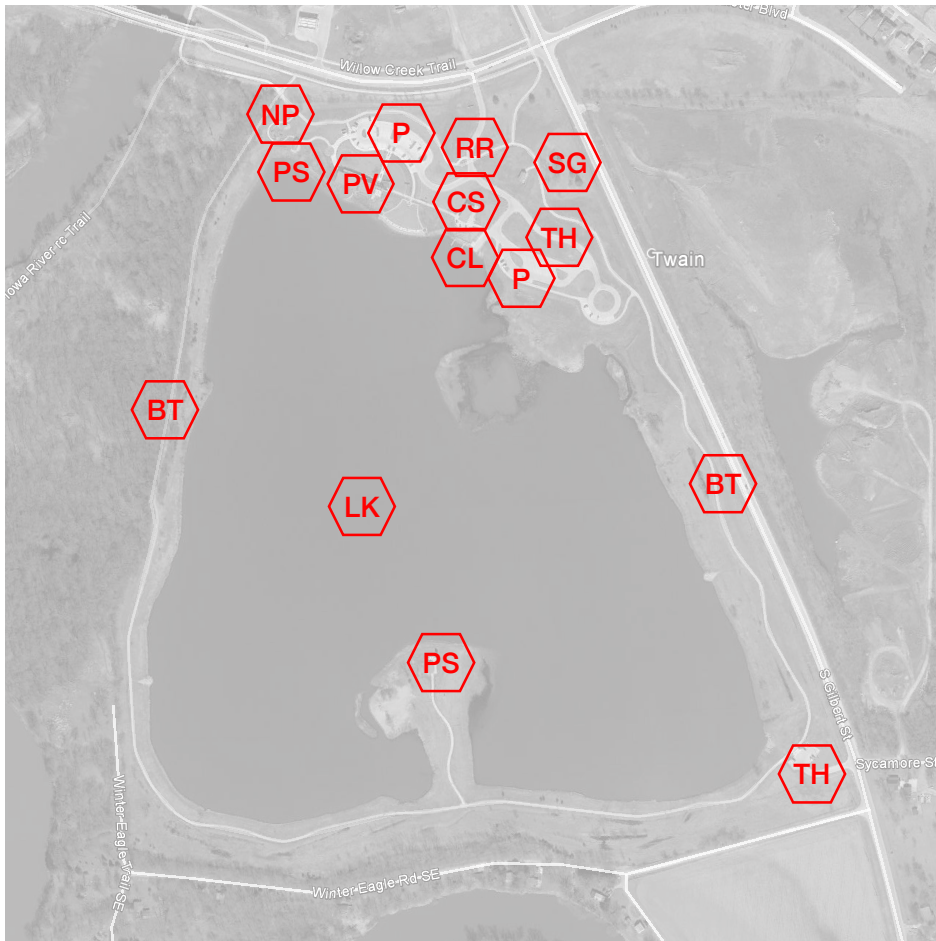
Picnic shelter – lacks accessible route



Restroom



Parking



- Parking
- Picnic Shelter
- Pavilion (150+ cap.)
- Bike Trail
- Trailhead
- Lake
- Natural Play
- Signage
- Concession; Canoe Rental
- Canoe Launch

Terry Trueblood Recreation Area
579 McCollister Blvd.

Acquired 2006; 188.5 acres

Item	Type	Qty	Cond.	Note	ADA?
Walk-Run Trail			Good		YES
Fishing			Good	(unmarked)	YES
Bird Watching			Good	(unmarked)	YES
Picnic Shelter		3	Good	2014	YES
Hiking			Good		
Ice Skating (outdoor)			Fair	Based on the weather	
Pavilion / Park Lodge			Good	2014; in good condition	YES
Lake					
Signage			Good	good	
Restroom	Destination	1	Good	2014	YES
Trail Head	Destination	2	Good		YES
Concession Stand	Destination	1	Good	2014	YES
Natural Play	Recreation	1	Good		YES portions accessible; additional mulch needed
Parking	Utility		Good		YES
Signage	Utility	1	Good		

PARK INVENTORY: TERRY TRUEBLOOD RECREATION AREA



Access – Accessible parking adjacent to facilities



Access – Trail access around lake



Signage –



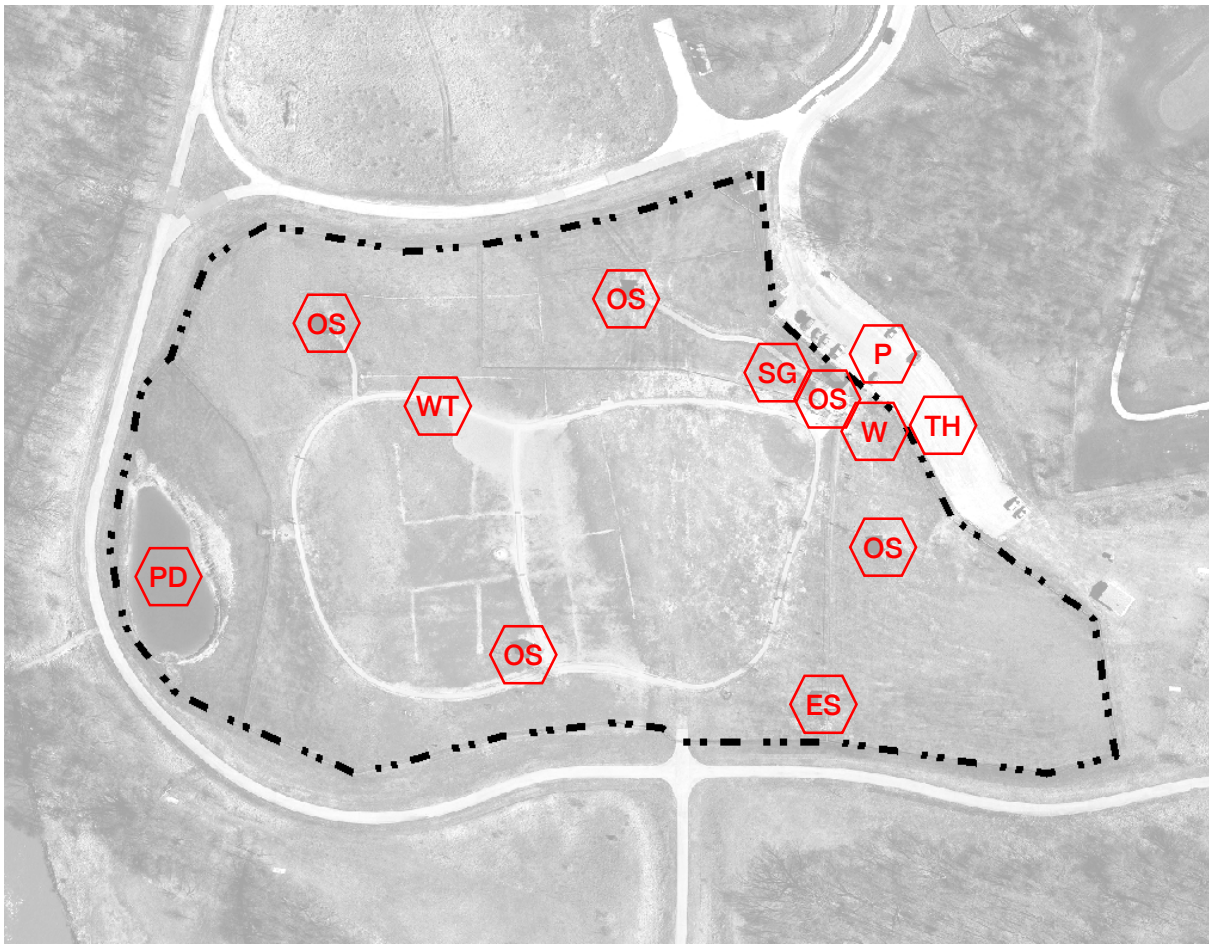
Natural Play – Access to amenities



Access – Restrooms



Access – Benches



Legend

- Parking
- Open Shelter
- Walking Trail
- Trailhead
- Pond
- Equipment Storage

Thornberry Dog Park
1867 Foster Rd.

Acquired 2005

Item	Type	Qty	Cond.	Note	ADA?
Picnic Shelter	Destination	1	Good		YES
Parking	Utility	1	Good		YES
Pond					
Open Shelter	Destination	3	Good		YES
Open Shelter	Destination	1	Good		NA
Equipment Shed	Destination	1	Good		NA no accessible route;
Park Sign	Wayfinding	1	Poor	Wood structure with engraved text	

Notes

Irrigation 2006



Green line = chain-link fence

PARK INVENTORY: PENINSULA PARK THORNBERRY OFF-LEASH DOG PARK



Park Identification Sign –



Access – Accessible parking directly in front of entrance



Access – Gate access



Shelters – Limited access to shade structures



Access – Limited access to information board



Access – Interior access to pond and pier.



Legend

-  **Play Equipment**
-  **Splash Pad**

Tower Court Park
1124 Tower Ct.

Acquired 1972; 0.4 acres

Item	Type	Qty	Cond.	Note	ADA?
Play Equipment	Recreation	1	Good	2015; about 3 years old	NA no accessible route & condition of safety surface
Splash Pad	Recreation	1	Good	2015; about 1 year old	NA no accessible route

Notes

Playground

Maintenance: Remove and replace existing engineered wood fiber. Provide rubberized surface at points of structure access.

PARK INVENTORY: TOWER COURT PARK



Play equipment – lacks accessible route and safety surface



Splash pad



Legend

-  Play Equipment
-  Signage

Villa Park
424 MacBride Dr.

Acquired 1970; 6.5 acres

Item	Type	Qty	Cond.	Note	ADA?
Play Equipment	Recreation	1	Good		NA No accessible route

Notes

Playground

- Development: Correct height differential with wooden curb barrier by removing and replacing or shaving flush.
- Development: provide accessible route from public sidewalk to Play Equipment.
- Maintenance: Remove and replace existing engineered wood fiber. At points of structure access, place rubberized surface

PARK INVENTORY: VILLA PARK



Entrance sign



Open field



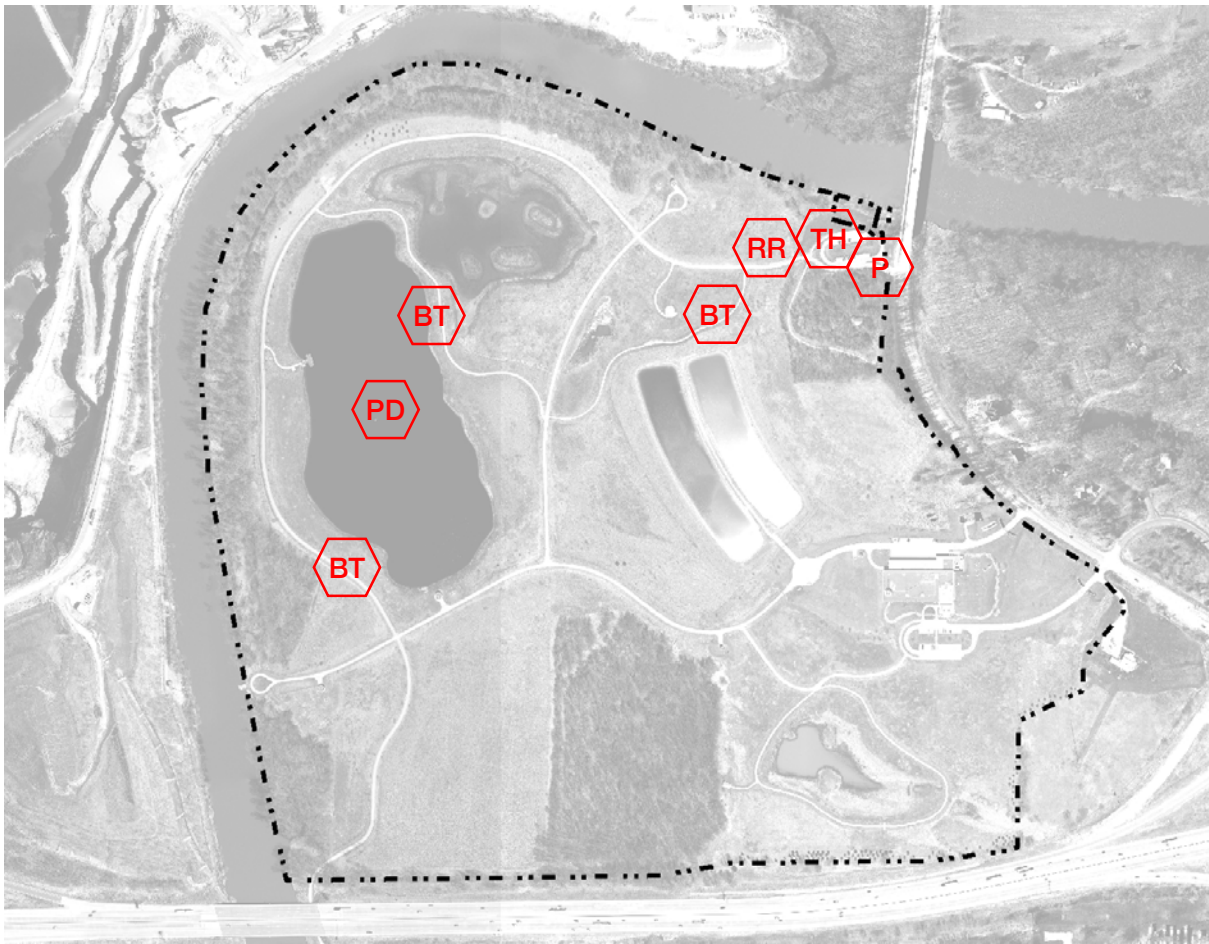
Open field – slopes impede on accessible route through park



Playground – no accessible route – wood prohibits access



Playground – resilient surface – needs replaced



Legend

- Parking
- Bike Trail
- Trailhead
- Pond
- Portable Restroom

Waterworks Prairie Park
2875 N. Dubuque St.

Acquired 2003

Item	Type	Qty	Cond.	Note	ADA?
Trailhead	Destination	1	Good	2003	YES
Bike Trail	Recreation	1	Fair	2003	YES
Pond				2003	
Signage	Wayfinding	1	Poor	2003	
Portable Restroom	Destination	1	Good		YES

Notes:

Playground

Development: Provide access to swings
Maintenance: At points of structure access, place rubberized surface

Interior Pathways

Development: Plan and construct pathways to park destinations including playground, shelter and basketball court.

Additional Facilities History: Shelter 2003 20' x 34'
Fishing dock 2009
Butler House 1998

PARK INVENTORY: WATERWORKS PRAIRIE PARK



Park Identification Sign – Needs upgrading



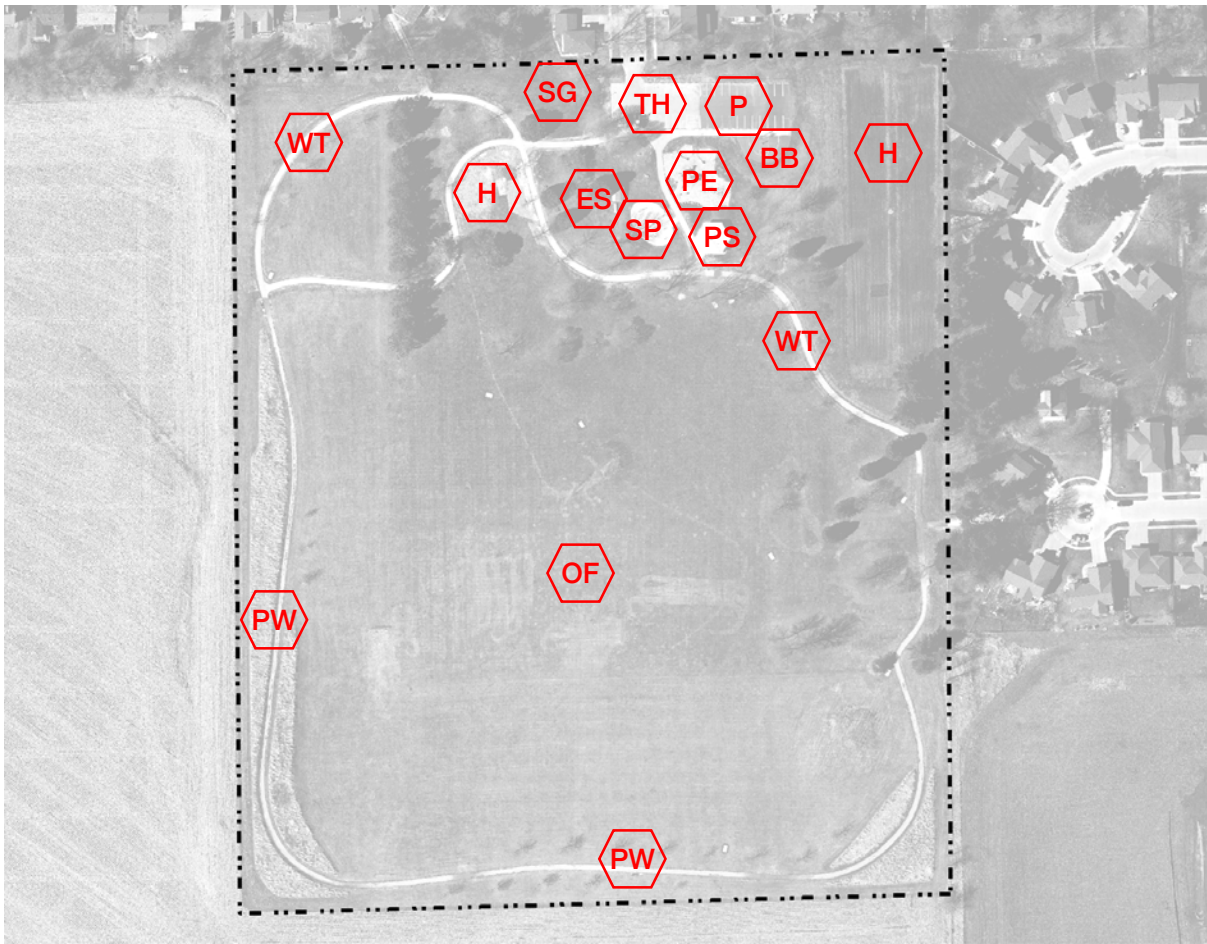
Restroom – Primitive restrooms are available



Access – Majority of trails are accessible. Some are mowed paths.



Access – majority of park is accessible by paved trails.



Legend

- P Parking
- PS Picnic Shelter
- PE Play Equipment
- PW Pathway
- WT Walking Trail
- BB Basketball Court
- SP Splash Pad
- OF Open Field
- H Horticulture
- TH Trailhead
- SG Signage

Wetherby Park
2400 Taylor Dr.

Acquired 1975, 1996; 24.3 acres

Item	Type	Qty	Cond.	Note	ADA?
Walking Trail	Recreation	1	Good	New	YES
Splash Pad	Recreation	1	Good	2010	YES
Picnic Shelter	Destination	1	Good	1979; Shelter #1	YES lacks accessible picnic tables; 40' hexagon
Water	Utility	1	Fair		NA no accessible route
Restrooms	Utility			1979	YES
Open Field	Recreation				YES
Play Equipment	Recreation	1	Good	2010	YES maintain resilient surface
Softball Field	Recreation				YES
Soccer Field	Recreation				YES
Basketball 1/2 Court	Recreation	1	Fair		YES
Pathway	Recreation	1	Good	Mowed Pathway	
Nature Study	Recreation	2	Good	Unique Horticulture (edible)	YES
Trailhead	Recreation				YES
Parking	Utility	1	Good	Quantity (?)	YES
Community Gardens	Recreation				YES
9-hole Disc Golf Course	Recreation	1	Good		NA no accessible route
Park Sign	Wayfinding	1	Fair	Stone with Art Lettering	

Notes:

2017 Sport Court – Basketball & Futbol

PARK INVENTORY: WETHERBY PARK



Park Identification Sign –



Access – Accessible parking directly in front of entrance



Access – Trails connect



Gardens – Trail access to edible garden



Access



Access – most benches are accessible by trail

PARK INVENTORY: WETHERBY PARK



Shelter – Is accessible



Access – Good pathway, sidewalk and trail connection



Access – Maintain resilient surface at playground



Playground – Limited access to shade structures



Splash Pad – Good access



Sports Court – to be completed in 2018



Legend

-  Pathway
-  Pond
-  Signage

Whispering Meadows Wetlands
2575 Lakeside Dr.

Acquired 1991; 17.8 acres

Item	Type	Qty	Cond.	Note	ADA?
Walking Trail	Recreation	1	Good	New	No no accessible route
Pond					
Park Sign	Wayfinding	1	Poor	Wood structure with engraved text	

Notes

PARK INVENTORY: WHISPERING MEADOW WETLANDS



Park Identification Sign – Schedule to upgrade



Access – pathway near a bench with view to the wetland

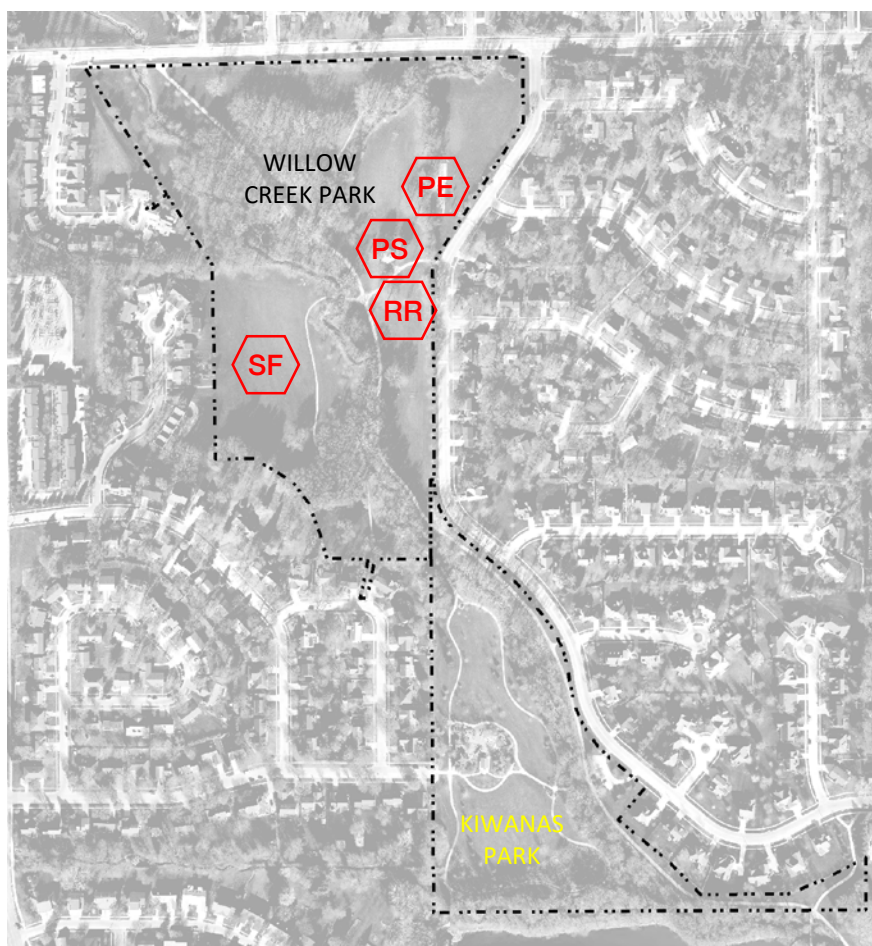


Access – nature trail throughout most of the wetland park



PARK INVENTORY: WHISPERING MEADOW WETLANDS





Legend

-  Picnic Shelter
-  Play Equipment
-  Restroom
-  Soccer Field

Willow Creek Park
1117 Teg Dr.

Acquired 1972, 1975; 27.2 acres

Item	Type	Qty	Cond.	Note	ADA?	
Play Equipment	Recreation	1	Fair	1997	NA	no accessible route & condition of safety surface
Picnic Shelter	Destination	1	Fair	1979; includes restrooms	NA	lacks handicapped-accessible fixtures; 40' hexagon
Soccer Field	Sports Facilities	2	Good			
Restroom	Destination	1	Poor	at picnic shelter	NA	lacks handicapped-accessible fixtures

Notes

Foot bridge 2004

Playground

Maintenance: Remove and replace existing engineered wood fiber. Provide rubberized surface at points of structure access.

PARK INVENTORY: WILLOW CREEK PARK



Play equipment – lacks accessible route and safety surface





Picnic shelter – lacks accessible restroom components



Soccer field



Legend

-  Pathway
-  Pond

Windsor Ridge Park
1100 Arlington Dr.

Acquired 1999; 23 acres

Item	Type	Qty	Cond.	Note	ADA?
Pathway	Recreation	6	Good	2003; concrete sidewalk trails	NA route exceeds 12% in some locations
Pond	Environment	1	Good		

PARK INVENTORY: WINDSOR RIDGE PARK



Pathway – route exceeds 5% in some locations



Pond