



City Park Adventure Playground

Public Hearing

April 23, 2019

Juli Seydell Johnson, Director of Parks & Recreation



CITY PARK ROADS

Playground Area

OAKRIDGE

HOLT

TEMPLIN

PARK

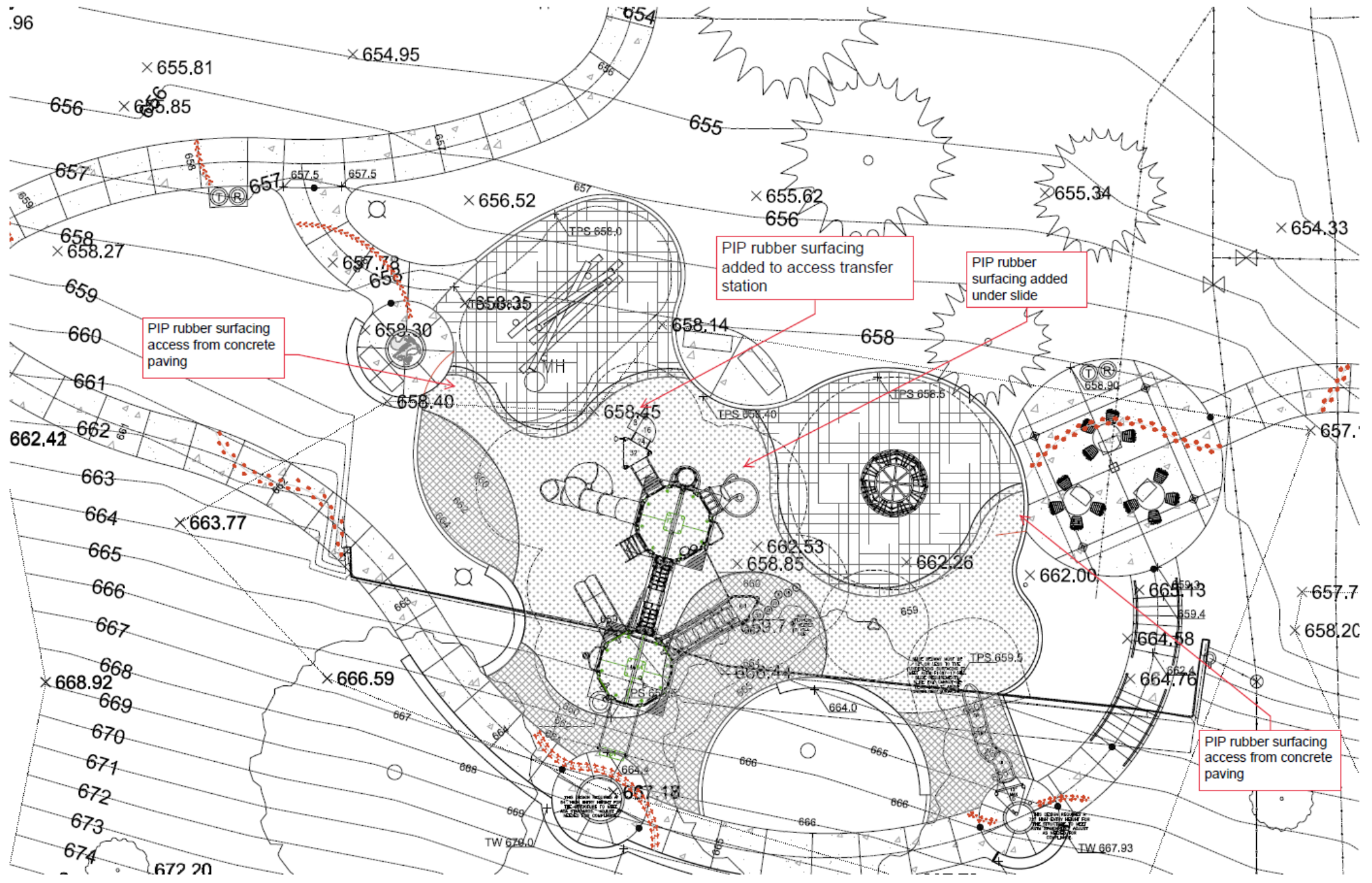
RIVERSIDE

GROVE

CITY PARK ROADS

CITY PARK ROADS





PIP rubber surfacing
access from concrete
paving

PIP rubber surfacing
added to access transfer
station

PIP rubber
surfacing added
under slide

PIP rubber surfacing
access from concrete
paving

Lower City Park Adventure Play

Iowa City, IA January 29, 2019 1132360-01-03-01



Custom products are shown as conceptual only. *Custom product manufacturing time for this project will be approximately 28 weeks from the time of LSI order acceptance.

©2019 Landscape Structures. All Rights Reserved.



FOR A BETTER TOMORROW
WE PLAY TODAY

shapedbyplay.com

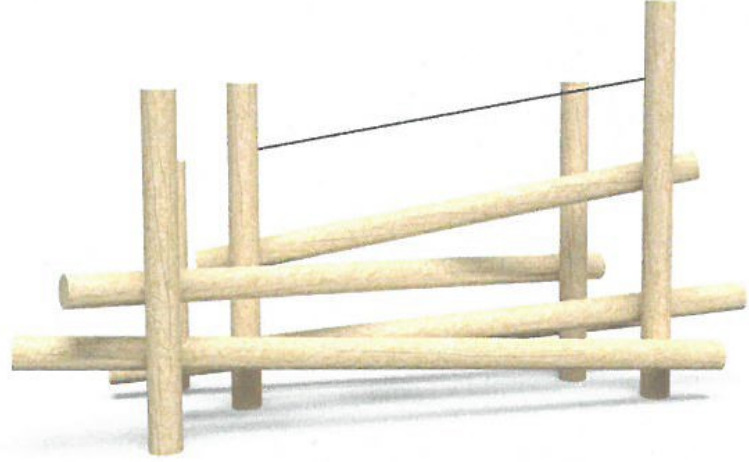


Proudly presented by:

Rick Ertz



outdoor recreation products



Designed for Adventure and Inclusivity

- Large trees remain for shade throughout.
- Natural hillside allows for play experiences in addition to accessing the equipment.
- Hillside location adds “lookout” transfer and seating locations at various play points.
- Areas of Poured in Place, rubberized surface improves access to slides and large play structure.
- “Quiet area” of timber climbing equipment separate from larger structure.
- Accessible path connecting bottom to top of play area for access to hillside slide and play structure.
- Spinning equipment allows for a variety of users.

City Park Adventure Play Timeline

- Public Hearing April 23, 2019
- Bids Due May 14, 2019
- Award Contract May 21, 2019
- Start Construction June 3, 2019
- Substantial Completion August 28, 2019