



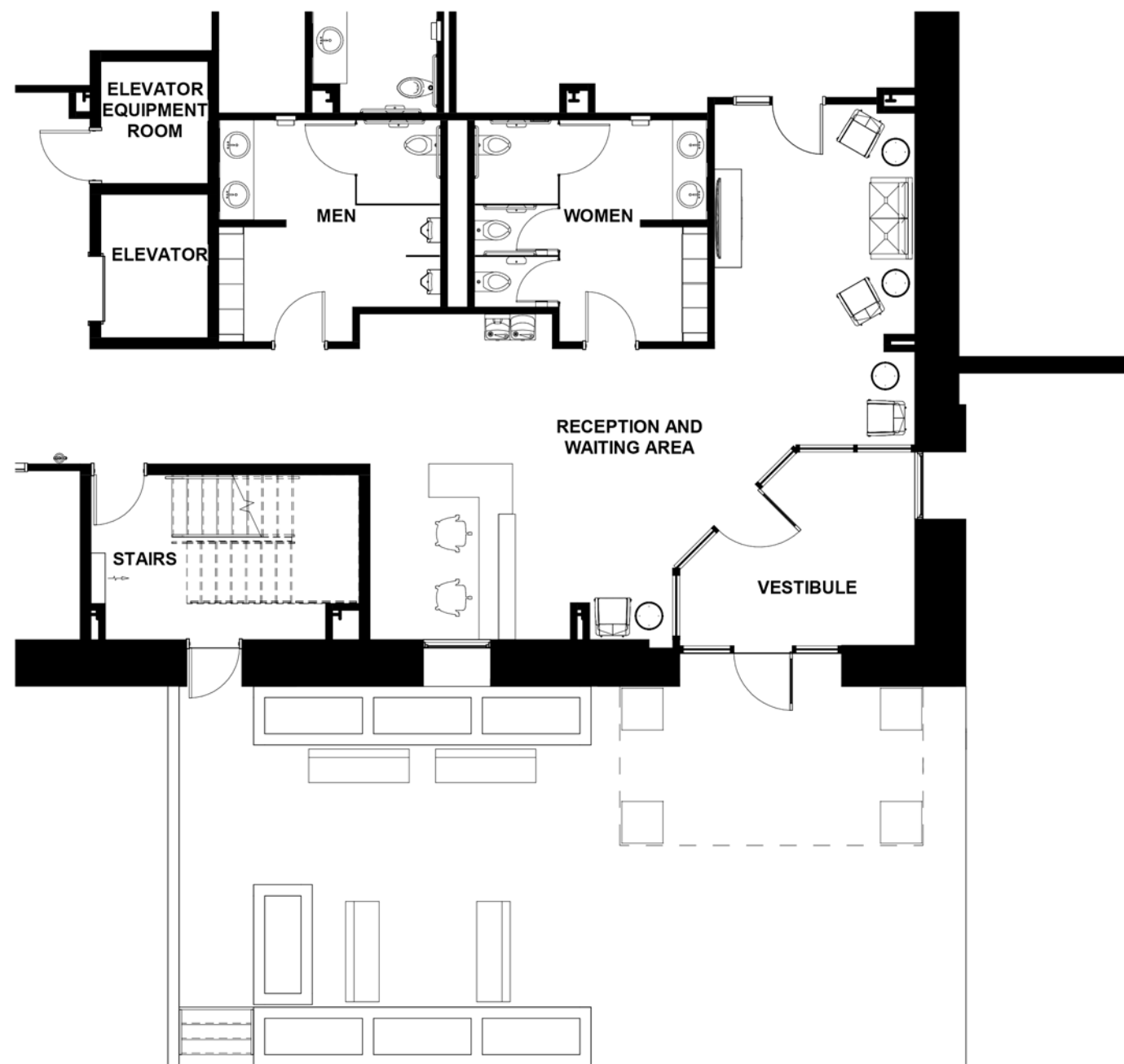
28 S Linn Street Iowa City, Iowa

23 October 2020

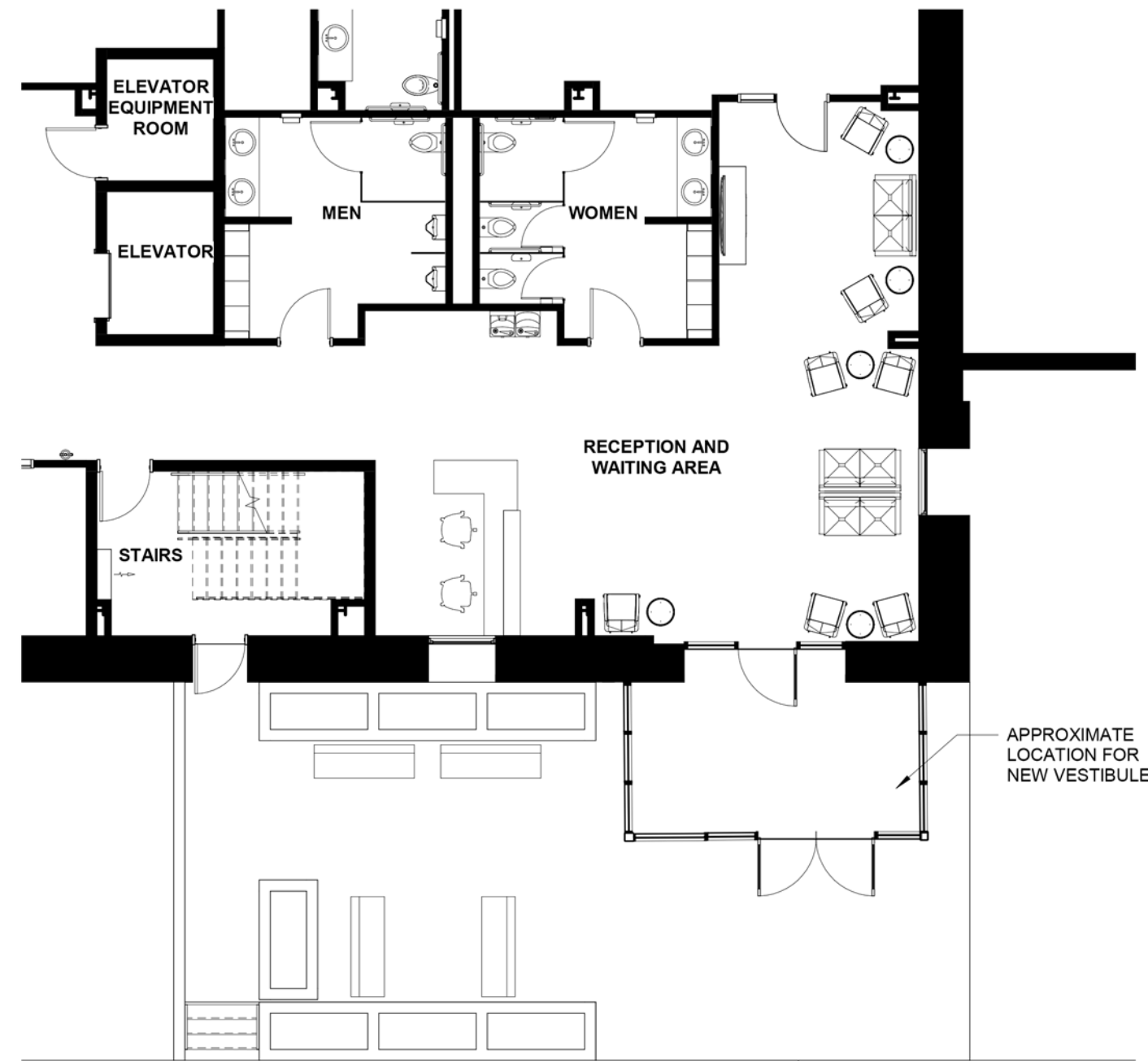
Rohrbach Associates PC Architects

The Center South Entrance Concept Design Study

**Vestibule Plans (for reference)
Views of existing
Views of design options**



Option 1



Option 3

0 4 8 16 Ft.



Vestibule Plan

The Center
South Entrance Concept Design Study

Rohrbach Associates PC Architects



View from South Existing

The existing south side of the building includes the ADA entrance. The entrance is understated and is emphasized by an arched fabric canopy. This side also includes the exit for the required fire stair.

The Center South Entrance Concept Design Study

Rohrbach Associates PC Architects



Aerial View Existing

The aerial view shows the offset pavement leading to the existing entrance. The fire exit terminates in the south lawn of The Center.

The Center South Entrance Concept Design Study

Rohrbach Associates PC Architects



View from South Option 1

This option carries through some of the architectural language in the existing building and is sensitive to its style. This new addition helps to define the ADA access to this building as a prominent feature. It helps reinforce the idea of a more universal design approach.

The Center South Entrance Concept Design Study

Rohrbach Associates PC Architects



View from Southeast Option 1

The eye-level view shows not only how this design solution emphasizes the modified entrance but also shows that this solution utilizes a vestibule that is within the existing footprint of the building. This addition is added to the south face but does not enclose the area.

The Center
South Entrance Concept Design Study

Rohrbach Associates PC Architects



View from Southwest **Option 1**

The view from the intersection of Washington and Linn shows the new addition as a more prominent entrance while still being sensitive to the existing building.

The Center **South Entrance Concept Design Study**

Rohrbach Associates PC Architects



Aerial View Option 1

The design includes modification to the south pavement area to include an outdoor sitting, gathering space. The area in front of the entrance is clear and unobstructed and the sitting area is defined by perimeter planters. This design solution ties the fire exit directly to the pavement.

The Center South Entrance Concept Design Study

Rohrbach Associates PC Architects

Option 2 omitted for Historic
Preservation Building concerns.

The Center
South Entrance Concept Design Study

Rohrbach Associates PC Architects



View from South Option 3

This design option respects the existing architecture by primarily leaving it alone. The new addition is a modern approach that is a steel frame and glass solution that allows one to view the existing face of the building through the transparent glass walls. This option brings the vestibule to the outside of the existing footprint and allows for more interior lobby layout options.

The Center South Entrance Concept Design Study

Rohrbach Associates PC Architects



View from Southeast Option 3

This view shows how the new vestibule has a transparent approach. The steel extends past the face of the front entry doors allowing for an overhang that provides protection while entering.

The Center South Entrance Concept Design Study

Rohrbach Associates PC Architects



View from Southwest **Option 3**

The view from the intersection of Washington and Linn shows how this transparent entry addition can still help define a new entrance and allow it to be a bright, sun filled solution.

The Center **South Entrance Concept Design Study**

Rohrbach Associates PC Architects



Aerial View Option 3

This design option also includes modification to the south pavement area to include an outdoor sitting, gathering space. This view shows the extent of the vestibule overhangs and framing which align with the vertical stone pilasters of the existing building.

The Center
South Entrance Concept Design Study

Rohrbach Associates PC Architects



Aerial View

Vestibule Plan

The Center
South Entrance Concept Design Study

Rohrbach Associates PC Architects