

# Iowa City Transit Facility – Existing Conditions

## Ground Subsidence



*Asphalt patching, persistent ponding of water, wetland formation, potholes, uneven surfaces are common and cause hazards for vehicles and pedestrians.*



*Annual asphalt patching required to ensure buses have an adequate slope to enter/exit the building.*



### **Methane Abatement**



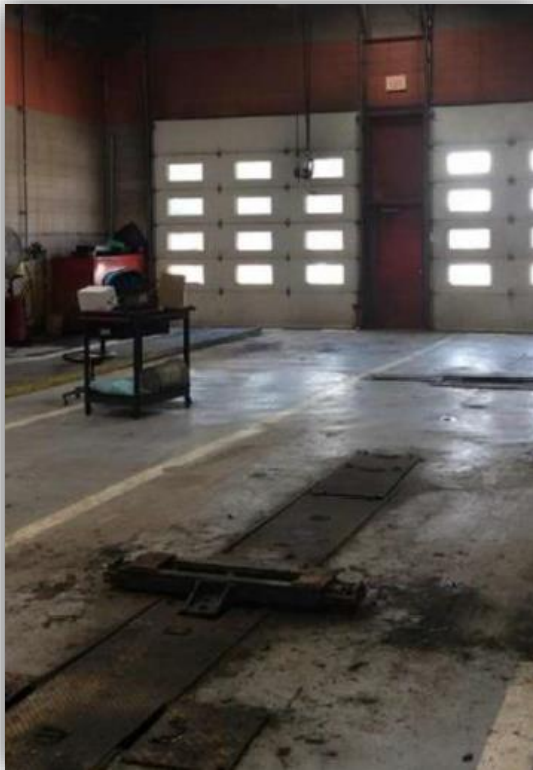
*The silver building houses methane abatement equipment. There is also extensive equipment below the facility and methane monitoring equipment located throughout the building.*

## Outdated Facilities Deteriorating

*Lack of storage requires repurposing of hallway.*

*Outdated furnishings and built-in equipment reaching the end of their useful life.*





*Lack of storage requires repurposing of hallway.*

*Outdated furnishings have reached the end of their useful life.*

## ADA Accessibility Issues



*The once-level pedestrian approaches are now considerably sloped, are no longer ADA compliant, and require asphalt patching.*

*The front entrance approach has sunk at least 9 inches, or an average of a quarter inch per year.*



## Pest Infestation



*Animals, such as this woodchuck, have taken up residence under the building which causes subsequent flea and other pest invasions.*