

PEDESTRIAN MALL IMPROVEMENTS . PRESENTATION TO CITY COUNCIL

January 16, 2018

PLANNING HISTORY

EXISTING CONDITIONS

SUMMARY OF DESIGN

- Utility Improvements
- Tree Mitigation Plan
- Layers of Lighting
- Full Paving Replacement

SECONDARY DESTINATIONS

- Permanent Stage Canopy
- Black Hawk Mini Park
- Clinton Street Entry

CONSTRUCTION PHASING

SUMMARY OF PROJECT COSTS

NEXT STEPS

Q + A



PLANNING HISTORY





2013 – 2014 IOWA CITY DOWNTOWN AND PEDESTRIAN MALL STREETScape PLAN UPDATE

- STAKEHOLDER INPUT [ICDD, SOTA, U OF I]
- THREE PUBLIC MEETINGS
- ONGOING ONLINE FEEDBACK VIA INSPIREDOWNTOWNIC.COM
- EVENT MONITORING
- ADOPTED BY THE CITY COUNCIL IN 2014

2014 SCHEMATIC DESIGN PHASE

- DUBUQUE STREET, WASHINGTON STREET, PEDESTRIAN MALL
- PUBLIC MEETING



2016-2018 DESIGN DEVELOPMENT AND CONSTRUCTION DOCUMENTATION

- PRE-DESIGN AND INFORMATION GATHERING WORKSHOPS
- TWO PUBLIC MEETINGS
- TWO OPEN HOUSES WITH BUSINESS + PROPERTY OWNERS
- INDIVIDUAL BUSINESS + PROPERTY OWNER CONSULTS TO MITIGATE CONSTRUCTION IMPACTS

PLANNING HISTORY

PEDESTRIAN MALL IMPROVEMENTS

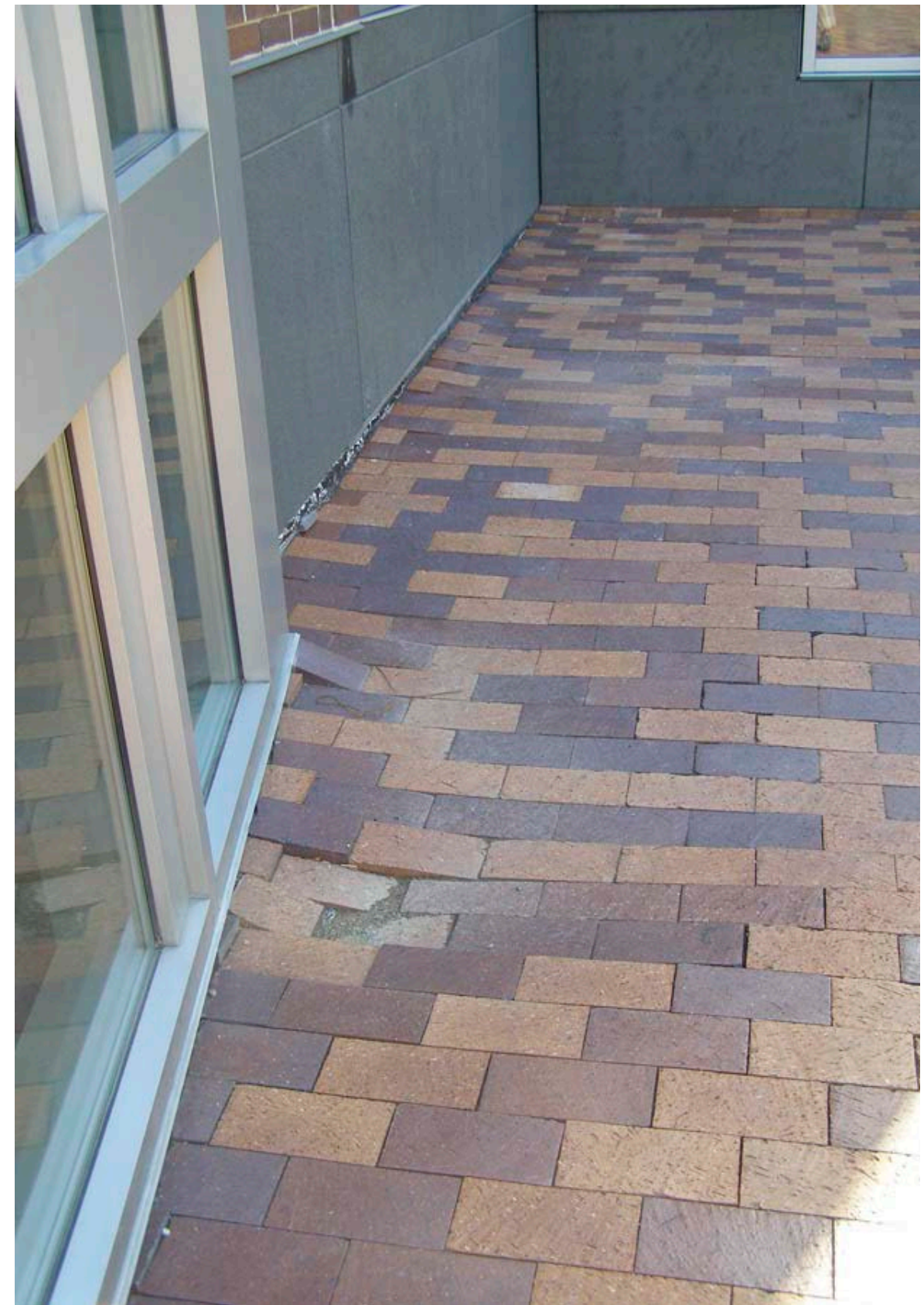
EXISTING CONDITIONS



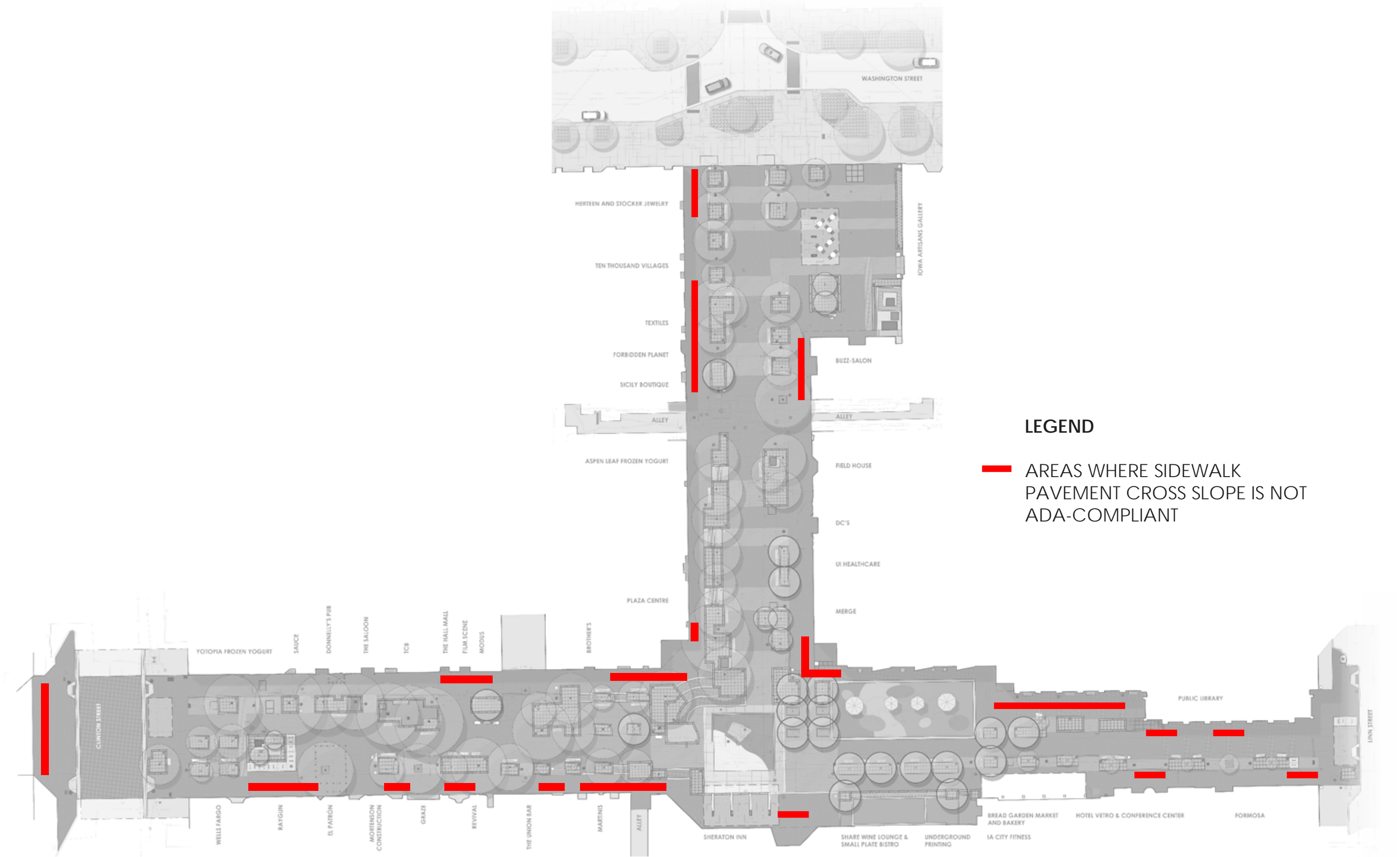


EXISTING CONDITIONS

PEDESTRIAN MALL IMPROVEMENTS



EXISTING CONDITIONS
PEDESTRIAN MALL IMPROVEMENTS



EXISTING CONDITIONS

PEDESTRIAN MALL IMPROVEMENTS



EXISTING CONDITIONS
PEDESTRIAN MALL IMPROVEMENTS



EXISTING CONDITIONS
PEDESTRIAN MALL IMPROVEMENTS

SUMMARY OF DESIGN

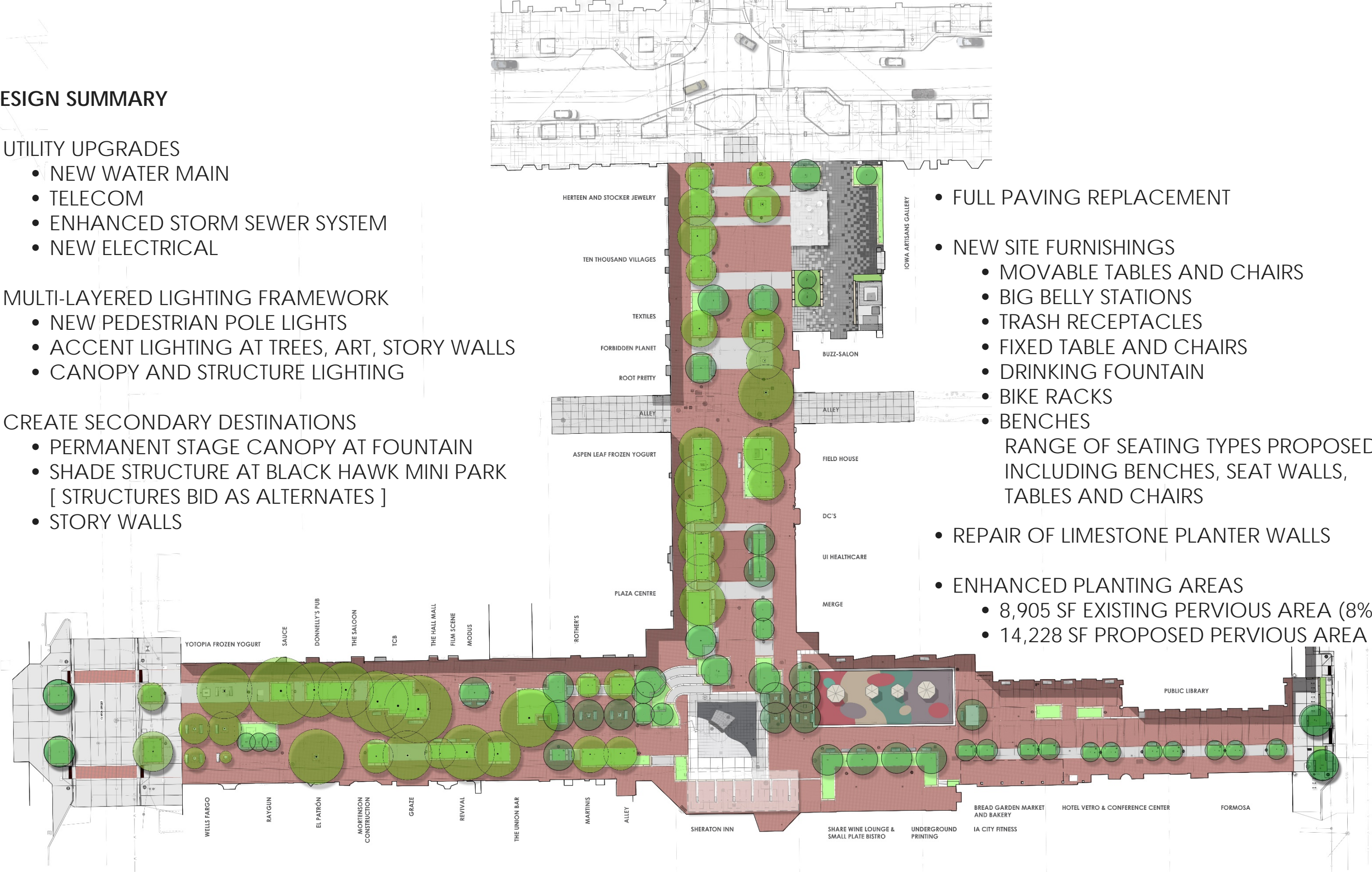
- Maintain Warm Character
- Replace Aging Infrastructure
- Tree Mitigation Plan
- Layers of Lighting
- Full Paving Replacement
- New Site Furnishings



DESIGN SUMMARY

- UTILITY UPGRADES
 - NEW WATER MAIN
 - TELECOM
 - ENHANCED STORM SEWER SYSTEM
 - NEW ELECTRICAL
- MULTI-LAYERED LIGHTING FRAMEWORK
 - NEW PEDESTRIAN POLE LIGHTS
 - ACCENT LIGHTING AT TREES, ART, STORY WALLS
 - CANOPY AND STRUCTURE LIGHTING
- CREATE SECONDARY DESTINATIONS
 - PERMANENT STAGE CANOPY AT FOUNTAIN
 - SHADE STRUCTURE AT BLACK HAWK MINI PARK [STRUCTURES BID AS ALTERNATES]
 - STORY WALLS

- FULL PAVING REPLACEMENT
- NEW SITE FURNISHINGS
 - MOVABLE TABLES AND CHAIRS
 - BIG BELLY STATIONS
 - TRASH RECEPTACLES
 - FIXED TABLE AND CHAIRS
 - DRINKING FOUNTAIN
 - BIKE RACKS
 - BENCHES
- RANGE OF SEATING TYPES PROPOSED INCLUDING BENCHES, SEAT WALLS, TABLES AND CHAIRS
- REPAIR OF LIMESTONE PLANTER WALLS
- ENHANCED PLANTING AREAS
 - 8,905 SF EXISTING PERVIOUS AREA (8%)
 - 14,228 SF PROPOSED PERVIOUS AREA (13%)



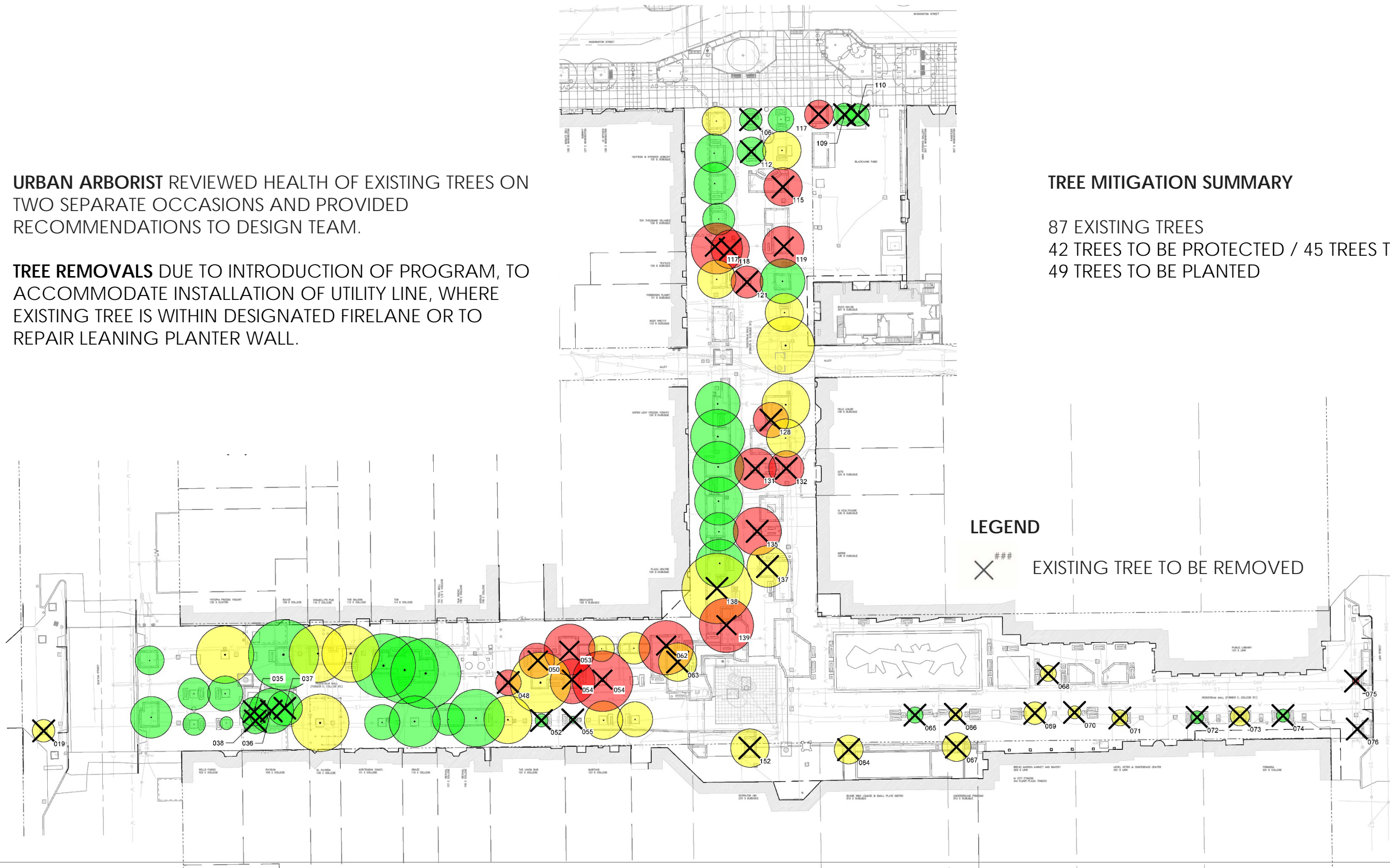
DESIGN SUMMARY PEDESTRIAN MALL IMPROVEMENTS

URBAN ARBORIST REVIEWED HEALTH OF EXISTING TREES ON TWO SEPARATE OCCASIONS AND PROVIDED RECOMMENDATIONS TO DESIGN TEAM.

TREE REMOVALS DUE TO INTRODUCTION OF PROGRAM, TO ACCOMMODATE INSTALLATION OF UTILITY LINE, WHERE EXISTING TREE IS WITHIN DESIGNATED FIRELANE OR TO REPAIR LEANING PLANTER WALL.

TREE MITIGATION SUMMARY

87 EXISTING TREES
42 TREES TO BE PROTECTED / 45 TREES TO BE REMOVED
49 TREES TO BE PLANTED

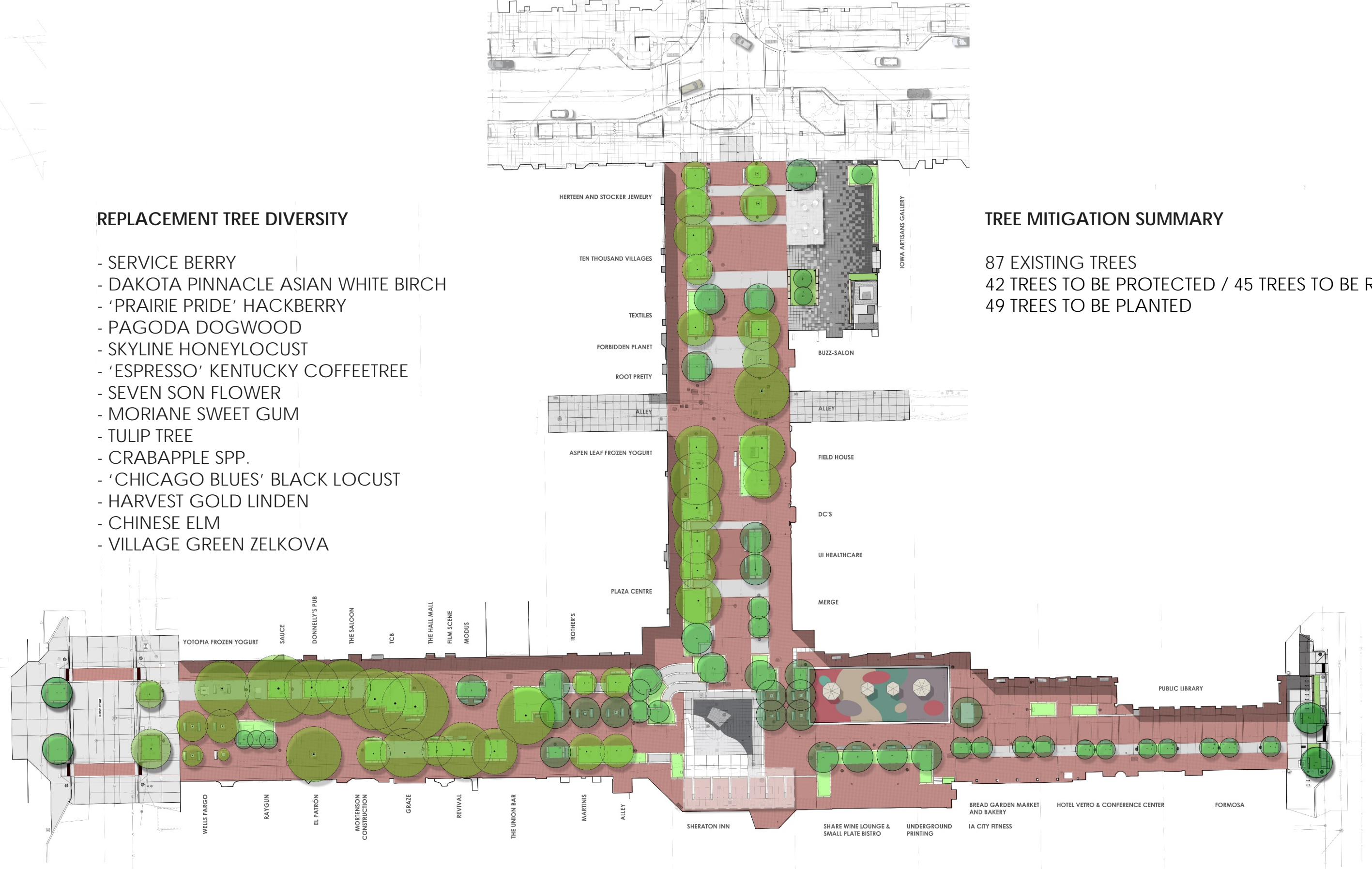


REPLACEMENT TREE DIVERSITY

- SERVICE BERRY
- DAKOTA PINNACLE ASIAN WHITE BIRCH
- 'PRAIRIE PRIDE' HACKBERRY
- PAGODA DOGWOOD
- SKYLINE HONEYLOCUST
- 'ESPRESSO' KENTUCKY COFFEETREE
- SEVEN SON FLOWER
- MORIANE SWEET GUM
- TULIP TREE
- CRABAPPLE SPP.
- 'CHICAGO BLUES' BLACK LOCUST
- HARVEST GOLD LINDEN
- CHINESE ELM
- VILLAGE GREEN ZELKOVA

TREE MITIGATION SUMMARY

87 EXISTING TREES
 42 TREES TO BE PROTECTED / 45 TREES TO BE REMOVED
 49 TREES TO BE PLANTED



TREE MITIGATION PEDESTRIAN MALL IMPROVEMENTS



POWER PEDESTALS IN PLANTING AREAS



● BEGA 84 120



LAYERS OF LIGHTING

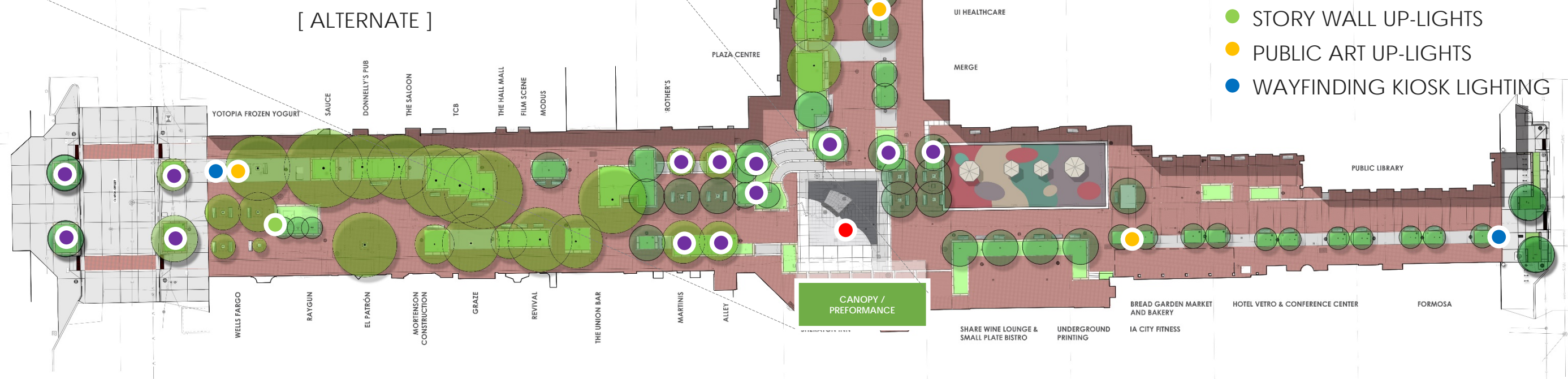
PEDESTRIAN MALL IMPROVEMENTS



● INTERNAL FOUNTAIN LIGHTING



CANOPY / PERFORMANCE LIGHTING
[ALTERNATE]



- TREE UP-LIGHTS
- STORY WALL UP-LIGHTS
- PUBLIC ART UP-LIGHTS
- WAYFINDING KIOSK LIGHTING

LAYERS OF LIGHTING PEDESTRIAN MALL IMPROVEMENTS

EXISTING VS. PROPOSED COUNTS

85 EXISTING BENCHES - 74 PROPOSED BENCHES (24 EXTENDED LENGTH)
DESIGN PROPOSES A RANGE OF SEATING TYPES INCLUDING SEAT WALLS,
AND TABLES AND CHAIRS (1 FIXED AND 6 MOVABLE TABLES AND CHAIRS)



NEOLIVIANO BENCH



PLAINWELL BENCH



BENCHMARK BENCH



DUMOR TABLE 78



FERMOB MOVABLE TABLE + CHAIRS

SITE FURNISHINGS
PEDESTRIAN MALL IMPROVEMENTS



WAYFINDING KIOSK
[2 PROPOSED]



TRASH RECEPTACLE
SCARBOROUGH, LANDSCAPEFORMS
[55 EXISTING - 15 PROPOSED]



RECYCLING SYSTEM
BIGBELLY & SMARTBELLY DOUBLE
STATION [4 PROPOSED]



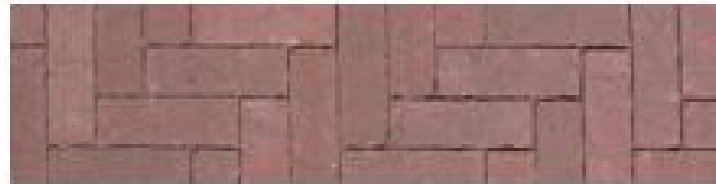
BIKE RACKS
U Bike Rack by Madrax
[6 RACKS EXISTING / 35 BICYCLES]
[24 PROPOSED / 48 BICYCLES]



MOST DEPENDABLE FOUNTAIN
[1 EXISTING - 1 PROPOSED]

SITE FURNISHINGS

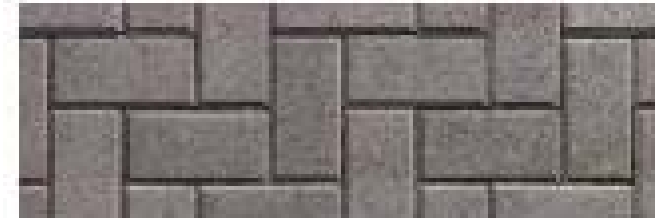
PEDESTRIAN MALL IMPROVEMENTS



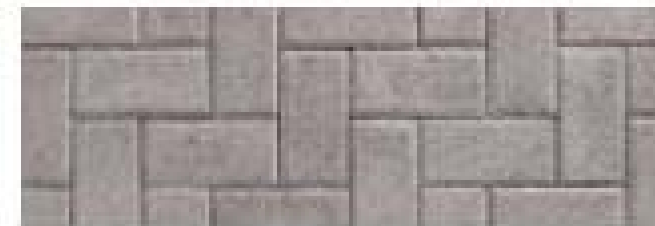
HANOVER TRADITIONAL
PREST BRICK PAVER
RUSSET BLEND



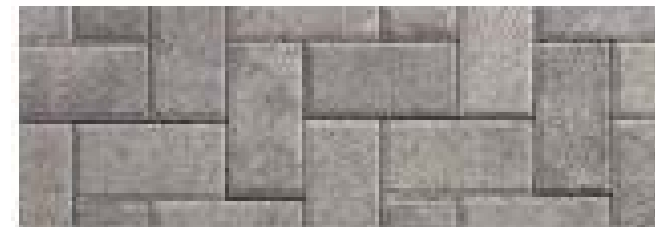
EXISTING CLAY
PAVER



HANOVER TRADITIONAL
PREST BRICK PAVER
CHARCOAL



HANOVER TRADITIONAL
PREST BRICK PAVER
LIMESTONE GRAY



HANOVER TRADITIONAL PREST
BRICK PAVER
NATURAL CHARCOAL BLEND

REPLACEMENT PAVING

PEDESTRIAN MALL IMPROVEMENTS

SECONDARY DESTINATIONS

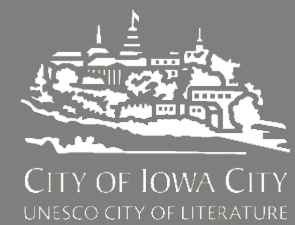
- Permanent Stage Canopy
- Black Hawk Mini Park
- Clinton Street Entry



gēnus

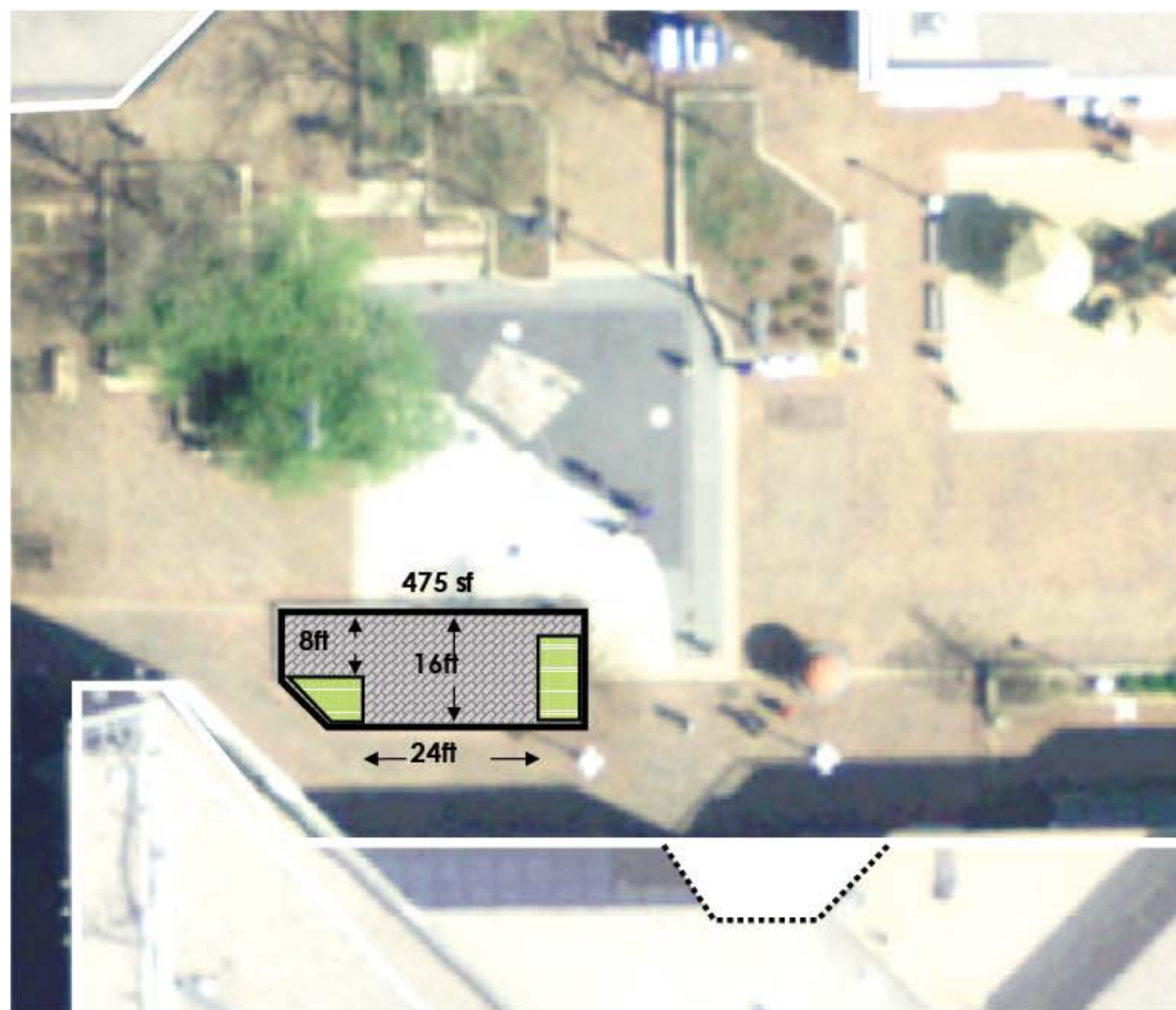
[landscape architects]

| NEUMANN MONSON | RAKER RHODES | SCHULER SHOOK | SHOEMAKER & HAALAND | SRF CONSULTING GROUP | DIVERSIFIED DESIGN |

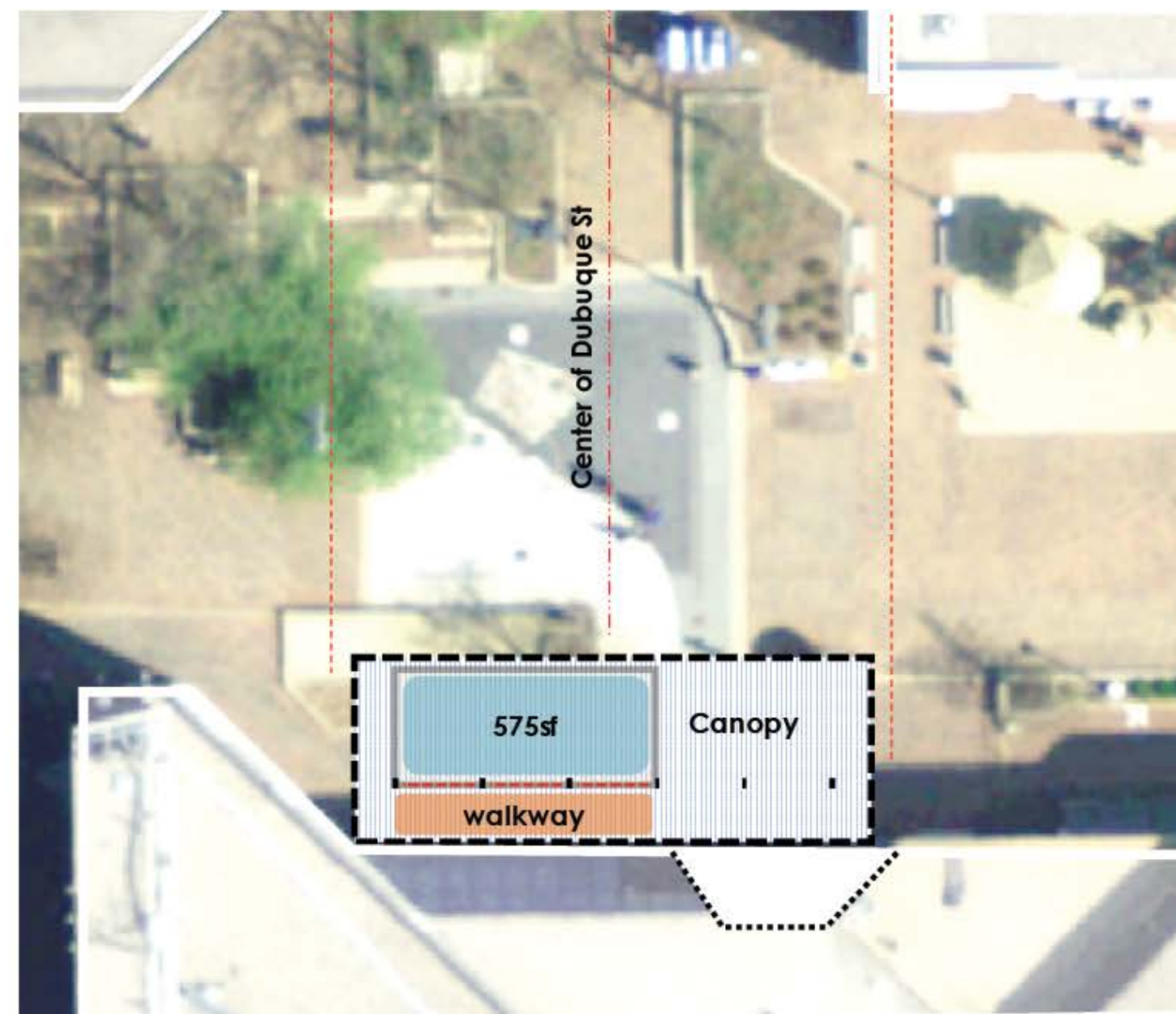




PERMANENT STAGE CANOPY AT WDF
PEDESTRIAN MALL IMPROVEMENTS



EXISTING STAGE CONFIGURATION
475 SF OF UNPROTECTED, PERFORMANCE SPACE; IRREGULAR STAGE SHAPE



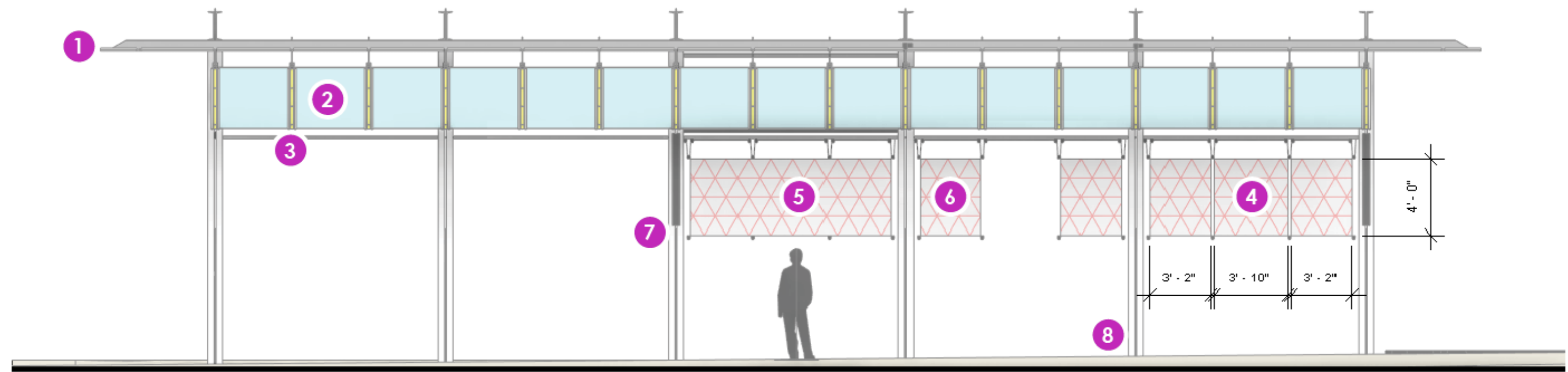
PROPOSED STAGE CONFIGURATION
575 SF OF COVERED PERFORMANCE SPACE

PERMANENT STAGE CANOPY AT WDF

PEDESTRIAN MALL IMPROVEMENTS



PERMANENT STAGE CANOPY AT WDF
PEDESTRIAN MALL IMPROVEMENTS



ELEVATION AS VIEWED FROM WEATHERDANCE FOUNTAIN

- 1 LOUVERED SCREEN TO MANAGE SUNLIGHT AND ELECTRIC LIGHTING
- 2 LAMINATED GLASS CANOPY WITH OPTIONAL GLASS PATTERN
- 3 INTEGRATED LED STAGE DOWN-LIGHTING
- 4 ADJUSTABLE HEIGHT BANNER INTEGRATION
- 5 SINGLE BANNER OPTION
- 6 MULTIPLE BANNER OPTION
- 7 PERMANENT SOUND SYSTEM FOR SMALL EVENTS [ELIMINATED]
- 8 POWER AND A/V ACCESS AT EACH COLUMN BASE



OPTIONAL, INTEGRAL GLASS PATTERN RELATES TO DOWNTOWN WAYFINDING

PERMANENT STAGE CANOPY AT WDF

PEDESTRIAN MALL IMPROVEMENTS

BLACK HAWK MINI PARK DESIGN GOALS

Create an open and flexible design to support
a varied and diverse program [2200 SF, 55' x 40']

Create a welcoming and comfortable space

Provide shaded seating areas to enhance usability of the space

Capture and communicate the history of Black Hawk Mini Park

Create a timeless design that projects a progressive
and/or forward-thinking image for Iowa City

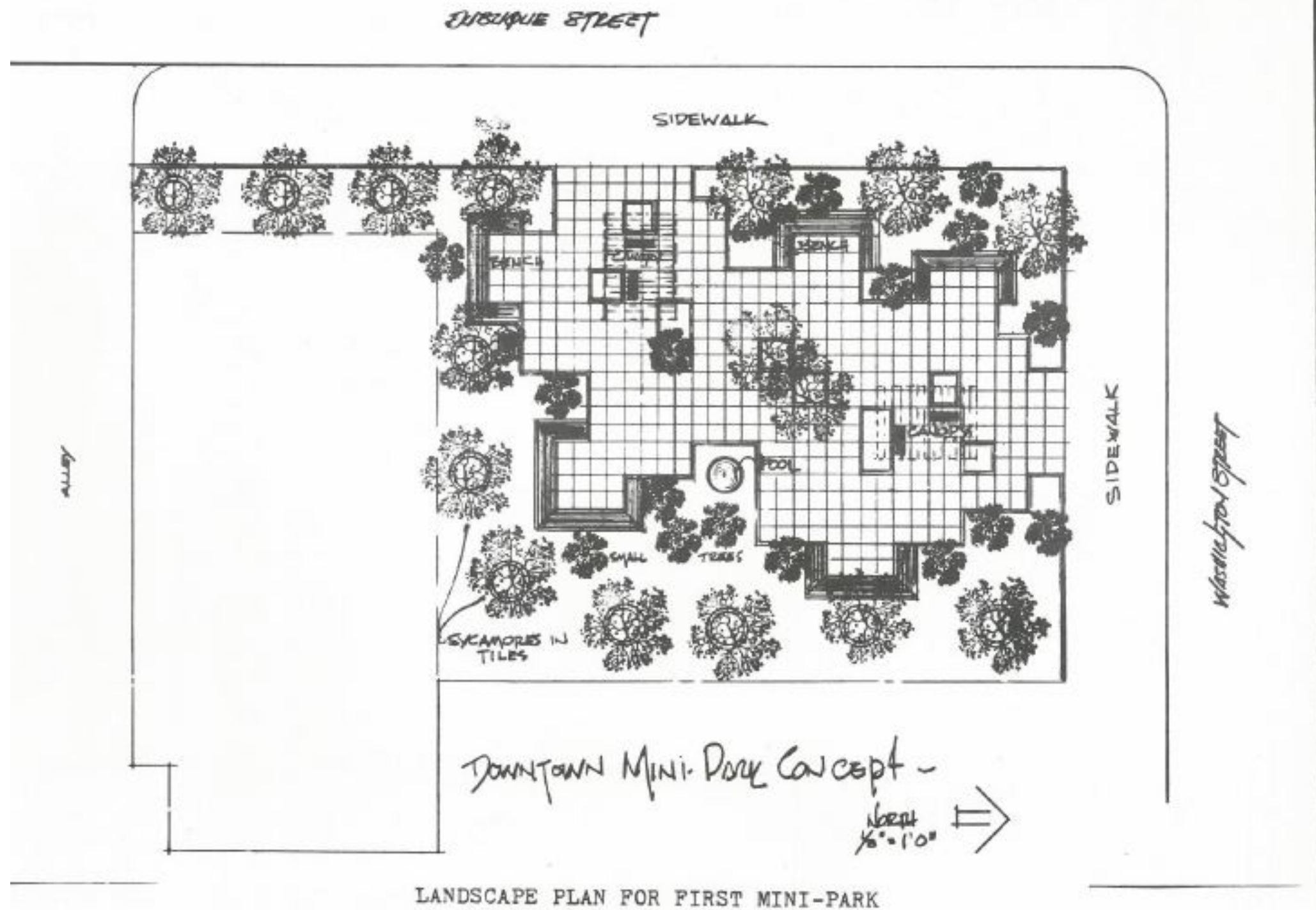
Screen Transformer



1970 **"The Spirit of Black Hawk"** mural became the epicenter of heated discourse over the meaning and use of space. It was a powerful, iconic image of resistance and it energized the passionate feelings of the time. It "reminds us that the guardians of this land who came before us treated it with more respect than we do."

BLACK HAWK MINI PARK

PEDESTRIAN MALL IMPROVEMENTS

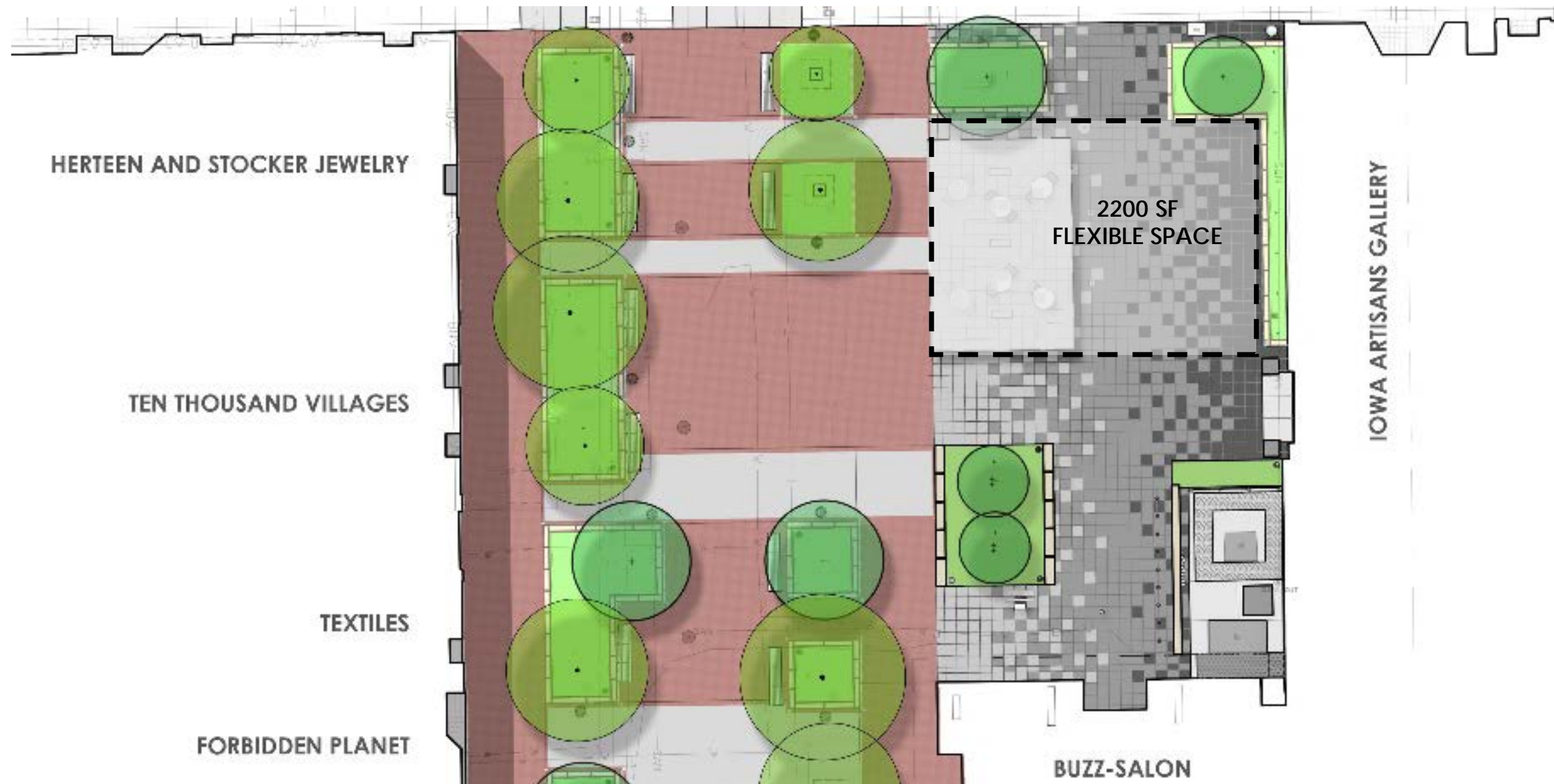


"reflects the cultural and artistic nature
of the community"

"activity center for art, music and
theater, a place for gatherings and
events"

BLACK HAWK MINI PARK

PEDESTRIAN MALL IMPROVEMENTS



BLACK HAWK MINI PARK

PEDESTRIAN MALL IMPROVEMENTS



BLACK HAWK MINI PARK
PEDESTRIAN MALL IMPROVEMENTS



BLACK HAWK MINI PARK
PEDESTRIAN MALL IMPROVEMENTS



BLACK HAWK MINI PARK
PEDESTRIAN MALL IMPROVEMENTS

THE SPIRIT OF BLACK HAWK

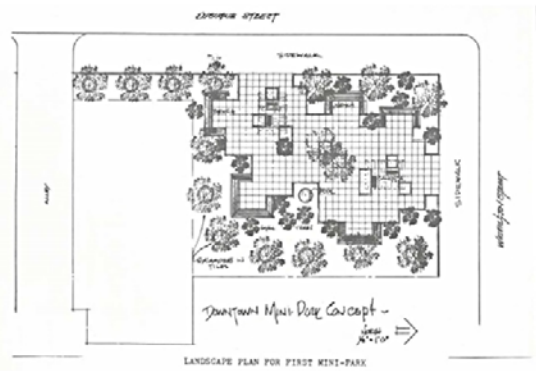


"The Spirit of Black Hawk" mural emerged from a 1975 UI Visual-Environmental Design Workshop and once covered the west face of the Paul-Helen building. In the mural, the proud and dignified Sac war chief, Black Hawk, stood looking out over downtown Iowa City. Black Hawk's shape morphed into hawks soaring upward, reminding us of the 'guardians of this land who came before us treated it with more respect than we do'.

The mural became a powerful, iconic image of resistance and it energized the passionate feelings of the time. It was the appropriate backdrop for what became known as the Black Hawk Mini Park site, once the epicenter of heated discourse over the meaning and use of space and demonstrations related not only to urban planning but also to the Vietnam war and the American Indian movement.



PROJECT GREEN



Project GREEN (an acronym for Grow to Reach Environmental Excellence Now) is a citizen-volunteer nonprofit organization established in 1968 with the mission to promote environmental awareness and public landscaping in Iowa City and to 'support the identification and conservation of open space, historic areas and buildings'.

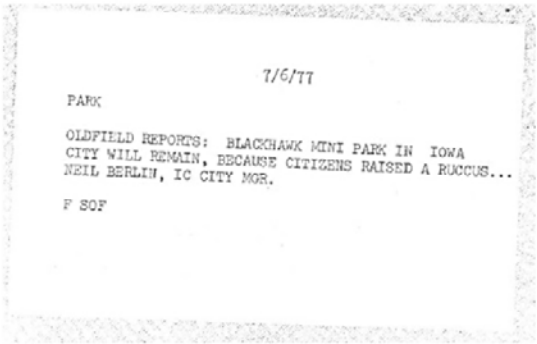
One of Project GREEN's early projects was the design, construction, and maintenance of what was originally called a 'pocket park' in 1973. Project GREEN proposed a 'refreshing, welcoming oasis for downtown visitors with trees, flowers and shrubbery, some benches and possibly even a modest fountain'.



Many local individuals, civic groups, and businesses came together and volunteered to build and maintain the pocket park, with funding by Project GREEN.

It was designed to be temporary, but the park location has proved to be a lasting one.

THE PEOPLE'S PARK



Black Hawk Mini Park was meant to be a temporary pocket park that would eventually be replaced with commercial development proposed by the city's 1969 urban renewal plan. However, during the May 24, 1977 Council meeting, citizens presented a petition containing 1,565 signatures to save the popular park. After heated debate, the Council voted 4-3 to retain Black Hawk Mini Park as a public open space, and an extension of the newly-created pedestrian mall.

This democratic spirit lives on, as the park continues to serve as a dedicated public commons, hosting an array of arts, entertainment, and community activities in the heart of downtown Iowa City.



INTERPRETIVE PANELS AT SHADE STRUCTURE
PEDESTRIAN MALL IMPROVEMENTS



CELEBRATE RESIDENTS WHO HAVE SHAPED AND INFLUENCED IOWA CITY

PROCESS: Online Survey
Group of Local Experts

COMMUNITY

(1924-1943) Howard Moffit
(1949-2016) Dottie Ray
(1960-1990) Minnette Doderer
(1968-1990) Nancy Seiberling
(1979-2017) Jean Lloyd Jones
(1990-2017) Karen Kubby

DISCOVERY

(1817-1887) Cyrus Sanders
(1950s) James Van Allen
(1990-2017) Connie Mutel

COMMERCE

(1854) John Hands
(1850-1900) E.D. Rate & Family
(1910) Boerner Family (pharmacy)
(1948) John Alberhasky
(1970-1980) Bill Sackter

EDUCATION

(1855) Martha Reno
(1873) Mary Wilkinson
(1920's) George Gallup

CULTURE

(1925) Dora Chapmen/Etta Englert
(1970-1990) Dave Morice

BLACK HAWK MINI PARK PEDESTRIAN MALL IMPROVEMENTS

CLINTSON STREET ENTRY DESIGN GOALS

Create a welcoming entry experience with wayfinding kiosk and shaded seating areas.

Introduce layers of accent lighting.

Celebrate City of Literature designation at story wall.

Improve accessibility at Clinton / College with new curb ramps, crosswalk paving and traffic signalization.



Wayfinding kiosk

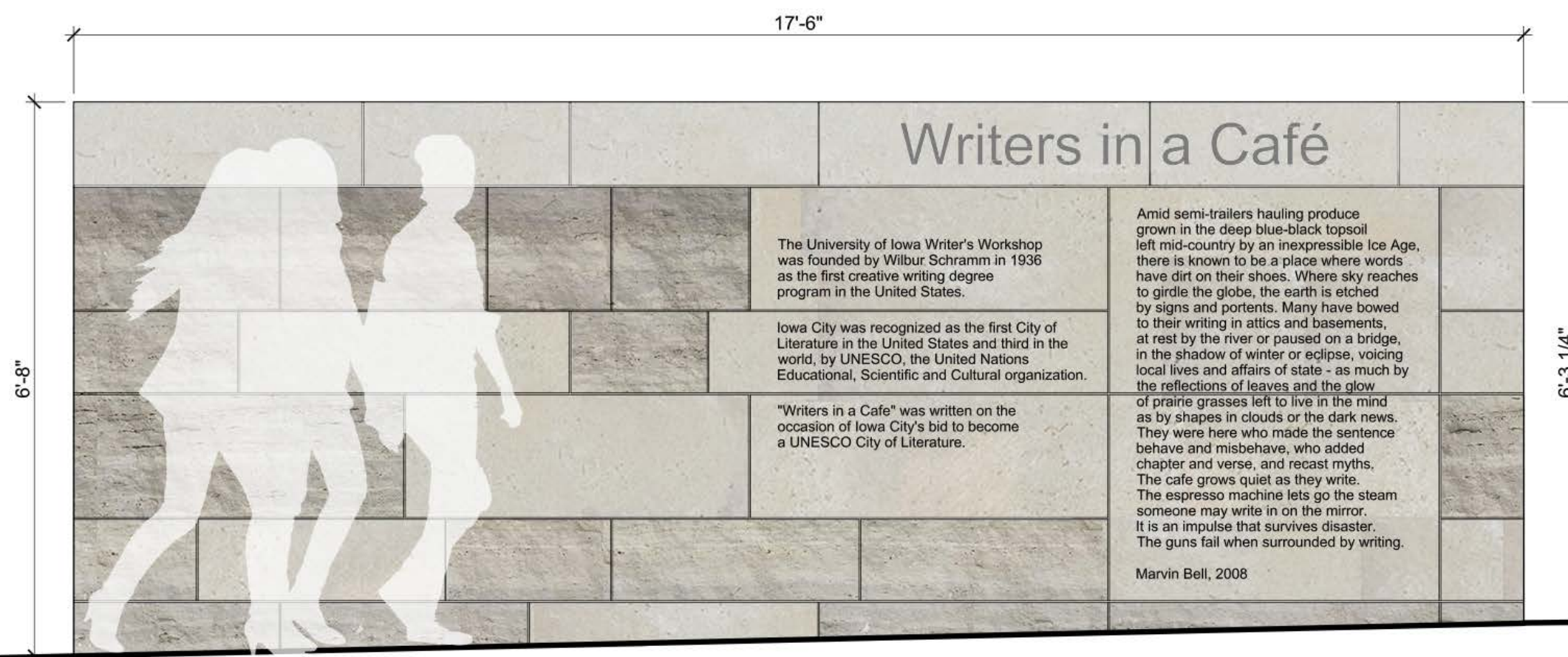
CLINTON STREET ENTRY
PEDESTRIAN MALL IMPROVEMENTS

Writers in a Café

IOWA CITY, IOWA, USA

Amid semi-trailers hauling produce grown in the deep blue-black topsoil left mid-country by an inexpressible Ice Age, there is known to be a place where words have dirt on their shoes. Where sky reaches to girdle the globe, the earth is etched by signs and portents. Many have bowed to their writing in attics and basements, at rest by the river or paused on a bridge, in the shadow of winter or eclipse, voicing local lives and affairs of state – as much by the reflections of leaves and the glow of prairie grasses left to live in the mind as by shapes in clouds or the dark news. They were here who made the sentence behave and misbehave, who added chapter and verse, and recast the myths. The café grows quiet as they write. The espresso machine lets go the steam someone may write in on the mirror. It is an impulse that survives disaster. The guns fail when surrounded by writing.

Marvin Bell



CLINTON STREET ENTRY PEDESTRIAN MALL IMPROVEMENTS

CONSTRUCTION PHASING

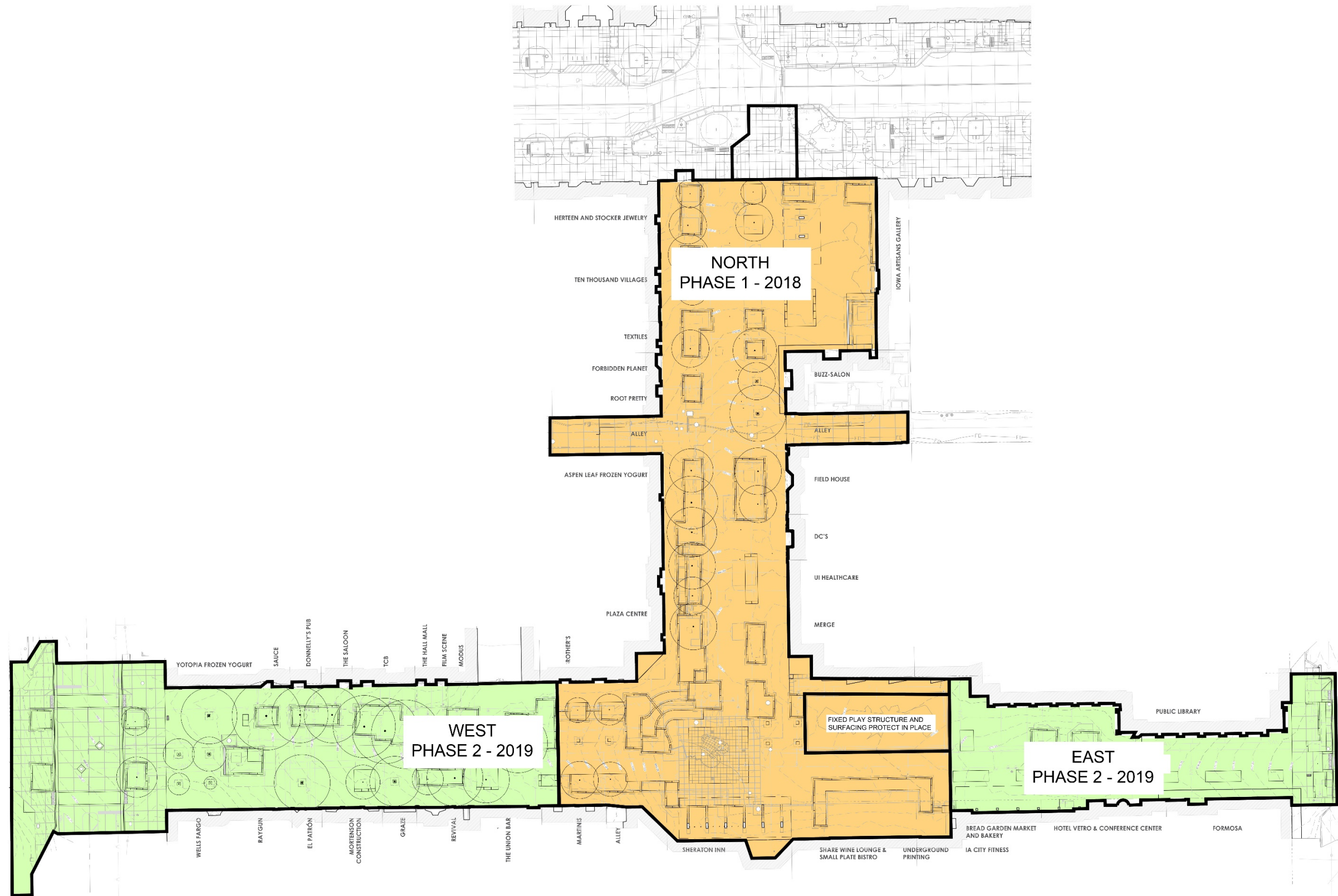
gēnus

[landscape architects]

| NEUMANN MONSON | RAKER RHODES | SCHULER SHOOK | SHOEMAKER & HAALAND | SRF CONSULTING GROUP | DIVERSIFIED DESIGN |

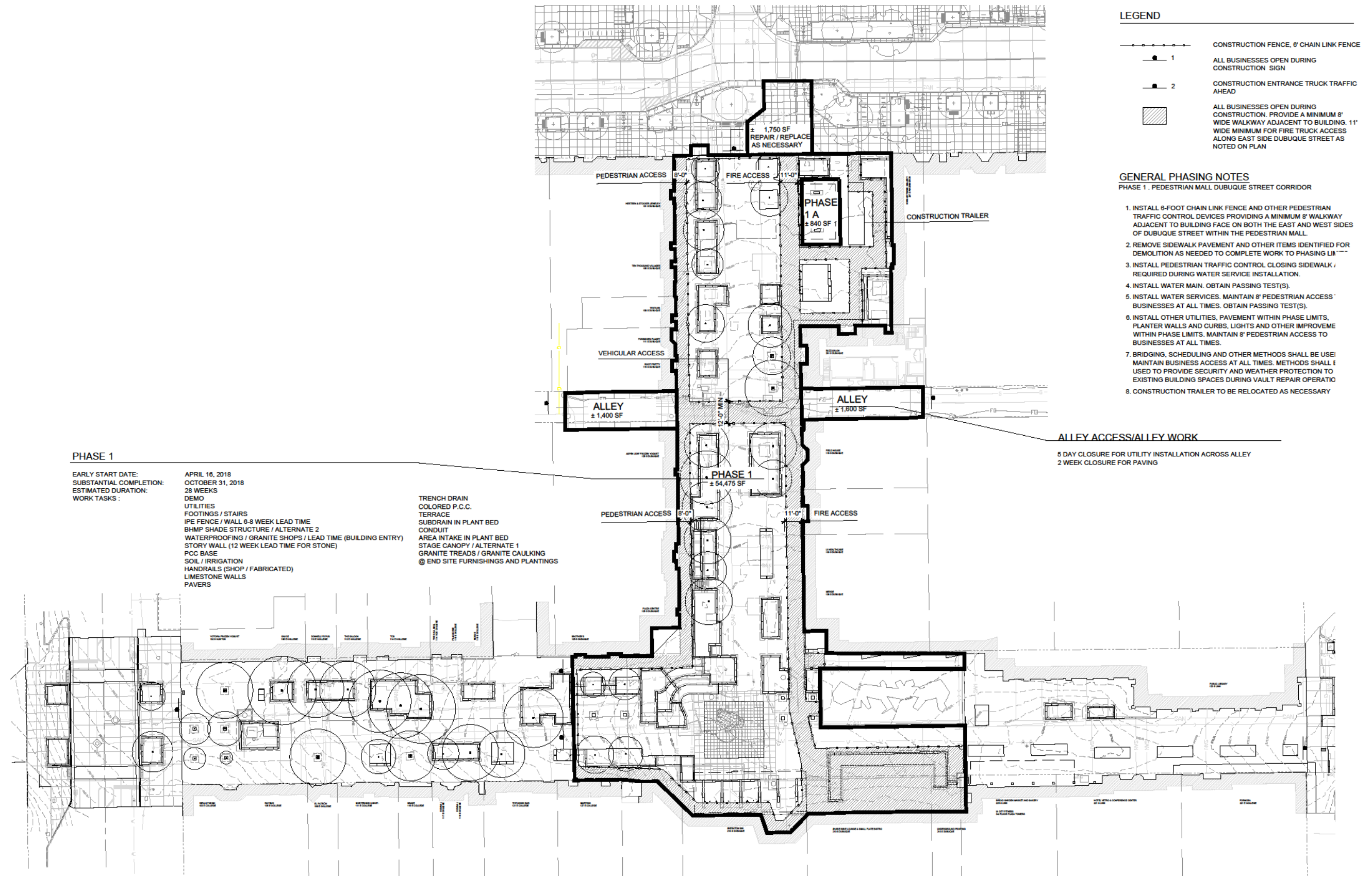


CITY OF IOWA CITY
UNESCO CITY OF LITERATURE



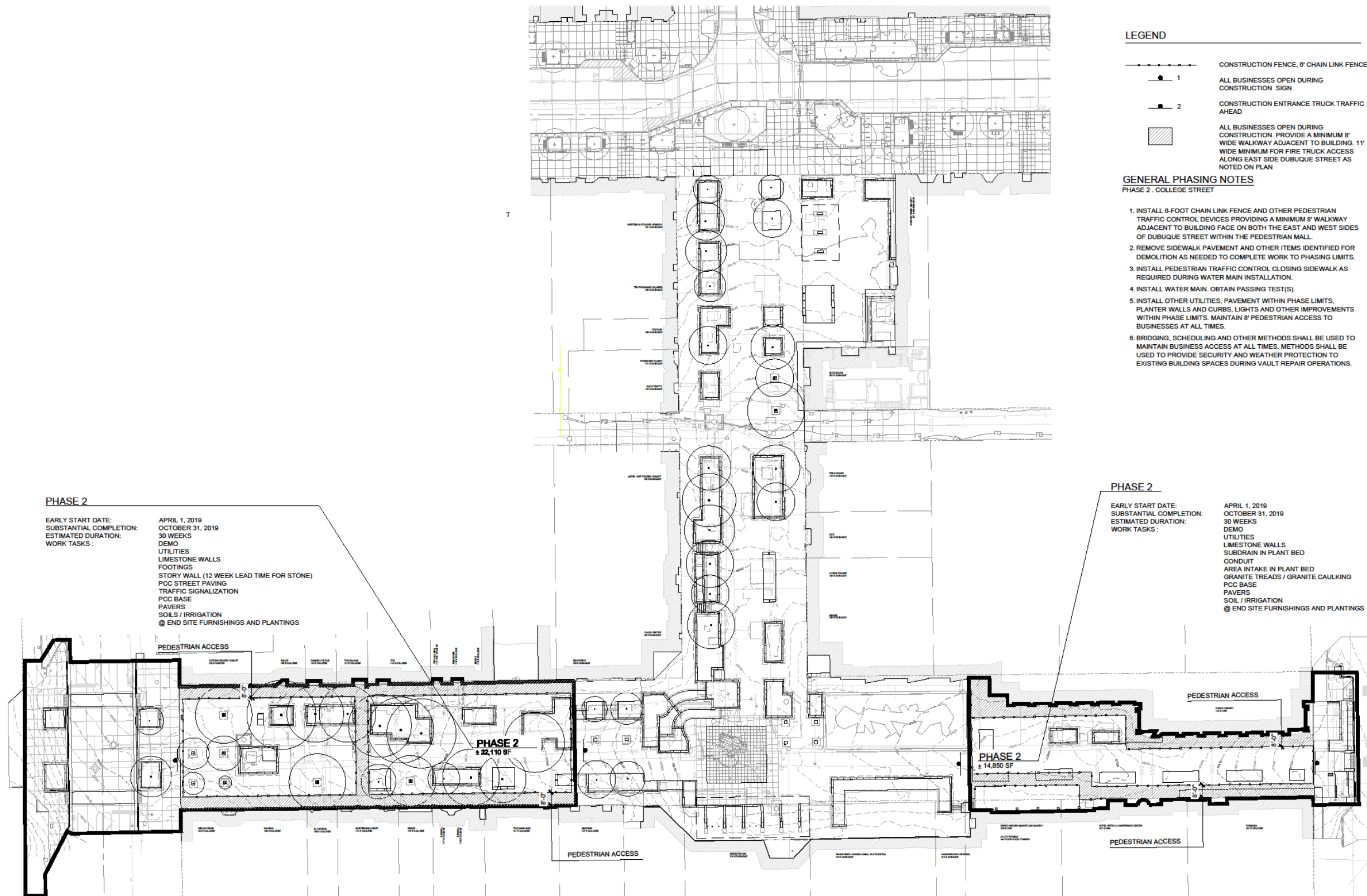
CONSTRUCTION PHASING

PEDESTRIAN MALL IMPROVEMENTS



CONSTRUCTION PHASING

PEDESTRIAN MALL IMPROVEMENTS



CONSTRUCTION PHASING

PEDESTRIAN MALL IMPROVEMENTS

SUMMARY OF PROJECT COSTS

SUMMARY OF PROJECT COSTS

BASE BID	\$7,505,380
ALTERNATE 1 + 2	\$1,042,800
2017 GO Bonds	\$3,100,000
2018 GO Bonds	\$3,100,000
Water	\$ 268,509
Storm Water	\$ 266,692
S3826 – Elect. Underground	\$ 242,689
S3814 – Traffic Signalization	\$ 63,720
2015 GO Bonds (From P3971)	\$ 350,000 (Includes \$11,519 for BHMP)
2016 GO Bonds (From S3938)	<u>\$ 300,000</u>
	\$7,691,610

PROJECT COSTS

PEDESTRIAN MALL IMPROVEMENTS

NEXT STEPS

BID SCHEDULE

Final Design Documents to the City	1/26/18
Design Documents on file with City Clerk	2/2/18
Set Public Hearing	2/6/18
Public Hearing / Approve Plans and Specifications	2/20/18
Pre-Bid Meeting	3/6/18
Bids Due	3/13/18
Award	3/20/18
Construction [Early Start]	4/16/18

PROJECT COSTS

PEDESTRIAN MALL IMPROVEMENTS

Q & A