

Site Inventory Form
State Historical Society of Iowa
 (December 1, 1999)

State Inventory No. **52-01058**

New Supplemental

Part of a district with known boundaries (enter inventory no.) _____

Relationship: Contributing Noncontributing

Contributes to a potential district with yet unknown boundaries

National Register Status:(any that apply) Listed De-listed NHL DOE

9-Digit SHPO Review & Compliance Number _____

Non-Extant (enter year) _____

1. Name of Property

historic name Ewers Men's Store

other names/site number Moses Bloom Clothing Store, Bloom & Mayer, A.M. Ewers & Co.

2. Location

street & number 28 S. Clinton Street

city or town Iowa City

vicinity, county Johnson

Legal Description: (If Rural) Township Name _____

Township No. _____ Range No. _____ Section _____ Quarter of Quarter _____

(If Urban) Subdivision Original Town

Block(s) 80

Lot(s) Part of 6

3. State/Federal Agency Certification [Skip this Section]

4. National Park Service Certification [Skip this Section]

5. Classification

Category of Property (Check only one box)

- building(s)
- district
- site
- structure
- object

Number of Resources within Property

If Non-Eligible Property

Enter number of:

- buildings
- sites
- structures
- objects
- Total

If Eligible Property, enter number of:

Contributing Noncontributing

- 1 buildings
- sites
- structures
- objects
- 1 Total

Name of related project report or multiple property study (Enter "N/A" if the property is not part of a multiple property examination).

Title Iowa City Central Business District Study - 2017 UPDATE

Historical Architectural Data Base Number 52-127

6. Function or Use

Historic Functions (Enter categories from instructions)

02E COMMERCE/TRADE/specialty store

Current Functions (Enter categories from instructions)

02E COMMERCE/TRADE/specialty store

7. Description

Architectural Classification (Enter categories from instructions)

07B LATE 19TH & EARLY 20TH CENTURY AMERICAN

MOVEMENTS/Commercial Style

Materials (Enter categories from instructions)

foundation 03 BRICK

walls 03 BRICK

roof _____

other _____

Narrative Description (SEE CONTINUATION SHEETS, WHICH MUST BE COMPLETED)

8. Statement of Significance

Applicable National Register Criteria (Mark "x" representing your opinion of eligibility after applying relevant National Register criteria)

- Yes No More Research Recommended
- Yes No More Research Recommended
- Yes No More Research Recommended
- Yes No More Research Recommended

- A Property is associated with significant events.
- B Property is associated with the lives of significant persons.
- C Property has distinctive architectural characteristics.
- D Property yields significant information in archaeology or history.

County Johnson
City Iowa City

Address 28 S. Clinton Street

Site Number 52-01058
District Number

Criteria Considerations

- A Owned by a religious institution or used for religious purposes.
- B Removed from its original location.
- C A birthplace or grave.
- D A cemetery.
- E A reconstructed building, object, or structure.
- F A commemorative property.
- G Less than 50 years of age or achieved significance within the past 50 years.

Areas of Significance (Enter categories from instructions)

01 ARCHITECTURE

05 COMMERCE

Significant Dates

Construction date
1874 check if circa or estimated date
Other dates
ca.1923 - façade

Significant Person

(Complete if National Register Criterion B is marked above)

Architect/Builder

Architect
unknown
Builder
unknown

Narrative Statement of Significance SEE CONTINUATION SHEETS, WHICH MUST BE COMPLETED

9. Major Bibliographical References

Bibliography See continuation sheet for citations of the books, articles, and other sources used in preparing this form

10. Geographic Data

UTM References (OPTIONAL)

Zone	Easting	Northing	Zone	Easting	Northing
1	_____	_____	2	_____	_____
3	_____	_____	4	_____	_____

See continuation sheet for additional UTM references or comments

11. Form Prepared By

name/title Alexa McDowell, Historian

organization AKAY Consulting

date 11/2017

street & number 4252 Oakland Avenue

telephone 515-491-5432

city or town Minneapolis

state MN

zip code 55407

ADDITIONAL DOCUMENTATION (Submit the following items with the completed form)

FOR ALL PROPERTIES

- Map:** showing the property's location in a town/city or township.
- Site plan:** showing position of buildings and structures on the site in relation to public road(s).
- Photographs:** representative black and white photos. If the photos are taken as part of a survey for which the Society is to be curator of the negatives or color slides, a photo/catalog sheet needs to be included with the negatives/slides and the following needs to be provided below on this particular inventory site:

Roll/slide sheet # _____	Frame/slot # _____	Date Taken _____
Roll/slide sheet # _____	Frame/slot # _____	Date Taken _____
Roll/slide sheet # _____	Frame/slot # _____	Date Taken _____

- See continuation sheet or attached *photo & slide catalog sheet* for list of photo roll or slide entries.
- Photos/illustrations without negatives are also in this site inventory file.

FOR CERTAIN KINDS OF PROPERTIES, INCLUDE THE FOLLOWING AS WELL

- Farmstead & District:** (List of structures and buildings, known or estimated year built, and contributing or non-contributing status)
- Barn:**
 - A sketch of the frame/truss configuration in the form of drawing a typical middle bent of the barn.
 - A photograph of the loft showing the frame configuration along one side.
 - A sketch floor plan of the interior space arrangements along with the barn's exterior dimensions in feet.

State Historic Preservation Office (SHPO) Use Only Below This Line

Concur with above survey opinion on National Register eligibility: Yes No More Research Recommended
 This is a locally designated property or part of a locally designated district.

Comments: _____

Evaluated by (name/title): _____ Date: _____

Iowa Site Inventory Form Continuation Sheet

Related District Number

Page 1

Ewers Men's Store
Name of Property
28 S. Clinton Street
Address

Johnson
County
Iowa City
City

7. Property Description

The Ewers Men's Store building is a 3-story, 20- by 62-foot, single bay building set amid a contiguous block of commercial properties, near the south end of the block. The building constitutes the north half of a two-bay property likely constructed prior to 1874, when it first appeared on the Sanborn Co. fire insurance map for that year. A building with the same footprint appears on all subsequent fire insurance maps and no evidence has been located to suggest the present structure is not that recorded on the 1874 fire insurance map and early historic images document its presence. The north half (28) of the building has functioned autonomously for nearly 100 years and, as a result, is considered independent of the south half (30).

As stated by Svendsen, the original building was built as a two bay, 3-story structure, with a storefront in each half and a combination of apartments and office spaces located on the upper floors. The early building had a brick facade with a cast iron storefront. Typical of Late Victorian era Italianate Style commercial buildings, the upper stories featured tall and narrow windows with heavy, window hoods; a prominent cornice finished the building. The south half of the building (30 S. Clinton), which remains largely unaltered, provides evidence of the early appearance of the upper story of the Ewers building.

The 2001 building evaluation notes that the façade of the Ewers Men's Store building was radically modified in 1906. It is more likely that the alteration dates to 1923 - local newspapers report that a major remodeling of the building was undertaken in preparation for A.M. Ewers & Co.'s move into the building from their location in the Furbish Block (101 S. Clinton). As noted in the 2001 survey, the alteration included the addition of plate glass windows at storefront level, with the upper façade refaced in glazed brick. The "new" façade fully embraced the 20th century by replacing its Italianate window arrangements with "Chicago windows" (groupings that included a large fixed sash flanked by narrow 1/1 double-hung windows). The elaborate Victorian cornice was replaced by a more restrained, but elegant version in the Neoclassical Style executed in terracotta; the replacement cornice is complete with modillions, brackets and dentils. The use of Chicago windows, glazed brick, terracotta, and the Neoclassical style in commercial building designs came into use in the early years of the 20th century - these design trends and materials were appearing in Chicago by about 1905. The influence of Chicago architects and architecture in the form of these elements was appearing on Iowa main streets through the first quarter of the century. Given the broad timeframe in which this influence appears in Iowa's downtowns, the renovation of the façade could reasonably have occurred in either 1906 or 1923. Additional research may one day pinpoint the alteration.

The building's façade was again modified after 1981, when the Chicago windows were replaced by plate glass windows with applied muntins and fire-escape openings (fire insurance maps note the use of a fire escape on the façade dates as far back as 1874). In 2001 the storefront now had a centered entrance flanked by plate glass windows with a heavy Neoclassical Style signboard and architrave separating the first and second levels.

In 2017, the building remains much the same as reported in 2001. The storefront retains a center, recessed entrance flanked by large display windows with a modestly scaled bulkhead. The storefront transom features a single wide band with the store sign "Ewers Men's Store" mounted on-center. A canvas awning is mounted on the underside of the storefront store sign. A classically inspired storefront cornice (complete with 3-part entablature including dentils) marks the transition between storefront and upper stories. The upper wall is faced in green, glazed brick and the Neoclassical, terracotta cornice remains intact and appears to be in good condition. Terracotta coping tiles finish the stepped parapet. The 1981 replacement windows are retained. They are an unfortunate alteration, but retention of the terracotta trim around the historic window opening helps diminish the loss of the Chicago windows.

Iowa Site Inventory Form Continuation Sheet

Related District Number

Page 2

Ewers Men's Store
Name of Property
28 S. Clinton Street
Address

Johnson
County
Iowa City
City

Image 01. View of the streetscape within which the building is located, looking NE across S. Clinton Street.



(Image by AKAY Consulting, August 2017.)

The Ewers building is easily recognized by its green, glazed brick façade.

Image 02. View of the façade (west elevation), looking east across S. Clinton Street



(Image by AKAY Consulting, August 2017.)

Before and after 28 and 30 S. Clinton reflecting the appearance of the Late Victorian façade (retained on the right) and the 20th century renovation undertaken on the Ewers Men's Store façade.

Iowa Site Inventory Form Continuation Sheet

Related District Number

Page 3

Ewers Men's Store
Name of Property
28 S. Clinton Street
Address

Johnson
County
Iowa City
City

Image 03. Historic Image – ca.1970



This image from the 1970s documents the Ewers Men's Store building prior to the introduction of the upper store windows and storefront now in place. In this view, the window form known as the Chicago window – a single, large, fixed-paned window flanked by smaller, double-hung windows – was replaced in 1981.

8. Statement of Significance

The building at 28 S. Clinton Street has been referred to variously as Moses Bloom Clothing, Bloom & Mayer, A.M. Ewer & Co., and Ewers Men's Store; the 2001 evaluation did not prioritize those names. For the purposes of the present evaluation, Ewers Men's Store has been adopted as the historic name because the current façade dates to the occupancy by Ewers and because, for most of the nearly 95 years the business has occupied the building, it has been known as Ewers Men's Store.

The Ewers Men's Store building is located opposite Old Capitol, a National Historic Landmark, and the Pentacrest, a National Register historic district. Ewers Men's Store is considered a contributing resource to a potential historic district. The resource is significant under Criterion C as a moderately well-preserved example of the Commercial Style originally built as a double storefront by 1874, but reconstructed by 1923 to reflect the architectural and material trends popular during the early 20th century. Further, the resource is significant under Criterion A in association with the history of commerce, specifically in its association with longtime occupant, the Ewers Men's Store, which located in the building in 1923 and remains there to this day.

Although its 20th century history character has been diminished by replacement of the character-defining Chicago windows, the retention of glazed face brick, terracotta cornices and coping, as well as an historically sympathetic storefront, the resource retains sufficient historic integrity to be considered a contributing structure in a potential historic district.

It should be noted, that the evolution of 28-30 is more complicated than the following general history may imply; the full story of its construction, alteration, and occupation (during its early years in particular) would require significantly more research and evaluation. However, for the purposes of determining eligibility to the National Register of Historic Places, the history that is known is more than sufficient to understand its place in the history of Iowa City architecture and commerce.

Iowa Site Inventory Form Continuation Sheet

Related District Number

Page 4

Ewers Men's Store
Name of Property
28 S. Clinton Street
Address

Johnson
County
Iowa City
City

Historical Background

As originally laid out, the east side of Clinton Street provided a series of lots facing west onto “Capitol Square.” This commercial building appears to date from prior to 1874 when a building of similar dimensions was first depicted on a fire insurance map. Property transfer records for this property show it was owned by Moses Bloom and members of his family from prior to the Civil War through World War I, during which time the building was a two-bay property with two storefronts (Svendsen, 2001).

It should be noted that the city’s address system has changed multiple times. Per the 1874 fire insurance maps, storefronts in this block of S. Clinton were numbered consecutively from 37 on the north to 22 on the south; the clothier being located at 23-24 S. Clinton. In 1883, the fire insurance map records the storefronts as numbered by odd-number from 1 on the north to 31 on the south corner. Thus, the 2-bay building was numbered 27-29 S. Clinton. By 1888, the current numbering system was in place, and the building was identified as 28-30 S. Clinton, with the Ewers Men’s Store building numbered 28 S. Clinton.

Svendsen notes that Moses Bloom arrived in Iowa City from New York City in 1857 and opened a clothing store a short time later on the east side of Clinton Street, possibly at this address; this suggests the possibility that the building was constructed as early as 1857. Bloom’s clothing store also included a merchant tailoring business and handled men’s hats and furnishings. By 1868 the city directory notes, “M. Bloom, clothier, es Clinton nr. Iowa ave.” and the 1874 fire insurance map notes a clothier in both 28 and 30. When Bloom’s son-in-law Max Mayer joined the business, the firm became known as Bloom and Mayer. Moses Bloom also owned other parcels in this block (Block 80) to the north and east of his property at 28-30 S. Clinton.

Image 04. Historic Image - undated (ca.1870)



(Image courtesy of the State Historical Society of Iowa, Iowa City.)

In this view, looking northeast across S. Clinton at Washington Street, we see the Bloom Clothing Store (note blade sign) adjacent to the corner building (later, the location of Whetstone’s). The clothing store occupies 30 S. Clinton – the south half of the 2-bay building. A sliver of the north half (28) provides a glimpse of the similarity of appearance.

Iowa Site Inventory Form Continuation Sheet

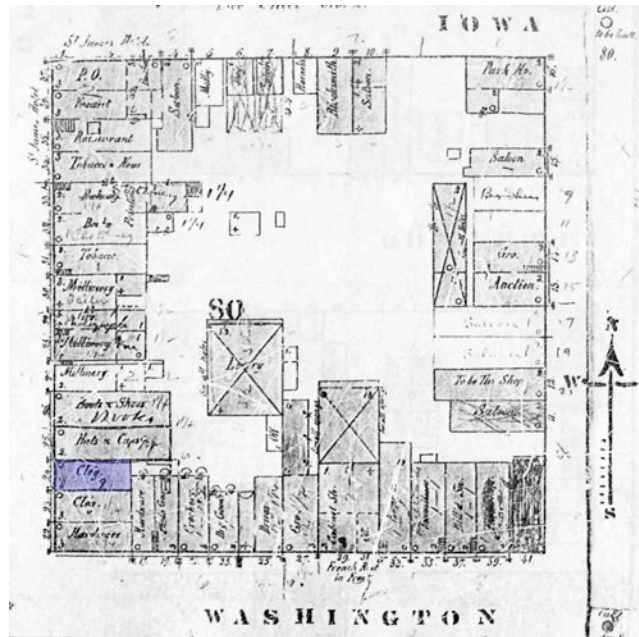
Related District Number

Page 5

Ewers Men's Store
Name of Property
28 S. Clinton Street
Address

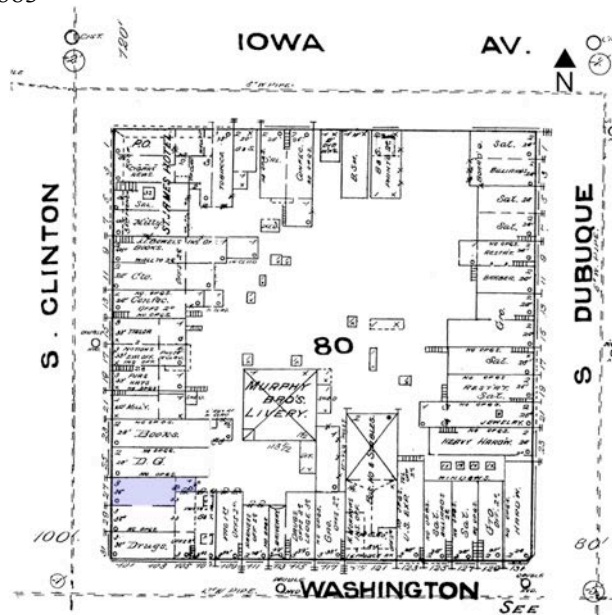
Johnson
County
Iowa City
City

Figure 01. Insurance Map – 1874



(SOURCE: Sanborn Company Fire Insurance Map, 1874.)

Figure 02. Insurance Map – 1883



(SOURCE: Sanborn Company Fire Insurance Map, 1883.)

In contrast to the 1874 fire insurance map, the 1883 map notes an interior connection between 28 and 30.

Iowa Site Inventory Form Continuation Sheet

Related District Number

Page 6

Ewers Men's Store
Name of Property
28 S. Clinton Street
Address

Johnson
County
Iowa City
City

Image 05. Historic Image - ca.1880



(Image courtesy of the State Historical Society of Iowa, Iowa City.)

In a similar view across Clinton and Washington Streets, we see the entire 2-bay building in its place to the north of Whetstone's (then Whetstone & Foltz). Though difficult to see, the name "Blooms" stretches across the upper façade, just beneath the cornice, with "One Price Clothing House" mounted between the 2nd and 3rd floors. Bloom's occupation of both bays of the building is supported by city directory entries, which place the business in both storefronts through ca.1911.

Image 06. Historic Image - ca.1905



(Image courtesy of the State Historical Society of Iowa, Iowa City.)

In this ca.1905 view of the east side of S. Clinton Street, looking south from Iowa Avenue, we can see the unified façade of the building at 28-30 S. Clinton – the cornice and rhythm of fenestration of each bay matches.

Iowa Site Inventory Form Continuation Sheet

Related District Number

Page 7

Ewers Men's Store	Johnson
Name of Property	County
28 S. Clinton Street	Iowa City
Address	City

Both Moses Bloom and Max Mayer were active in civic life in Iowa City. Bloom served as mayor in 1874 and was elected to the state legislature in 1877 and 1879. Mayer was Iowa City postmaster for a time and was a promoter of athletics at the State University of Iowa where he was sometimes referred to as the “father of Iowa football.”

As Svendsen notes, in 1919 the Blooms sold the north half of the original building to Arthur M. and Florence Ewers. A.M. Ewers had relocated to Iowa City from Albia, Iowa in 1915, at which time he leased the Furbish Block at 101 S. Clinton Street. News accounts note that Ewers and family were “lured [to Iowa] by the University’s advantages” – undoubtedly, the proximity of the Furbish Block to the campus and commercial downtown had something to do with his choice to lease that specific property (ICPC, 08/12/1915).

Arthur Ewers and his sons, Glenn and Roy, had multiple retail enterprises in the Iowa City downtown. Known as “the Corner Store” the Furbish Block accommodated A.M. Ewer & Co., shoes from 1915 through 1923. In 1921 Ewers purchased the Drisco Cash Grocery at 105 S. Clinton, just south of the Corner Store. The family operated their Economy Store from that storefront for many years. In 1946, the Ewers completed a renovation of the property that included “two connected rooms facing Clinton” (105-107) and re-facing of the storefronts with “wine and beige Carrara glass” (ICPC, 09/1/1946). The remodeled storefronts were occupied by Ewers Footwear, which remained at that location (105-107) through at least 1960. A few short years later, the entire block of buildings was razed as part of the city’s urban renewal efforts. The block is now occupied by the Old Capitol Mall.

Image 07. Historic Image – ca.1965



(Image courtesy of the State Historical Society of Iowa, Iowa City.)

Arthur M. Ewers and his family had multiple retail enterprises. When he came to Iowa City from Albia in 1915, Ewers leased the Furbish Block on the southwest corner of Clinton and Washington Streets (101 S. Clinton), which is seen here at the far end of the block. Although he purchased the north half of Bloom’s building (28) in 1919, A.M. Ewer & Co. remained in the Furbish Block through 1923 when Ewers moved into their newly remodeled building at 28 S. Clinton. In 1921 Ewer’s Economy Store opened at 105 S. Clinton (noted above). Ewers continued doing business from 105-107 S. Clinton (first as Ewer’s Economy Store, then as Ewer’s Footwear Shop) through at least 1960.

|

Iowa Site Inventory Form Continuation Sheet

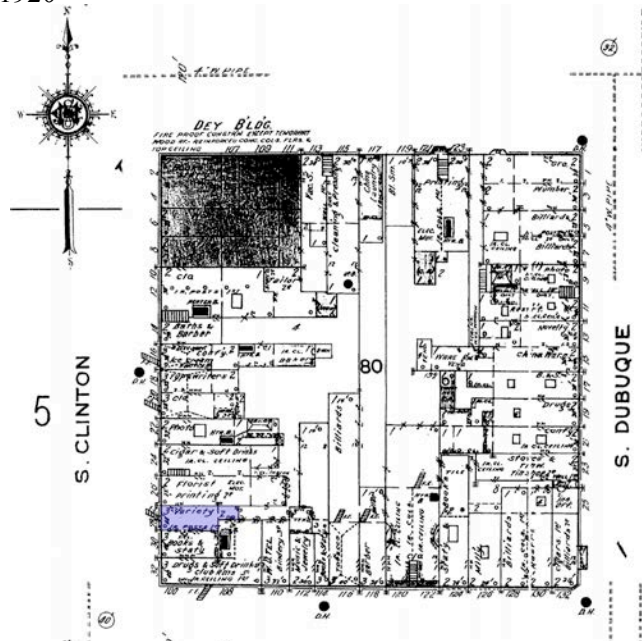
Related District Number

Page 8

Ewers Men's Store
Name of Property
28 S. Clinton Street
Address

Johnson
County
Iowa City
City

Figure 03. Insurance Map – 1920



(SOURCE: Sanborn Company Fire Insurance Map, 1920.)

In 1920, the north half of the building (28) was occupied by a “variety” shop – the Shiley Variety Store. The building retained iron posts on the 1st floor (noted on earlier maps), suggesting that there was not a solid wall separating the storefronts at 28 and 30. The map notes an interior opening between the two sides of the building was found on the 3rd floor.

Iowa Site Inventory Form Continuation Sheet

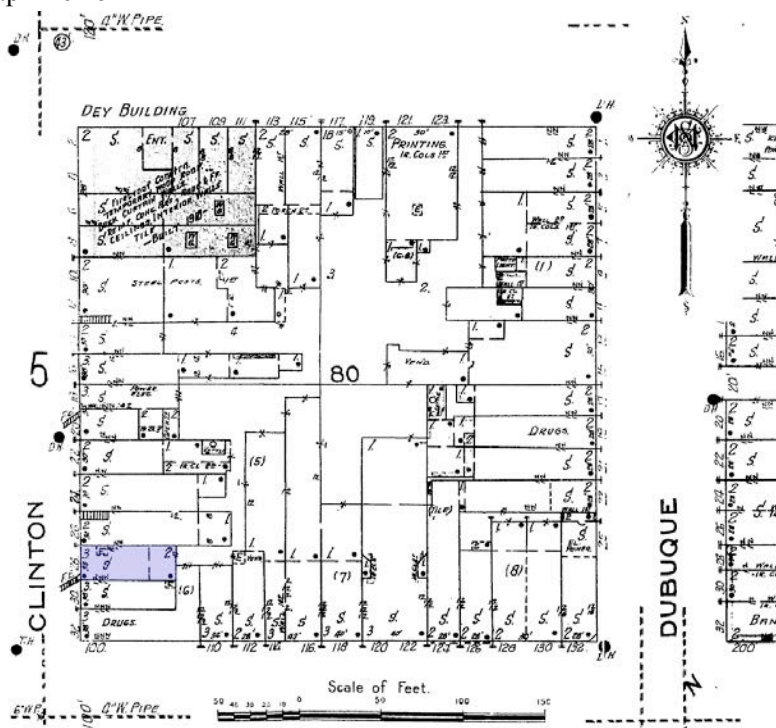
Related District Number

Page 9

Ewers Men's Store
Name of Property
28 S. Clinton Street
Address

Johnson
County
Iowa City
City

Figure 04. Insurance Map – 1926



(SOURCE: Sanborn Company Fire Insurance Map, 1920.)

Though difficult to read here, the 1926 fire map notes “E” near the north wall, indicating an elevator where none had previously existed. This supports newspaper accounts that Ewer’s 3rd floor bargain department was accessible by elevator – an enhancement apparently made in 1923 when the building was remodeled for occupancy by Ewer’s. The map also notes the closure of an interior, third floor opening between the building’s two bays and a small alteration at the rear of the building – likely made at the time Ewers remodeled in advance of opening their business at this location.

Although A.M. Ewers purchased the building at 28 S. Clinton in 1919, the storefront remained occupied by Shiley Variety Store until 1923. At that time, Ewers advertised a “Shiley stock clearing sale” with notice that the building was to be remodeled for a new tenant: A.M. Ewers & Co. Ewers aimed to open for business in his newly renovated home in April, 1923 (ICPC, 04/19/1923). Ewers took full advantage of his new 3-story space, adding an elevator as part of the renovations. The store featured men’s and women’s shoes on the first floor, children’s shoes and women’s “High Shoes” on the second, and variety stock (toys, games, books, dishes, hosiery, etc.) on the 3rd floor. Recognizing the potential hesitation of patrons to take stairs to the third floor, Ewers advertised elevator access to the upper stories (ICPC, 08/07/1923).

In ca.1947, A.M. Ewers & Co. became known as Ewers Men’s Store. In the 1980s the business was operated by Dwane and Jean (Ewers) Noser. Ewers Men’s Store remains in business at 28 S. Clinton in 2017.

Iowa Site Inventory Form Continuation Sheet

Related District Number

Page 10

Ewers Men's Store	Johnson
Name of Property	County
28 S. Clinton Street	Iowa City
Address	City

9. Major Bibliographic References (2001)

Iowa City city directories.

Property Transfer Records, Johnson County Auditor's Office.

Tax Assessor's Records, City of Iowa City Assessor.

Summary Sheets, 28 South Clinton, Urban Revitalization Act Study Area Survey, 1981.

Sanborn maps, 1874, 1879, 1888, 1892, 1899, 1906, 1912, 1920, 1926, 1933, and 1933 updated to 1970.

Weber, Irving, "Clinton Street Famous for Many Clothing Stores," *Iowa City Press-Citizen*, July 26, 1980.

2017 References

Iowa City Public Library. Digital Photograph collection. <http://history.icpl.org>.

Iowa City Then & Now. Publisher unknown.

Mansheim, Gerald. *Iowa City: an illustrated history*. Norfolk, VA: The Donning Company, 1989.

State Historical Society of Iowa. Iowa City. Photograph Collection.

Slonneger, Marybeth. *Finials: A View of Downtown Iowa City*. Iowa City: Hand Press, 2015.

Svendsen, Marlys A. "Survey and Evaluation of the Central Business District." Prepared for the Iowa City Historic Preservation Commission, 2001.

Svendsen, Marlys A. "Moses Bloom, Clothing": 52-01058." Iowa Site Form, 2001.

Historical Timeline

- 1901 City Directory: Bloom & Mayer, clothiers 26 to 30 S. Clinton
- 1904 City Directory: No listing for Bloom, no City Directory
Mayer, Max, prop good clothes store, 28-30 S. Clinton
- 1909 City Directory: Sarah Bloom (wid Moses) r 116 S Dodge
Max Mayer, clothier and furnisher "Max Mayer Clothing House", 28-30 S. Clinton
- 1911 City Directory: Max Mayer, Clothing House (clothier, furnisher & merchant tailor), 28-30 S. Clinton
- 1915 City Directory: Bloom-Mayer Clothing Co., 28 S. Clinton
Mrs. Julia B Mayer, Pres., Max Mayer, V.Pres., Robt. E Bloom, Sec-Treas.
Iowa Book Store, John T. Ries Proprietor, 30 S. Clinton

Iowa Site Inventory Form Continuation Sheet

Related District Number

Page 11

Ewers Men's Store	Johnson
Name of Property	County
28 S. Clinton Street	Iowa City
Address	City

Local snippets: *Iowa City Press Citizen*, 08/12/1915

“A.M. Ewers of Albia has leased the Furbish block, opposite the Johnson County Savings Bank for a shoe business.”

Advertisement: “A Little Shoe Talk,” *Iowa City Press Citizen*, 09/09/1915.

Ewers opening a new shoe store on 09/11 – no location noted.

Advertisement: *Iowa City Press Citizen*, 10/07/1915

A.M. Ewers & Co., Men’s & Women’s Shoes
101 S. Clinton Street ... the “Furbish Building”

1918 City Directory: No Bloom-Mayer (business or Robert E. Bloom); Max Mayer, postmaster
28 – Vacant
30 – Iowa Book Store

1919 City Directory: No Blooms
28 – HB Shiley Co.
30 – Iowa Book Store

“A.M. Ewers Buys Bloom Building,” *Iowa City Press Citizen*, 07/11/1919.

Sidney Bloom building on Clinton just north of Washington and now occupied by the Shiley Variety Store. For many years, occupied by Bloom-Mayer Clothing Store.
Building had a 20-foot frontage and 62-foot depth.

Legal Notice, *Iowa City Press Citizen*, 08/01/1919

Deed transfer from Sidney Bloom to A.M. Ewers, Part Lot 6 in Block 80, \$13,500

1920 Advertisement: *Iowa City Press Citizen*, 06/24/1920
A.M. Ewers & Co. at 101 S. Clinton

Advertisement: *Iowa City Press Citizen*, 12/01/1920
A.M. Ewers & Co. at 101 S. Clinton

1921 Advertisement: *Iowa City Press Citizen*, 02/05/1921
A.M. Ewers & Co. at 101 S. Clinton

“Ewers buys Drico Cash Grocery,” *Iowa City Press Citizen*, 09/09/1921.

Drico Cash Grocery was located at 105 S. Clinton, south of their store at 101 S. Clinton.

1922 City Directory: 28 – HB Shiley Co. and Iowa Typewriter Co.
30 – Ries Iowa Book Store
101 – A.M. Ewers & Co.
105 – A.M. Ewers & Co.
107 – LeRoy Spencer

1923 Advertisement: *Iowa City Press Citizen*, 03/07/1923

“Prices Slashed at Closing Out Sale” of the H.B. Shiley variety stock (28 S. Clinton).
Former Shiley building being remodeled for the Ewers shoe store

Iowa Site Inventory Form Continuation Sheet

Related District Number

Page 12

Ewers Men's Store	Johnson
Name of Property	County
28 S. Clinton Street	Iowa City
Address	City

Advertisement: *Iowa City Press Citizen*, 04/18/1923
"Announcement" new shoe store (A.M. Ewers & Co.) open on April 19 at 28 S. Clinton

Advertisement: *Iowa City Press Citizen*, 07/11/1923
"Closing Out Sale" Lease on the building at 101 S. Clinton (anecdotally referred to as "The Corner Store") expiring – all stock, including store tables and fixtures for sale

Advertisement: *Iowa City Press Citizen*, 08/07/1923
"Bargain Shoes"
Third floor (elevator access) of 28 S. Clinton open as bargain department –including "complete line of variety stock" which included cups, saucers, etc.

Advertisement: *Iowa City Press Citizen*, 11/22/1923
A.M. Ewers & Co.
1st Floor: Men's & Women's shoes
2nd Floor: Children's & Women's "High Shoes"
3rd Floor: Variety stock – toys, games, books, dishes, hosiery, etc.

1924 City Directory: 28 – A.M. Ewers & Co.
30 – Ries Iowa Book Store
101 – Student Supply Store
105 – Corey & Valentine
107 – Harmony Hall & LeRoy Spencer

1926 City Directory: 28 – A.M. Ewers & Co.
30 – Ries Iowa Book Store
101 – Vacant
105 – Corey & Valentine
107 – Harmony Hall & LeRoy Spencer

1928 City Directory: 28 – A.M. Ewers & Co.
30 – Ries Iowa Book Store
101 – John G. Fink
105 – Corey & Co.
107 – Harmony Hall & LeRoy Spencer

1930 City Directory: 28 – A.M. Ewers & Co.
30 – Ries Iowa Book Store
101 – John G. Fink
105 – Corey & Co.
107 – Vacant

1932 City Directory: 28 – A.M. Ewers & Co.
30 – Ries Iowa Book Store
101 – Economy Cash Grocery Store No. 1
105 – Home Grocery
107 – Fredk. Zitelman, upholstery

1934 City Directory: 28 – A.M. Ewers & Co.
30 – Ries Iowa Book Store
101 – Economy Cash Grocery No. 1

Iowa Site Inventory Form Continuation Sheet

Related District Number

Page 13

Ewers Men's Store	Johnson
Name of Property	County
28 S. Clinton Street	Iowa City
Address	City

105 – Ewers Economy Shoe Store
107 – Wm. Peterson, barber & Vogue Beauty Shop

1939 Advertisement: *Iowa City Press Citizen*, 07/28/1939
Ewers Economy Store
105 S. Clinton Street

1936 City Directory: 28 – A.M. Ewers & Co.
30 – Ries Iowa Book Store
101 – Economy Cash Grocery No. 1
105 – Ewers Economy Shoe Store
107 – Wm. Peterson, barber

1938 City Directory: 28 – A.M. Ewers & Co.
30 – Ries Iowa Book Store
101 – Economy Cash Grocery No. 1
105 – Ewers Economy Shoe Store
107 – Wm. Peterson, barber & Grace Armstrong, beauty shop

1940 City Directory: 28 – A.M. Ewers & Co.
30 – Ries Iowa Book Store
101 – Economy Cash Grocery No. 1
105 – Ewers Economy Shoe Store
107 – Wm. Peterson, barber & Cleonas Beauty Shop

1942 City Directory: 28 – A.M. Ewers & Co.
30 – Ries Iowa Book Store
101 – Economy Cash Grocery No. 1
105 – Ewers Economy Shoe Store
107 – Wm. Peterson, barber & Cleonas Beauty Shop

1943 City Directory: 28 – A.M. Ewers & Co.
30 – Ries Iowa Book Store
101 – Economy Cash Grocery No. 1
105 – Ewers Economy Shoe Store
107 – Wm. Peterson, barber & Cleonas Beauty Shop

1946 City Directory: 28 – A.M. Ewers & Co.
30 – Ries Iowa Book Store
101 – Economy Cash Grocery No. 1
105-107 – Ewers Economy Shoe Store

“Expand Shoe Store Here. New Double Front to Adorn Ewers Property on S. Clinton Street.”
Iowa City Press Citizen, 09/11/1946.

The property was located at 105-107 S. Clinton (formerly Drico Cash Grocery, which Ewers purchased in 1921 and operated as Ewers’ “Economy Store”). The former shoe store at 28 S. Clinton moved to this location, which was managed by Glen G. Ewers.

Iowa Site Inventory Form Continuation Sheet

Related District Number

Page 14

Ewers Men's Store	Johnson
Name of Property	County
28 S. Clinton Street	Iowa City
Address	City

1947 "Ewer's Footwear Shop Opens on Clinton Street," *Iowa City Press Citizen*, 02/25/1947.

The building at 105-107 S. Clinton was completely remodeled, inside and out, with a double-wide, 48-foot storefront sheathed in wine and beige Carrara glass. The former shoe store at 28 S. Clinton was remodeled as a men's apparel store.

1949 City Directory: 28 – Ewers Men's Store
30 – Ries Iowa Book Store
101 – Economy Cash Grocery No. 1
105-107 – Ewers Shoe Store

1954 City Directory: 28 – Ewers Men's Store
30 – Hawkeye Book Store
101 – Economy Cash Grocery No. 1
105-107 – Ewers Shoe Store

1960 Advertisement: *Iowa City Press Citizen*, 06/17/1960
Ewer's Footwear
105-107 S. Clinton Street

Advertisement: *Iowa City Press Citizen*, 06/30/1960
Ewer's Men's Store
28 S. Clinton Street

Iowa Department of Cultural Affairs
State Historical Society of Iowa
**Iowa Site Inventory Form
Continuation Sheet**

Site Number **52-01058**
Related District Number

Page 15

Ewers Men's Store
Name of Property
28 S. Clinton Street
Address

Johnson
County
Iowa City
City

11. Additional Documentation

Legal Description: beg. 20' south of NW cor. of Lot 6, east 62'4", south 20.43', west 62'4", north 20.43'

Assessor: PIN 1010311022

Lat/Long: 41.660620/-91.534355

Parcel Map – 2017

